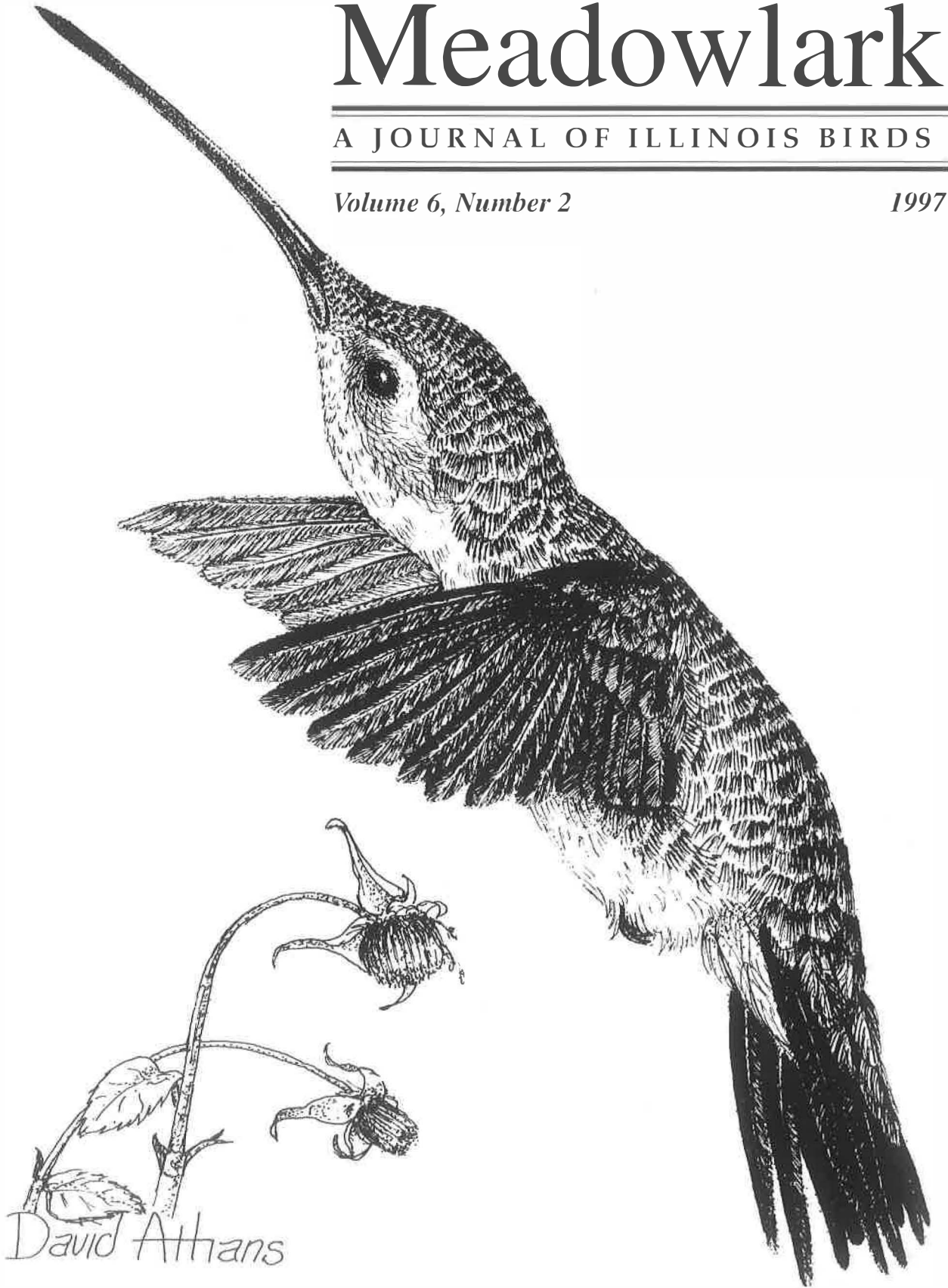


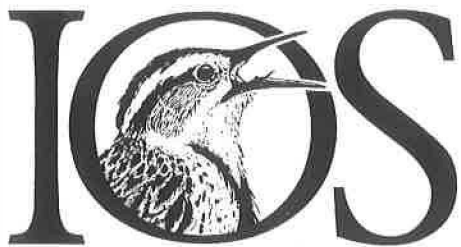
Meadowlark

A JOURNAL OF ILLINOIS BIRDS

Volume 6, Number 2

1997





Illinois Ornithological Society

Publisher

Illinois Ornithological Society

Robert Montgomery, President

Sheryl De Vore, Chief Editor

Renee Baade, Vice-President

Michael Hogg, Treasurer

Board of Directors

Renee Baade

Steve Bailey

Mary Hennen

Michael Hogg

David B. Johnson

Robert Montgomery

Joe Suchecki

Eric Walters

Geoff Williamson

Recording Secretary

Denis Bohm

Associate Editors

David B. Johnson

Peter Lowther

Christine Williamson

Art Editor

Denis Kania

Staff Photographers

Joe B. Milosevich, Dennis Oehmke

Staff Illustrators

David Athans, Brian K. Willis

Pre-Press Production

Kathy Ade

Printing

CityWide Printing

DesPlaines, Illinois

Membership Secretary

Joan Palinscar

Editorial Advisory Board

Laurence C. Binford

Dale Birkenholz

H. David Bohlen

Kenneth J. Brock, Victoria Byre

Robert T. Chapel

Mary Hennen, Scott Hickman

L. Barrie Hunt

Vernon M. Kleen

Scott K. Robinson

W. Douglas Robinson

Robert Szafoni, David Willard

Letter from the editor

We need your breeding bird survey reports!

Sometime in August or September, I begin my yearly ritual of writing a breeding bird survey report. I've been doing these surveys as a consultant for about five years for the Lake County Forest Preserve District. And while it's a tedious task, I feel a sense of accomplishment that I am recording data that could be useful to not only the forest preserve district, but also future ornithologists.

I know that many of you out there are doing the same.

For instance, our photographer Joe Milosevich has told me about surveys he did last year in the Joliet area. And our associate editor David B. Johnson has done some breeding bird survey work for the Wetlands Research Institute in Lake County. He found breeding Yellow-billed and Black-billed Cuckoos!

Why am I mentioning all this? Because these reports, while kept in files with the organization or company that scheduled the study, should also be published in *Meadowlark*.

We need to document in written format the breeding successes of birds in Illinois as a framework for future research and a link to past research. If you've already done all the transect work and report-writing for breeding birds in an area in Illinois, then you have a framework in which to write an article for *Meadowlark*. Perhaps all we need to do is make some minor changes before publishing your report.

Think of someone doing research ten years from now on the area you surveyed. What a benefit it would be if they could read your report in *Meadowlark* for comparison purposes. One thing I'd like to do is examine the breeding bird survey reports from the Lake County Forest Preserve District files for the past ten years. I did that when I surveyed Ryerson Woods two years ago and found that Veeries were considered common breeders there ten years ago. But I only found three breeding pairs in the entire preserve the year I did the survey. This is significant information.

I started the ball rolling by publishing that Ryerson report in Vol. 5 No. 2. Now is your chance to add to the breeding bird data you've been carefully collecting in your neck of the woods.

The readers surveys you returned indicated you want more information about birds in Illinois. Here's your chance to provide that information. Share your reports with us - and with the future scientists who will find them more easily in *Meadowlark* through our annual Index, than by wading through reams of files at various organizations and corporations statewide.

If you want help getting started, please contact me at (847) 566-4846; 967 Braeburn Road, Mundelein, IL 60060, or E-mail me at: sdevore@ais.net.

Sheryl De Vore

MEADOWLARK

A Journal of Illinois Birds

Volume 6, Number 2 - 1997

ISSN 1065-2043

President's Message

If you were unable to attend our annual meeting in April, you missed a fine time. Though the birding was slow considering the cold spring we had, we still enjoyed some excellent presentations and wonderful walks through woods, wetlands, and grasslands. The Upland Sandpipers and Henslow's Sparrows were just returning, and the wildflowers were blooming profusely. We also enjoyed seeing old friends and making new ones.

As we enter our sixth year, I look forward to working with our new board and you, our members. I must thank our retiring directors, Richard Blewett, Judy DeNeal, and Jean Lesniak.

These individuals made major contributions to IOS and will be missed.

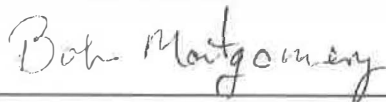
Elected to replace these hard-working directors are Mary Hennen, Steve Bailey, and Geoffrey Williamson. Mary, as you know, works with Peregrine Falcons and Eastern Bluebirds at the Chicago Academy of Sciences. Steve lives in Champaign and is a researcher with the Illinois Natural History Survey. Geoff is an active field trip leader and co-editor of the Chicago Ornithological Society's newsletter. Also joining the board is Joe Suchecki, who filled a vacancy. Joe is an active member of the DuPage Birding Club.

We are happy to have them on board.

IOS now has more than 700 members. Your board needs your help. Let us hear from you - what you like and what you don't like. Volunteer your time and talent. And mark the weekend of 19-21 June 1998 on your calendar for our next annual meeting at Starved Rock State Park near Utica.

I look forward to seeing you all there or on one of our field trips.

Until next time,



Articles

Broad-billed Hummingbird: 42
An Unlikely New Addition to the Illinois List

—H. David Bohlen

WOW! What a Day! 45

One of Illinois' best birders adds three new state species to his list in a single day!

—Vernon M. Kleen

Illinois Hosts of the Brown-headed Cowbird 47

— Peter E. Lowther

Avian Counterpoint

Comments on the Parentage of a Hybrid Goose 58

— R.A. Montgomery

Reply to Montgomery 60

— Nancy Bent

Departments

Seasonal Highlights/Fall Migration 1996 62

Field Notes/Fall Migration 1996 66

—Robert Chapel

About Our Cover:

The Broad-billed Hummingbird was added as a new species to the Illinois list. An article begins on page 42. Cover drawing by staff illustrator David Athans.

Copyright© by the Illinois Ornithological Society. No part of this journal may be reproduced without the written permission of IOS and the chief editor, except brief passages of a paragraph or less in which attribution is made to the journal and author.

Broad-billed Hummingbird:

An Unlikely New Addition to the Illinois List

By H. David Bohlen

On 7 November 1996 Myrna Deaton, Dan Kassebaum, Vernon Kleen, and I drove to western Peoria County to identify a hummingbird attending a feeder. Kleen had received information about an unusual hummingbird there, but we had no other details. We speculated that it was probably a late Ruby-throated Hummingbird (*Archilocus colubris*) or at most a Rufous Hummingbird (*Selasphorus rufus*). Shortly after sunrise on a rather cold day we drove to

the western part of the small town of Trivoli where we found the only wooded edge. The house with the feeder was on the south side of Route 116 and the feeder was on the home's south side. The feeder's owner, and our host, was Viola Gronewold.

Soon after we had set up our scopes, the hummingbird flew in. It looked large for a Ruby-throat and we noted the obvious orange on the lower mandible. We observed the

bird dart in and out of the feeding area a few times and sit in a bare tree, noticing the dark face patch with white line behind it and the bluish-green central tail feathers. Kassebaum opened the National Geographic Field Guide and together we eliminated everything except a female Broad-billed Hummingbird (*Cynanthus latirostris*). Even equally unlikely candidates like White-eared Hummingbird (*Hylocaris lucotis*) did not fit. We were astounded!



Broad-billed Hummingbird, First State Record, Trivoli, Peoria Co. 9 Nov. 1996. Photos by Dennis Oehmke.



Broad-billed Hummingbird, First State Record, Trivoli, Peoria Co. 9 Nov. 1996. Photo by Dennis Oehmke.

We had not obtained a good look at the tail, so we put up the mist net that Kleen brought. The hummingbird eluded the net several times, so we readjusted the net position. The bird flew up to the net, hesitated, and finally flew in. Once in the hand, Kleen took several measurements and Deaton took photographs of different angles. The outer left tail feather was then plucked and deposited in the Illinois State Museum (collection # 660432). In the hand, the thick band of blue in the tail indicated this was indeed a rare hummingbird.

After checking the literature, the only other species similar to the Broad-billed is the closely related Dusky Hummingbird (*Cynanthus sordidus*), which is endemic to southwest Mexico (see Howell and Webb 1995). This species is duller on the back and on the central tail feathers than the Broad-billed.

The following account was taken from my field notes, Deaton's photographs of the bird in the hand, and Dennis Oehmke's photographs of the bird in the field on 14 November 1996. At first observation, the hummingbird looked larger than a Ruby-throat, but the actual over all length was not determined. The bill formed a slight but noticeable arch and looked long (from the forehead it

was 23 mm). The bill was flattened somewhat in the area around the nostrils (width at base 4 mm), and there was a bit of orange color around the nostrils in the otherwise brown upper mandible. The lower mandible was mostly orange; the distal quarter was dark. The forehead to about the crown was grayish (measurement was 13 mm). The hind crown, nape, neck sides, back, upper tail coverts, wing coverts, and sides were bronzy green. The eye was dark. The mouth lining was orange. There was a dark area (3.5 mm widest part of blackish eye stripe) below the eye

(auriculars) that was gray black. Behind the eye was a posterior white line running alongside the blackish auriculars. This white sometimes appeared as just a white spot behind the eye, turning gray above the eye.

The underparts were gray, except around the legs, where they were fairly bright white. These sometimes appeared as little puffs of white in the gray. The undertail coverts were gray. The tarsi were dark brown. The wing length was 56 mm. The wings looked black to dark gray. When the bird perched, occasionally some white feathers (from the flanks?) showed over the wing tops. The dorsal central tail feathers were bluish-green. This character was seen on the closed tail. The tail length was 30 mm. From above, the remainder of the tail on the upper half was greenish fading to gray. The lower half was blue with white on the three outer tail feathers. The white on the outer tail feather from the vane measured 7 mm. There was much less white on the next inner

tail feather and the third feather had just small white spots on the tip. From underneath, there was a nice broad band of blue along the bottom of the tail with the white spots noted above (See Figure 1).

The hummingbird gave a Ruby-crowned Kinglet-like call, a short series of chips. It also occasionally uttered a single note. This southwestern hummingbird endured temperatures as low as 15° F on 14 November 1996, with an average low for the first 23 days of November of 28.7°F and an average high of 42.1°F (Peoria airport

temperatures).

Most active Illinois birders observed the bird as it regularly visited the Gronewold feeder. It sat in the trellis or flew to the south edge of the yard near woods. Sometimes the bird

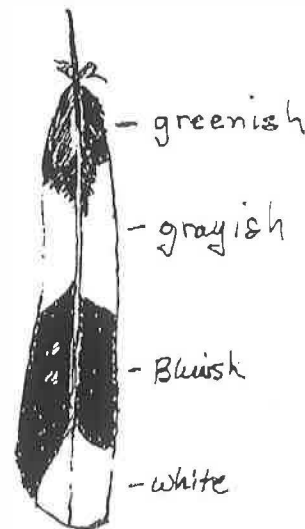
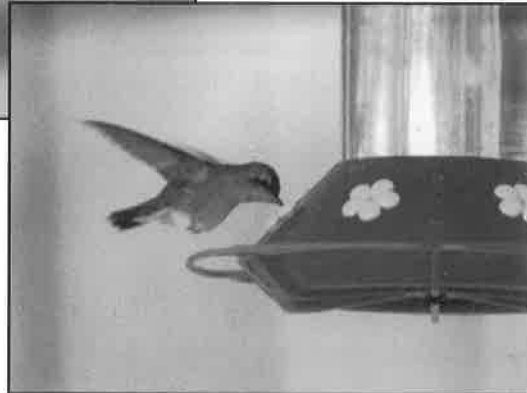
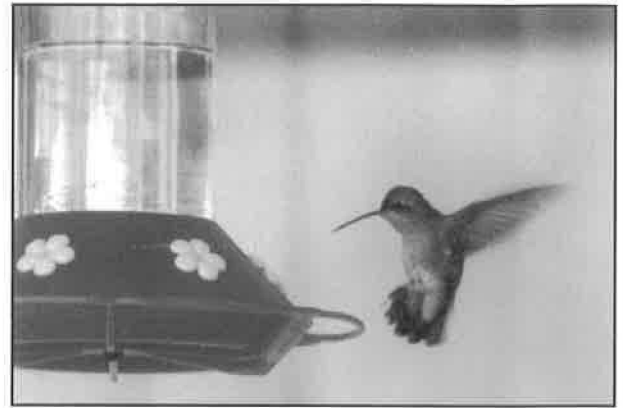
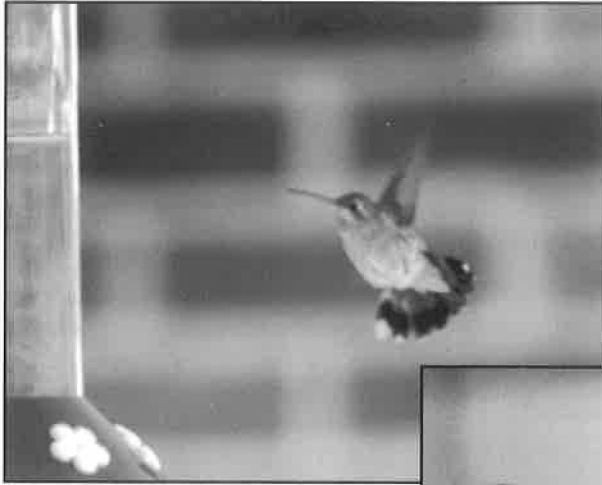


Figure 1: Left outer tail feather, ventral side from Broad-billed Hummingbird. (3x)

Broad-billed Hummingbird, First State Record, Trivoli, Peoria Co. 9 Nov. 1996. Photo by Dennis Oehlme.



Broad-billed Hummingbird, First State Record, Trivoli, Peoria Co. 22 Nov. 1996. Photos by Joe B. Milosevich.

hovered at the feeder and other times it sat and fed. The Broad-billed Hummingbird was last seen at 11 a.m. on 23 November 1996.

In its native range, the Broad-billed Hummingbird prefers open areas such as arid scrub, deciduous forest, and semi-desert. The Illinois bird was in an open area with woodland edge. The AOU check-list (1983) says the breeding range is from W. Sonora, S.E. Arizona, S.W. New Mexico, N. Chihuahua, W. Texas, and Tamaulipas south through Mexico to Oaxaca and Chiapas and east to N. Veracruz, Hidalgo, and Pueblo. Even in Arizona and New Mexico where it breeds, there are areas, especially north, in which this species is considered a vagrant.

In other southwestern states such as California, Utah (four records), Nevada (two records), and Texas, the Broad-billed Hummingbird is considered very rare with heavily birded California having the most records, nearly all of which are along the coast. Texas reportedly has 24 records. In the east, Louisiana has the most extralimital records, with five, all since 1992. There is one from South Carolina, Seneca, 30 July 1985 (AB40:99), one from Ontario, Peterborough County, 16-27 October 1989 (Carpentier 1990), and a recent record from Michigan, an adult in Lac LaBelle, May 31-June 7, 1996, (Jim Granlund pers. comm.). The AOU checklist gives an accidental record from Pensacola, Florida (details of which I could not find in the literature).

Identity of these vagrant hummingbirds is often

difficult or impossible. Whenever feasible and only if done by a licensed bander, late (past mid-October) hummingbirds should be captured in mist nets and photographed to ensure accurate identification. If done properly and if the bird is released after a short time, there should be no harm. After we released the Peoria County Broad-billed Hummingbird, it attended the feeder for another two weeks.

Literature Cited

American Ornithologist's Union. 1983. Check-list of North American Birds. 6th ed. Lawrence, Kansas: Allen Press. 877 pp.

Carpentier, Geoffrey. 1990. Broad-billed Hummingbird: New to Ontario and Canada. *The Journal of the Ontario Field Ornithologists*. Volume 8 (1): 347.

Howell, N.G. and S. Webb. 1995. *A Guide to the Birds of Mexico and Northern Central America*. Oxford University Press. 851 pp.

Le Grand, H.E. Jr. 1986. Southern Atlantic Coast Region. *American Birds*: 40(1):99.

—H. David Bohlen
Assistant Curator of Zoology
Illinois State Museum Research & Collections Center
1011 East Ash Street
Springfield, Illinois 62703

WOW! What A Day!

One of Illinois' best birders
adds three new state species to his list in a single day!

By Vernon M. Kleen

Thursday, 7 November 1996, was to be a day of field observations along the Mississippi River below the Quad Cities, however, a phone call early Wednesday was challenging enough to modify the schedule.

The call came from Michelle Simone, the Department of Natural Resource's District 5 Heritage Biologist in the Pekin office. Simone had just heard from Mrs. Viola Gronewold of Trivoli (in western Peoria County) who wanted to know if she should continue feeding the hummingbird that was still coming to her feeder. Gronewold knew that hummingbirds should have migrated south by November and was concerned that her feeding had kept this bird from doing what it was supposed to do. Temperatures had already dipped into the low 20s a few days earlier, so, why was this hummingbird still here?

Knowing that hummingbirds in late fall may be species other than the traditional Ruby-throated, I called Gronewold and recommended she continue feeding the bird as long as it stayed—no matter how cold it got. Of course, I also asked if several of us could stop by very early the next morning to determine if she had an unusual hummingbird. Gronewold graciously agreed, giving excellent directions to her home as well as offering advice on how we could best see the feeder near the window on the back patio.

H. David Bohlen and Myrna Deaton, co-members of the Illinois Ornithological Records Committee,

agreed to meet me at Williamsville at 6 a.m. Dan Kassebaum from Belleville also joined us.

It was 35 degrees and drizzling. The weather forecast for the rest of the day was gloomy - certainly not an ideal birding day. But we were on a mission.

Perhaps it was luck (Luck Number 1), that as we reached Peoria shortly after 7 a.m., the drizzle stopped never to return that day. We arrived at the Gronewold house about 7:30 a.m. and set up scopes on the southwest side. In just 15 minutes the hummingbird appeared. It was drab and different from what any of us had anticipated. Several features eliminated Ruby-throated as well as other projected possibilities such as Rufous Hummingbird.

Even though the bird sat still at close range for considerable time, it was difficult to pin down exact plumage and other details, so, we got Gronewold's permission to set up a mist net to capture the bird, and, called Louise Augustine (who was expecting our call) to join us with more detailed hummingbird information.

The net, where originally placed, was quite visible and the hummingbird went around and over it several times. We moved the net so that it stretched directly across the patio in front of the feeder. The hummingbird hovered in front of the net, moved to one side and finally flew into it (Luck Number 2). We quickly and carefully retrieved the hummingbird

from the net, took several measurements, photographed the bird, and collected one outer tail feather. On close-up evaluation we presumed the bird to be a female Broad-billed Hummingbird (a first Illinois record), then, solidified our decision with the support literature Augustine provided.

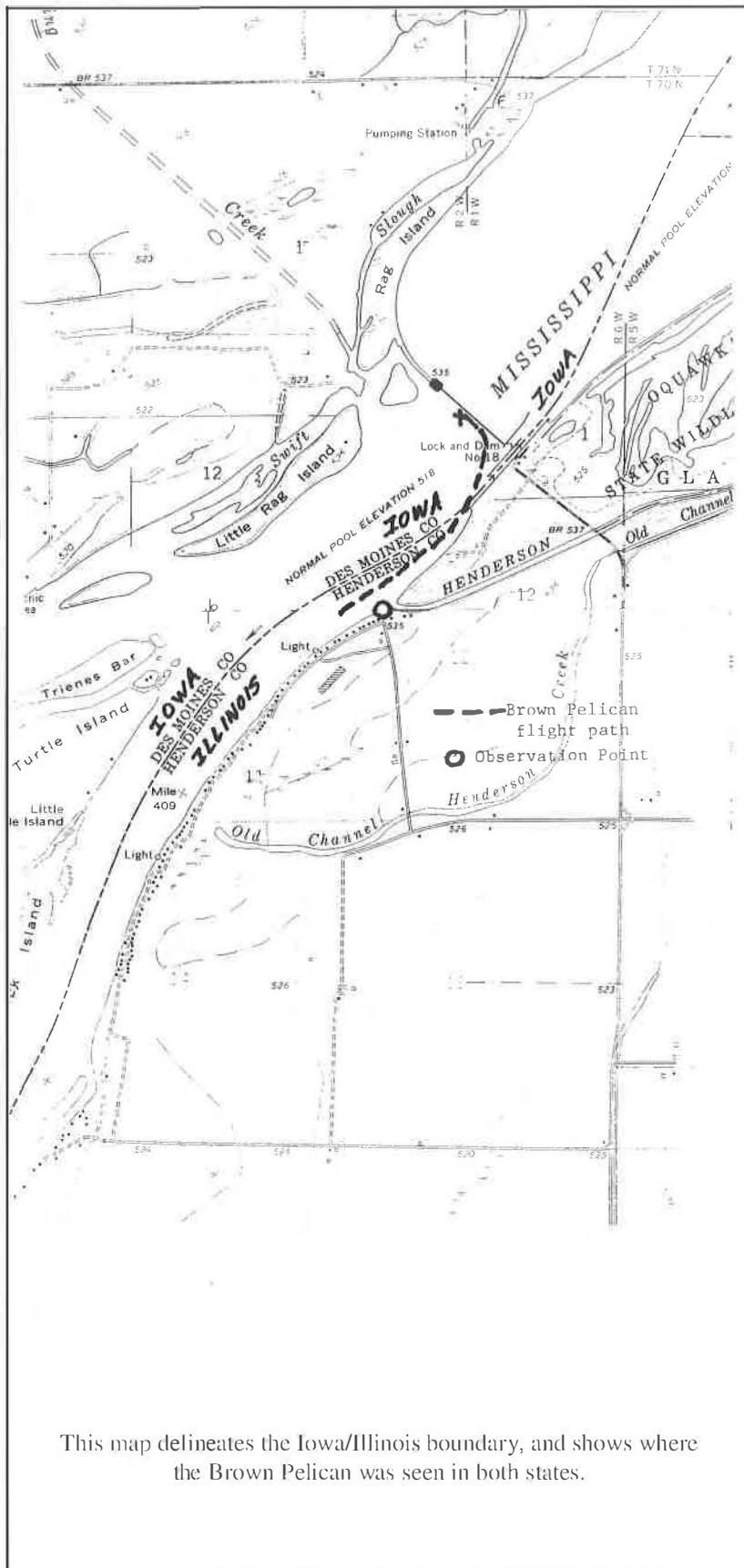
On pronouncement to Mrs. Gronewold that she was feeding a bird that had not been previously reported in Illinois and that a hundred or more birders from all over the state would like to see it, we asked her if she would have any problems continuing to feed the bird and "entertaining" a large number of visitors. Once again, she was a gracious hostess and agreed as long as the visitors did not block her driveway. As we departed about 10 a.m., Augustine, with Tom Pucelik, released the bird.

WOW! What a Day!

However, it was only beginning...

From Trivoli we headed to Lock & Dam 18 on the Mississippi River near Gladstone. We had heard that a Brown Pelican was there earlier in the week. We arrived about 11:30 a.m. and searched for the bird for an hour. We did see a Common Loon, an American White Pelican, and a Black Scoter below the dam, and 60 American White Pelicans, a Western Grebe, and lots of diving ducks above the dam. But no Brown Pelican.

We then realized that, on review of the state boundary lines, that **everything present** both above and below the Dam was **exclusively** in Iowa,



This map delineates the Iowa/Illinois boundary, and shows where the Brown Pelican was seen in both states.

and, therefore, we (nor anyone else) could count (with conscience) any of those birds for Illinois (see map). It's a good thing for us the Brown Pelican wasn't at the Lock & Dam at that time (Luck Number 3). Having failed there, we left about 12:30 p.m. and found another access to the river and a Cattle Egret about a mile down river from the dam. Luck Number 4 arrived - the Brown Pelican flew up river, directly in front of us (in Illinois), and continued up to the Lock & Dam (in Iowa) and settled on the river (in Iowa). From this same vantage point we also relocated the Black Scoter, which was definitely in the Illinois portion of the river (Luck Number 5).

We finally left the Gladstone area around 1:30 p.m. after I had added my third new state species in **one** day (the Black Scoter had remained elusive all these years); not bad when I consider it successful to add just one new species per year. Deaton and Kassebaum added two new species to their state lists.

We still had several hours of daylight left and we couldn't go by Lake Chautauqua Wildlife Refuge without stopping. Here we found 150 more white pelicans, 7 Tundra Swans, an American Avocet, and 150 Common Snipe amongst the hundreds of ducks, before the sun finally went down leaving us to ponder the incredible day.

— Vernon M. Kleen
R.R. #2, Box 481
Athens, IL 62613

Illinois Hosts of the Brown-headed Cowbird

By Peter E. Lowther

Brown-headed Cowbirds (*Molothrus ater*) are wide-ranging brood parasites of North America. Cowbirds have received much attention because of their breeding biology and interaction with host species. Over 220 species have been reported as being parasitized by the Brown-headed Cowbird, and 144 species are known to have actually reared cowbird young (Friedmann and Kiff 1985, Lowther 1993). Cowbird abundance is greatest in the Great Plains — from Kansas to North Dakota — with high densities also extending eastward through the Midwest (Mayfield 1965, Price et al. 1995). In Illinois, cowbirds are common statewide in the current variety of agricultural habitats including crop fields, meadows, pastures, and woodlots.

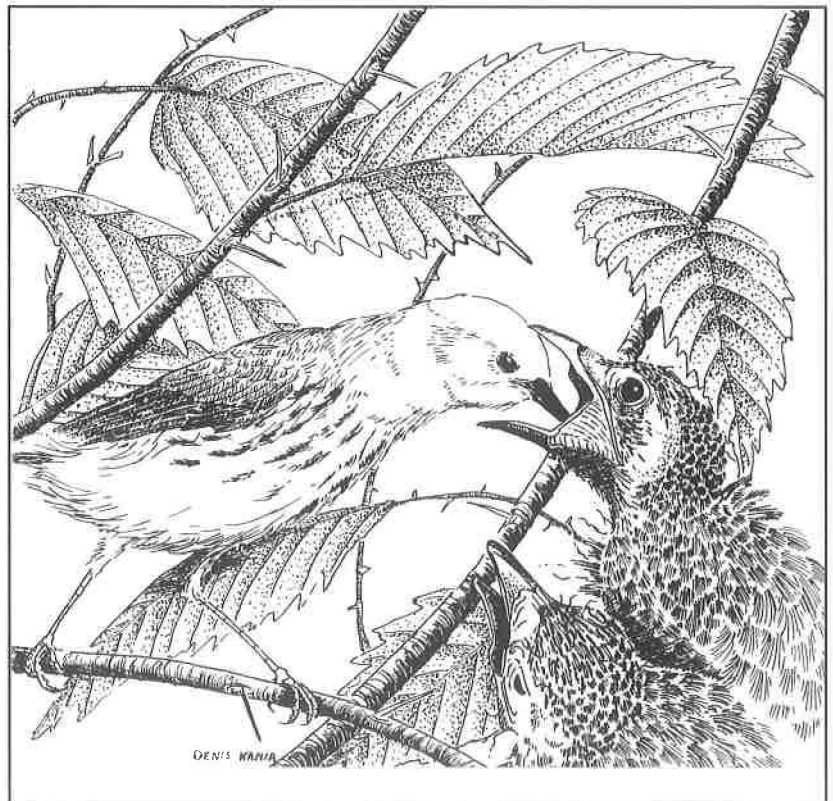
In this present account, I provide a list of 73 species (plus 1 more possible) that have been recorded as cowbird victims or hosts in Illinois. The host tabulations of Friedmann (Friedmann 1929, 1963, Friedmann et al. 1977, Friedmann and Kiff 1985) provided my starting point. In addition, I looked through older local and regional journals to find mention of "Illinois" and "cowbird" together. I have also made use of a database of museum egg sets which include cowbird eggs (L. F. Kiff and P. E. Lowther, unpubl.).

Yellow Warblers are frequent hosts to Brown-headed Cowbird eggs. Drawing of Yellow Warbler feeding a cowbird young by Denis Kania.

Past surveys of cowbird parasitism in Illinois.

— H. Nehrling (1880-85) presented an account of his bird observations from northern Illinois and listed 16 species as cowbird hosts: Wood Thrush, 4 warblers, 4 vireos, 3 sparrows, 3 flycatchers, and 1 tanager. R. M. Barnes (1890), egg collector and long time editor of *Oologist*, listed 8 cowbird hosts among the breeding birds of Marshall County. Poling (1889) found about 43 nests of 18 species parasitized near Quincy: most common were Eastern Towhee (about 12 nests), Chipping Sparrow (6 nests), and Red-eyed Vireo (4 sets).

Blocher (1936) provided a list of 22 host species; most commonly parasitized were Northern Cardinal (16 of 19 nests parasitized), Wood Thrush ("every set [of an unknown total] parasitized"), Eastern Towhee (only 1 nest not parasitized of unknown total), Field Sparrow (11 of 14 nests), Eastern Phoebe (about half of nests parasitized of unknown total). In his book on Illinois birds, Bohlen (1989) listed 61 host species which seem to have been obtained from the several host compilations of Friedmann (Friedmann 1929, 1963, Friedmann et al. 1977, Friedmann and Kiff 1985).



Current studies.

— Current studies on cowbirds in and near Illinois by Scott Robinson and the Illinois Natural History Survey have looked at the effects of habitat fragmentation on susceptibility of forest species to “new” cowbird pressure (e.g., Robinson et al 1995a, 1995b, 1996). Robinson’s studies, while examining this situation, have also acquired much information on rates and intensity of cowbird parasitism on many woodland species. Results from these studies are just beginning to be published (e.g., Robinson 1992, Koford et al., in press, Robertson et al., in press, Thompson et al., in press). Bill M. Strausberger has done extensive work (as yet unpublished) on cowbirds at Morton Arboretum, DuPage County, from 1994 to 1996. Other recent works include that of Thompson (1994) who examined habitat use and daily movements of radio-tracked cowbirds.

Common hosts.

— Friedmann (1963) gave a ranking of hosts by number of accumulated parasitism records; the 50 species with 25 or more records accounted for 7,800 of about 9,000 records he had accumulated. The top 17 species (with over 100 records each) include, in order: Yellow Warbler, Song Sparrow, Red-eyed Vireo, Chipping Sparrow, Eastern Phoebe, Eastern Towhee, Ovenbird, Common Yellowthroat, American Redstart, Indigo Bunting, Yellow-breasted Chat, Red-winged Blackbird, Kentucky Warbler, Willow [“Traill’s”] Flycatcher, Bell’s Vireo, Yellow-throated Vireo, and Field Sparrow. These 17 species are all known to be parasitized in Illinois. For the most part, this list includes widespread and common species and shows an eastern North American bias due to distribution of observers and egg collectors earlier in this century. This ranking is not a result of random

sampling efforts and represents neither rates of parasitism nor importance of host species.

Cowbird impact on host species’ populations depends on how distribution and abundance patterns of both host and cowbird match. Red-winged Blackbird (only 180 records in Friedmann’s list), likely North America’s most common bird and widely co-occurring with cowbirds, is an important cowbird host though sheer numbers of parasitism rates may be low; a 1% parasitism rate for Illinois alone would mean over 50,000 records of parasitism annually (given an estimate of over 5,000,000 Red-winged Blackbirds in the state; Graber and Graber 1963). At the other extreme, Kirtland’s Warbler

(with 80 Friedmann records) produces few cowbirds, although its own existence is actually threatened by brood parasitism; see also the account below for Solitary Vireo.

What hosts maintain Brown-headed Cowbird populations in Illinois? A simple arithmetic model may give some insight into the mechanism of population regulation as well as demonstrate the complexity of what must really happen. Given the crude estimate of 1.5 million cowbirds in Illinois (1.8 million cowbirds estimated in 1909 and 1.13 million in 1957; Graber and Graber 1963) and an estimate of adult survival at 40% (Scott and Ankney 1980), annual recruitment must be 900,000 birds in order to maintain a stable population.

Account Format.

I use the following format to present information on cowbird parasitism in Illinois. The following information may be included for each host species: (1) Categorization as either “victim” or “host”. Victim is defined as those species that have been only recorded as receiving cowbird eggs and host as those species that had been parasitized and have reared cowbird young. (2) Brief statement of abundance and preferred habitat in Illinois (summarized from Bohlen 1989). (3) Quantitative measure of abundance based on Breeding Bird Survey (BBS; Robbins et al. 1986) and/or state-wide population estimates from Graber and Graber (1963; G&G) for 1909 and 1957 or 1957 only. BBS serves to index population numbers on a continental basis and reflects biases inherent in its method (see Erskine 1978:26-30,57). Graber and Graber (1963) used data of systematic censuses throughout the state to extrapolate an estimate of total state numbers. (4) Summary of studies

with quantitative information about parasitism. (5) Details for “unusual” instances of cowbird parasitism (i.e., seldom used host or large number of cowbird eggs). Nest content information is given in the form “number of host eggs + number of cowbird eggs” (e.g., 2 + 3). (6) List of references with incidental mention of cowbird parasitism (“REF” serves as a header). (7) Summary of museum egg sets including cowbird eggs (following “SETS”); museum acronyms are listed in the acknowledgments.

Host response to cowbird parasitism may be to accept the egg or to reject it. Rejection of cowbird parasitism may be by deserting the nesting attempt, burying the cowbird egg in the nest lining, or rejecting the egg (Friedmann 1963). Egg ejection may result in underestimating actual rates of cowbird imposition (Rothstein 1975).

See appendix for listing of additional victim and host species which nest in Illinois, but have not been recorded as being parasitized in Illinois.

Cowbird survival, from laying to first breeding season, has been estimated at about 2.6% (or 38.5 eggs to produce 1 yearling; Scott and Ankney 1980, Lowther 1993). This means that about 31.5 million eggs would need to have been laid in host nests. Female cowbirds likely lay 20 to 30 eggs per season (Jackson and Roby 1992, Holford and Roby 1993); one captive bird laid 77 eggs when 2 years old (Holford and Roby 1993). Is this level of parasitism reasonable? How do the common hosts, at "usual" rates of parasitism, contribute to this number?

Can Illinois hosts accommodate 31.5 million cowbird eggs? Table I (page

53) gives Graber and Graber's (1963) estimates of host population sizes along with guesses of rates of cowbird parasitism for common hosts. In Illinois, 16 "common" hosts number about 21 million pairs; this number X 2 nestings X 20% parasitism X 1.5 cowbird eggs/nest, accounts for about 12.6 million cowbird eggs.



The Wood Thrush is a frequent host of cowbird eggs. This nest photographed by Todd Fink on 4 June 1991 in Union County has two cowbird eggs and three thrush eggs.

Host List.

• **Yellow-billed Cuckoo**, *Coccyzus americanus* — Victim. Common in woodland, edge, and open woods. BBS: 4.5. REF: Friedmann 1963.

• **Eastern Wood-Pewee**, *Contopus virens* — Host. Common in woods. BBS: 2.4. G.K. (1894) reported a nest with 3 + 4 eggs. REF: Friedmann 1929, 1963; Green 1917; Nehring (1880-85); Robinson 1992; Thompson and Robinson 1963; Trine et al., in press.

• **Acadian Flycatcher**, *Empidonax virens* — Host. Common in bottomland interior forests. BBS: 0.4. REF: Bendire 1895; Friedmann 1929, 1963, Friedmann et al. 1977; Graber et al 1974; Robinson 1992; Robinson and Wilcove 1994; Robinson et al 1995b; Trine et al., in press. SETS: 2 (FMNH and ISM).

• **Willow Flycatcher**, *Empidonax traillii* — Host. Common in scrubby or brushy areas. BBS: 0.6. REF: Friedmann 1929, 1963; Friedmann et al. 1977; Graber et al. 1974; Pohling 1889.

• **Least Flycatcher**, *Empidonax minimus* — Victim. Uncommon in edges and interiors of forests. BBS: 0.1. REF: Nehring 1880-85; SETS: 1 from ChAS.

• **Eastern Phoebe**, *Sayornis phoebe* — Host. Uncommon on forest edges. BBS: 0.8. Nest with 4 + 3 eggs (Blocher 1936). REF: Blocher 1921, 1924, 1937; Breneman 1980; Friedmann 1963, Friedmann et al. 1977; Goelitz 1915a; Graber et al 1974; Musselman 1918; Nehring 1880-85; Poling 1889. SETS: 10 (WVZ, MVZ, UArk, FMNH, ChAS).

This model gives crude representation of cowbird-host interactions; manipulation of estimates, however, gives insight into complexity of reality. Each 1% change in parasitism rate on this pool of host species represents 200,000 cowbird eggs; each 0.1% increase (or decrease) in survival — from egg to breeding — means that about 1.26 million fewer (or more) cowbird eggs need be laid to maintain a stable population; each 10% change in total host population size could account for 1.26 million potential cowbird eggs (if parasitism rates remains constant). These simplistic relationships only hint at reality.

• **Great Crested Flycatcher**, *Myiarchus crinitus* — Victim. Common in upland and bottomland woods. BBS: 2.3. REF: Blocher 1936; Friedmann 1963.

• **Eastern Kingbird**, *Tyrannus tyrannus* — Host. Common in pastures and open areas. Kingbirds are known to eject cowbird eggs (Rothstein 1975). BBS: 4.0. G&G: 650,000 — 300,000.

REF: Friedmann et al. 1977; Graber et al 1974.

• **Horned Lark**, *Eremophila alpestris* — Host. Common of open country with short vegetation. BBS: 37.9. G&G: 840,000 — 5,600,000. REF: Friedmann 1929, 1963; Pickwell 1931 [Barnes set]. SETS: 4 (FMNH, ChAS).

• **Bank Swallow**, *Riparia riparia* — Victim. Locally common, associated with banks suitable for nesting. P. Clyne reported cowbird parasitism at a swallow colony in Jackson Park, Chicago, Cook Co. (Kleen 1995). BBS: 0.9. REF: Friedmann 1929, 1963 [Barnes set].

Host List, continued

• **Cliff Swallow, *Hirundo pyrrhonota*** — Victim. Rare in open areas. G. L. Toppan reported parasitism of this species (Poling 1890).

• **Blue Jay, *Cyanocitta cristata*** — Common in forested and residential areas. BBS: 9.9. G&G: 1,600,000 — 460,000. Jays are known to eject foreign eggs (Rothstein 1975). REF: Blocher 1933, 1936; Friedmann 1963.

• **Black-capped Chickadee, *Parus atricapillus*** — Host. Common in woodlands. BBS: 1.0. G&G: 150,000. Goelitz (1915a) made reference to a record of parasitism of Carolina Chickadee (*Parus carolinensis*) at Ravina, Lake Co., but, geographically, this record almost certainly refers to the Black-capped Chickadee (Friedmann 1963). Carolina Chickadees are the chickadee of southern Illinois and have been reported, rarely, as cowbird victims elsewhere (Friedmann 1963). REF: Blocher 1936; Friedmann 1929.

• **Tufted Titmouse, *Parus bicolor*** — Victim. Common in woodlands. BBS: 3.7. G&G: 750,000. Set taken 1 May 1915 in Piatt Co. with 7 + 1 eggs; and another set with 3 + 2 taken the next day (Goelitz 1915a, 1915b). REF: Friedmann 1929, 1963. SETS: 1 from ChAS.

• **White-breasted Nuthatch, *Sitta carolinensis*** — Victim. Common in woodlands. BBS: 0.4. REF: Friedmann 1963.

• **Carolina Wren, *Thryothorus ludovicianus*** — Host. Common in woodlands. BBS: 1.4. A recent study found 3 of 25 nests parasitized (Trine et al., in press).

• **Blue-gray Gnatcatcher, *Po-lioptila caerulea*** — Host. Common in forests. BBS: 0.3. REF: Friedmann 1963.

• **Eastern Bluebird, *Sialia sialis*** — Victim. Common in pastures and open areas. BBS: 2.0. G&G: 600,000 — 220,000. Cowbirds parasitized 7 (of 268) boxes on bluebird trail route near Quincy one year; these boxes

had no tops and cowbirds entered the top; nestboxes with side entrances (only) were not parasitized (Musselman 1946b). One of 17 nests parasitized in Du Page Co. (B. M. Strausberger, unpubl.). Set with 5 + 3 eggs taken 6 May 1922 in Lee Co. (Blocher 1926); another apparent reference to this same set (Blocher 1924), gave different numbers. REF: Friedmann 1963; Friedmann et al. 1977; Friedmann and Kiff 1985; Musselman 1946a. SETS: 3 (WFVZ, CaAS, SBM).

• **Veery, *Catharus fuscescens*** — Host. Occasional in northern Illinois woodlands. BBS: +. Nest found with 3 + 7 eggs (Pratt 1890). REF: M. Easterday in Kleen 1985, J. Milosevich in Kleen 1986, Friedmann 1929, 1963; Graber and Graber 1973; Thompson 1958. SETS: 2 in ChAS.

• **Wood Thrush, *Hylocichla mustelina*** — Host. Common in woods. BBS: 1.1. Wood Thrush nests are frequently reported with large numbers of cowbird eggs; Blocher (1936) found nests with 0 + 7 and 2 + 5 eggs; Robinson discovered an active thrush nest with 11 cowbird eggs from which 1 cowbird hatched (Kleen 1986; Robinson 1987). Of 6 nests monitored in Champaign Co., 3 nests contained single cowbird eggs, 1 cowbird young was reared (Twomey 1945). For 15 nests monitored near Shelbyville in 1985, contents included 16 thrush and 47 cowbird eggs producing 2 thrush and 11 cowbird young (Robinson 1987). Of 94 nests, 75 contained 105 cowbird eggs (S. K. Robinson in Lowther 1993). Both nests found by B. M. Strausberger (unpubl.) were parasitized. REF: Blocher 1924, 1937; E.S.B. 1884; Friederici 1993; Friedmann 1929, 1963, Friedmann et al. 1977; G.K. 1884; Goelitz 1915a; Kleen 1993, 1996; McKinney 1967; Mundt 1883; Nehrling 1880-85, Perry 1908; Poling 1889 [nearby Missouri record]; Robinson 1992; Robinson and Wilcove 1994; Robinson et al 1995b; Trine, in press; Trine et al., in press; Sanborn and Goelitz 1915; Silloway

1902. SETS: 18 (WFVZ, FMNH, ChAS, CU).

• **Gray Catbird, *Dumetella carolinensis*** — Host. Common in brush and woodland edges. At Morton Arboretum, DuPage Co., 4 of 35 nests were found parasitized (B. M. Strausberger, unpubl.) Catbirds usually eject cowbird eggs (Rothstein 1975). BBS: 3.6. G&G: 200,000; REF: Goelitz 1915a. SETS: 1 from SBM.

• **Brown Thrasher, *Toxostoma rufum*** — Host. Common in thickets. Nest with 3 thrasher and 1 cowbird egg on 7 May 1915 (Goelitz 1915a). At Morton Arboretum, 2 of 16 nests were parasitized (B. M. Strausberger, unpubl.). Thrashers usually eject cowbird eggs (Rothstein 1975). BBS: 6.9. G&G: 1,600,000 — 431,000. REF: Blocher 1924; Friedmann 1963, Friedmann et al. 1977; Graber et al 1970; McKinney 1967; Poling 1889; Thompson 1958; Trine et al., in press. SETS: 6 (WFVZ, FMNH, ISM).

• **Cedar Waxwing, *Bombycilla cedrorum*** — Host. Uncommon in open woodlands. Waxwings are known to eject foreign eggs (Rothstein 1975). BBS: 0.9. REF: Bodensten 1939. SETS: 1 in WFVZ.

• **White-eyed Vireo, *Vireo griseus*** — Host. Common in thickets, bottomland forests, and forest edges. BBS: 0.6. At 4 nests observed from nest construction, 2-5 days intervened between nest completion and egg laying, seeming to "invite cowbird parasitism"; 10 of 12 nests in Polk Co. contained 15 cowbird eggs (Graber et al. 1985). REF: Friedmann 1929; Nehrling 1880-85; Poling 1889; Trine et al., in press. SETS: 1 in FMNH.

• **Bell's Vireo, *Vireo bellii*** — Host. Uncommon in shrubby areas and prairie areas with trees. BBS: 0.3. One observation suggestive that this vireo may eject cowbird eggs (Bent 1950), but desertion may be a more usual response (Pitelka and Koestner 1942). No cowbirds were reared from the 4 parasitized nests (of 12 total) found between 1968-1981

(Graber et al. 1985). Holland (1923) found 2 nests in Knox Co. containing eggs of Brown-headed Cowbird AND Red-winged Blackbird! Silloway (1894) found 7 nests in Macoupin Co. with no parasitism. REF: Cory 1909; Friedmann 1929, 1963; Lantz 1883; Thompson 1960. SETS: 1 in FMNH.

• **Solitary Vireo**, *Vireo solitarius* — Host. Very rare in woodlands and edges. The only 2 breeding records for this vireo in the state failed due to cowbird parasitism (Bohlen 1989); but original references (Bjorklund 1979-80, 1980-81) were not explicit about the second year's failure).

• **Yellow-throated Vireo**, *Vireo flavifrons* — Host. Uncommon in forest interiors. BBS: 0.2. Contents of 6 nests included 1 with 4 + 1 eggs; also an observation of a pair feeding a young cowbird (Graber et al. 1985). REF: Friedmann 1929, 1963; Jacobs 1903; Nehrling 1880-1885; Trine et al., in press. SETS: 1 in FMNH.

• **Warbling Vireo**, *Vireo gilvus* — Host. Common in open woods. BBS: 1.9. None of 19 nests were parasitized (Graber et al. 1985); and 3 of a "large number" of sets from near Quincy in Missouri had cowbird eggs (Poling 1889). Warbling Vireos may puncture and eject cowbird eggs (Sealey 1996). REF: Barnes 1890; Eifrig 1937; Friedmann 1929, 1963; Nehrling 1880-95. SETS: 5 in FMNH.

• **Red-eyed Vireo**, *Vireo olivaceus* — Host. Common in woodlands. BBS: 0.7. The 10 of 12 nests contained 13 cowbird eggs producing 10 cowbird young; overall 1.7 vireo and 0.8 cowbird were produced in this Champaign Co. study (Twomey 1945). Of 16 nests, only 1 nest produced young (3 vireos and 1 cowbird!) (Graber et al. 1985). All 6 nests found by B. M. Strausberger (unpubl.) at Morton Arboretum were parasitized. REF: Barnes 1890; Cory 1909; Friedmann 1929, 1963; Goelitz 1915a;

Keen 1992; McKinney 1966; Nehrling 1880-85; Paul 1967; Peer and Bollinger 1997, Poling 1889; Robinson and Wilcove 1994; Robinson et al. 1995b; Sanborn and Goelitz 1915; Thompson and Robinson 1962, 1963, 1965; Trine et al., in press. SETS: 6 (WFVZ, FMNH, ChAS).

unpubl.). REF: Bartel 1932; Cory 1909; Du Bois 1918a; Eifrig 1937; E.S.B. 1884; Friedmann 1929, Friedmann and Kiff 1985; Goelitz 1915a; Johnson 1950; Kleen 1985, 1995; Nehrling 1880-85; Rudolph 1916-1917, Sanborn and Goelitz 1915. SETS: 22 (WFVZ, FMNH, ChAS, ISM).



Eastern Bluebirds are less affected by cowbird parasitism compared with other nesting bird species in Illinois. Here, a male bluebird feeds a female in Springfield. Photo taken 9 May 1996 by Dennis Oelunke.

• **Blue-winged Warbler**, *Vermivora pinus* — Host. Uncommon in forest edges and brushy areas. BBS: +. Only 1 of 8 nests parasitized (Graber et al. 1983).

• **Northern Parula**, *Parula americana* — Host. Common in bottomland forests. BBS: 0.1. REF: Moore 1947.

• **Yellow Warbler**, *Dendroica petechia* — Host. Common in riparian habitats. BBS: 0.4. One of the most commonly reported cowbird hosts (Friedmann 1963). Yellow Warblers will frequently bury nest contents when parasitized, creating multi-storied nests. For nests examined before 1900, 2 of 34 were parasitized; after 1900, 15 of 38 nests were parasitized (Graber et al. 1983). At Morton Arboretum, 3 of 5 nests were parasitized (B. M. Strausberger,

• **Chestnut-sided Warbler**, *Dendroica pensylvanica* — Host. Rare in brushy second-growth habitat. Of 10 nests found, 7 were parasitized (Graber et al. 1983, Thompson and Robinson 1963). REF: Friedmann and Kiff 1985; McKinney 1966, 1967; Milosevich 1996; Nehrling 1880-85.

• **Prairie Warbler**, *Dendroica discolor* — Host. Common in old-field scrub habitats. BBS: +. In Polk Co., 2 of 10 nests were parasitized (Graber et al. 1983).

• **Black-and-white Warbler**, *Mniotilta varia* — Host. Rare in southern Illinois forests. BBS: +. REF: Friedmann 1963.

• **American Redstart**, *Setophaga ruticilla* — Host. Locally common in bottomland woods. BBS: 0.2. Graber et al. (1983) summarized egg collection data: 2 sets with cowbird eggs

Host List, continued

out of 27 pre-1900; 15 of 41 post-1900 sets with cowbird eggs. REF: Friedmann and Kiff 1985; Goelitz 1915a; Nehrling 1880-85; Sanborn and Goelitz 1915. SETS: 12 (WFVZ, FMNH, ChAS).

• **Prothonotary Warbler**, *Protonotaria citrea* — Host. Common in swamps and bottomland forests. BBS: 0.1. Near Quincy, Poling (1890) found 11 of 70 nests parasitized. For a central Illinois sample of (mostly) pre-1900 nests, 24 of 154 were parasitized, but only 1 of 69 nests from northern Illinois (Graber et al. 1983). Barnes (1889) made no mention of cowbird parasitism in discussing examination of "hundreds" of Prothonotary Warbler nests, but he later (Barnes 1890, 1909) listed this warbler as a cowbird host. REF: Friedmann 1929, 1963; Loucks 1893a, 1894; Poling 1889. SETS: 26 (WFVZ, SBCM, FMNH, ISM, PSM).

• **Worm-eating Warbler**, *Helmitheros vermivorus* — Host. Uncommon in bottomland forests. BBS: +. Of 9 nests with contents described, 1 was parasitized (Graber et al. 1983). REF: Kleen and Bush 1972; Robinson and Wilcove 1994; Robinson et al 1995b; Trine et al., in press.

• **Ovenbird**, *Seiurus aurocapillus* — Host. Uncommon in woodlands. BBS: 0.1. Hess (1902) found a nest with 7 cowbird eggs. REF: Friedmann 1929, 1963; Robinson 1992; Robinson and Wilcove 1994; Robinson et al 1995b; Trine et al., in press; Wilson 1912. SETS: 3 (WFVZ, ChAS).

• **Louisiana Waterthrush**, *Seiurus motacilla* — Host. Common in woodlands. BBS: +. Literature mentions 5 instances of cowbird parasitism in Illinois (Graber et al. 1963, Allison 1947). REF: Keen 1992; Robinson 1992; Robinson and Wilcove 1994; Trine et al., in press.

• **Kentucky Warbler**, *Oporornis formosus* — Host. Fairly common in forests. BBS: 0.1. At least 7 of 18 nests parasitized (Poling 1890, Giddings 1897). Thom (1973) noted

Kentucky Warblers caring for 2 out of nest cowbird young. REF: Barnes 1890; Friedmann 1963; Robinson 1992; Robinson and Wilcove 1994; Robinson et al 1995b; Trine et al., in press. SETS: 2 in FMNH.

• **Mourning Warbler**, *Oporornis philadelphia* — Host. Occasional in thickets and woodland undergrowth. REF: Friedmann 1963; Pitelka 1939.

• **Common Yellowthroat**, *Geothlypis trichas* — Host. Common in marshy areas, thickets and forest edges. BBS: 9.9; G&G: about 400,000 in 1907 and 1957. Cowbird parasitism in Illinois is 5 of 30 nests in the north, 7 of 26 nests for the central region, and 3 of 11 in the south (Graber et al. 1983). At Morton Arboretum, 1 of 3 nests were parasitized (B. M. Strausberger, unpubl.). Report of female feeding 3 nearly full grown cowbirds (Graber et al. 1983). REF: Blocher 1924; Cory 1909; Du Bois 1922; Friedmann 1929, 1963, Friedmann and Kiff 1985; Nehrling 1880-85; Poling 1889; Sanborn and Goelitz 1915. SETS: 6 (FMNH, ChAS).

• **Hooded Warbler**, *Wilsonia citrina* — Host. Uncommon in forests. BBS: +. Graber et al. (1983) mention a single parasitized nest. REF: Friedmann 1963; Trine et al., in press.

• **Yellow-breasted Chat**, *Icteria virens* — Host. Common in thickets and forest edges. BBS: 1.9. Illinois records showed 12 of 50 nests contained 16 cowbird eggs (Graber et al. 1983). REF: Barnes 1890; Friedmann 1963; Poling 1889 [nearby Missouri record]; Smith 1920; Trine et al., in press. SETS: 19 (FMNH, DMNH, ChAS, ISM).

• **Summer Tanager**, *Piranga rubra* — Host. Common in upland woods. BBS: 0.2. REF: Cory 1909; Friedmann 1929; Nehrling 1880-85; 1963; Poling 1889; Robinson 1992; Robinson and Wilcove 1994; Trine et al., in press.

• **Scarlet Tanager**, *Piranga olivacea* — Host. Uncommon in forests. BBS: 0.2. REF: Cory 1909; Ford 1956; Friedmann 1929, 1963;

Poling 1889; Robinson 1992; Thompson and Robinson 1963; Trine et al., in press. SETS: 9 (FMNH, SBM).

• **Northern Cardinal**, *Cardinalis cardinalis* — Host. Common in woodland edges and residential areas. BBS: 19.3. G&G: 1,200,000. Of 19 nests, 16 contained cowbird eggs (Blocher 1936). At Morton Arboretum, 109 cowbird eggs were found in 66 of 95 nests found (B. M. Strausberger, unpubl.). REF: Du Bois 1918b; Friedmann 1929, 1963; Goelitz 1915a; Musselman 1918; Nice 1952; Peer and Bollinger 1997; Poling 1889; Robinson 1992; Robinson et al 1995b; Thompson 1960; Thompson and Robinson 1963; Trine et al., in press. SETS: 6 (WFVZ, ChAS).

• **Rose-breasted Grosbeak**, *Pheucticus ludovicianus* — Host. Common in woodlands. The 1 nest found by B. M. Strausberger (unpubl.) was parasitized. BBS: 1.2. REF: Friedmann 1929, 1963; Goelitz 1915a; McKinney 1967; Sanborn 1911; Sanborn and Goelitz 1915. SETS: 5 (WFVZ, FMNH, ChAS).

• **Indigo Bunting**, *Passerina cyanea* — Host. Abundant in open country. BBS: 24.4. G&G: 850,000 — 1,700,000. Of 41 nests in a Champaign Co. study, 16 contained 22 cowbird eggs which produced 15 young (Twomey 1945). A total of 106 cowbird eggs were found in 57 of 67 nests at Morton Arboretum (B. M. Strausberger, unpubl.). REF: Barnes 1890; Friedmann 1929, 1963; Goelitz 1915a; Kleen 1995, 1996; McKinney 1966, 1967; Paul 1969; Poling 1889; Robinson et al 1995b; Thompson and Robinson 1962, 1963, 1965; Trine et al., in press. SETS: 11 (WFVZ, FMNH, ChAS).

• **Dickcissel**, *Spiza americana* — Host. Common in open areas. BBS: 32.5. G&G: 1,700,000 — 3,400,000. Hess (1899) found no cowbird parasitism among 30+ nests. Extensive studies in Kansas find higher rates of parasitism: Zimmerman (1983) found 430 of 620 nests parasitized. This difference indicates either a regional

Table 1. "Common" passerines of Illinois.

Data are mid-point of 1907 and 1957 state-wide population estimates of Graber and Graber (1963).

Species are categorized as:

NIL = no cowbird parasitism expected (incidental or "freak" instances);

LOW = minor host, parasitism rate 1% or less;

REGULAR = "normal" host, perhaps 5 - 20% nests parasitized;

HIGH = more than 20% nests parasitized.

Species	Numbers	Type Host
Eastern Kingbird	328,000	LOW
Horned Lark	3,220,000	REGULAR
Barn Swallow	605,000	NIL
Blue Jay	885,000	NIL
American Crow	784,000	NIL
chickadees	300,000	NIL
Tufted Titmouse	752,000	NIL
Eastern Bluebird	810,000	LOW
American Robin	1,450,000	NIL
Northern Mockingbird	152,000	LOW
Gray Catbird	196,000	LOW
Brown Thrasher	994,000	LOW
European Starling	3,100,000	NIL
Common Yellowthroat	388,000	REGULAR
Northern Cardinal	1,200,000	REGULAR
Indigo Bunting	1,120,000	REGULAR
Dickcissel	2,420,000	REGULAR
Chipping Sparrow	150,000	REGULAR
Field Sparrow	1,550,000	REGULAR
Vesper Sparrow	320,000	REGULAR
Lark Sparrow	190,000	REGULAR
Grasshopper Sparrow	700,000	REGULAR
Savannah Sparrow	275,000	REGULAR
Song Sparrow	215,000	REGULAR
Bobolink	1,520,000	REGULAR
Red-winged Blackbird	6,700,000	REGULAR
meadowlarks	3,500,000	REGULAR
Common Grackle	3,850,000	NIL
Orchard Oriole	260,000	REGULAR
American Goldfinch	880,000	LOW
House Sparrow	5,700,000	NIL

variation in host preferences or lack of thorough studies in Illinois. REF: Friedmann 1963; Hess 1906; Poling 1889. SETS: 4 (WFVZ, DMNH, FMNH, ChAS).

• **Eastern Towhee, *Pipilo erythrophthalmus*** — Host. Common in thickets and woodland edges. BBS: 1.9. Nest with 1 + 8 eggs taken by Goelitz on 14 May 1914 (Barnes 1914b; Goelitz 1915a; possibly also Sanborn and Goelitz 1915). Two other nests with high egg counts contained 2 + 7 and 3 + 7 eggs (Blocher 1936). Both nests found by B. M. Strausberger (unpubl.) at Morton Arboretum were parasitized. REF: Day 1917; Ford 1956; Friedmann 1929, 1963; Poling 1889; Musselman 1918; Robinson 1992; Trine et al., in press. SETS: 14 (WFVZ, FMNH, DMNH, UArk, ChAS).

• **Chipping Sparrow, *Spizella passerina*** — Host. Common in open areas. A total of 16 cowbird eggs were found in 12 of 24 nests at Morton Arboretum (B. M. Strausberger, unpubl.). BBS: 1.4. G&G: 250,000 — 50,000. REF: Barnes 1890; Eifrig 1937; Friedmann 1929, 1963; McKinney 1966, 1967; Musselman 1918; Nehrling 1880-85; Peer and Bollinger 1997; Poling 1889; Trine et al., in press. SETS: 7 (WFVZ, FMNH).

• **Field Sparrow, *Spizella pusilla*** — Host. Common in weedy and brushy areas. BBS: 11.4. G&G: 2,100,000 — 1,400,000. Nest found with 2 + 5 eggs (Barnes 1914a). In 240 acre field, Blocher (1936) found 11 of 14 nests parasitized, including one with 3 + 4 eggs. A total of 25 cowbird eggs were laid in 17 of 29 nests found at Morton Arboretum (B. M. Strausberger, unpubl.). Field Sparrows frequently abandon nests in response to cowbird parasitism (Friedmann 1963). REF: Barnes 1890; Blocher 1924; Du Bois 1918b; Ford 1956; Friedmann 1929, 1963; Goelitz 1915a; Musselman 1918; Poling 1889; Thompson 1958; Thompson and Robinson 1963, 1965. SETS: 18 (WFVZ, FMNH, DMNH).

Host List, continued

- **Vesper Sparrow**, *Poocetes gramineus* — Host. Common in open areas. BBS: 3.6. G&G: 250,000 — 390,000. REF: Blocher 1924; Clark 1901; Friedmann 1963. SETS: 1 from FMNH.
- **Lark Sparrow**, *Chondestes grammacus* — Host. Rare to locally common in open areas or sandy soil. BBS: 0.5. G&G: 500,000 — 80,000. REF: Kleen 1979/80; J. B. Milosevich in Kleen 1993. SETS: 7 from FMNH.
- **Le Conte's Sparrow**, *Ammodramus leconteii* — Host. Formerly very rare in northeast Illinois. One set taken 20 May 1934 from Cook Co. by James G. Suthard had 2 sparrow eggs plus a cowbird chick (WFVZ 114204).
- **Grasshopper Sparrow**, *Ammodramus savaanarum* — Host. Common in open grasslands. BBS: 4.4. G&G: 700,000. SETS: 1 from DMNH.
- **Henslow's Sparrow**, *Ammodramus henslowii* — Victim. Very local in grasslands. BBS: +. REF: Friedmann 1963; Friedmann and Kiff 1985. SETS: 2 from WFVZ.
- **Song Sparrow**, *Melospiza melodia* — Host. Common in brushy areas, woodland edges and open areas. BBS: 19.7. G&G: 180,000 — 250,000. Set with 2 sparrow and 7 cowbird eggs (Blocher 1924, 1926). A total of 56 cowbird eggs were laid in 32 of 54 nests found at Morton Arboretum (B. M. Strausberger, unpubl.). REF: Bodensten 1932; Cory 1909; Du Bois 1918a, 1918b; Ford 1956; Friedmann 1929, 1963; Goelitz 1915a; Kleen 1995; Nehrling 1880-85; Paul 1969; Peer and Bollinger 1997; Thompson 1960. SETS: 19 (WFVZ, FMNH, ChAS).
- **Lincoln's Sparrow**, *Melospiza lincolnii* — Host. Not known to breed in Illinois. A supposed Illinois record is of a set in the Chicago Academy of Sciences (ChAS 2387) which includes the note "questionable record—Very early nesting and large egg." This set was taken 11 May 1896 near Kenilworth, Cook Co., by J. A. Sears.
- **Swamp Sparrow**, *Melospiza georgiana* — Host. Uncommon in moist habitats. BBS: +. REF: Friedmann et al. 1977; Nehrling 1880-85. SETS: 1 from WFVZ.
- **Bobolink**, *Dolichonyx oryzivorus* — Host. Fairly common in open fields. BBS: 4.5. G&G: 1,200,000 — 1,900,000. One northern Illinois set found with 5 + 4 eggs (Abbott 1907). REF: Cory 1909; Friedmann et al. 1977; Goelitz 1915a. SETS: 11 (WFVZ, S, FMNH, DMNH, APM, ChAS).
- **Red-winged Blackbird**, *Agelaius phoeniceus* — Host. Abundant in open habitats. BBS: 191.7. G&G: 5,100,000 — 8,400,000. Goelitz (1916) tells of taking 11 cowbird eggs from a 25 pair red-wing colony on 17 June 1916 and another 6 eggs 10 days later. A total of 52 cowbird eggs were laid in 42 of 114 nests found at Morton Arboretum (B. M. Strausberger, unpubl.). Blocher's (1924) description of a nest found with 3 + 1 young casts doubt on his observation: he wrote that "... in a couple days the Cowbird was twice the size of the Red-wings and in a week he had in some way crowded them out as he was the sole owner." REF: Blocher 1924, 1937; Friedmann 1929, 1963; Kleen 1995; Paruk 1992; Peer and Bollinger 1997; Smith 1943, 1949; Thompson 1960. SETS: 5 (WFVZ, MVZ, FMNH, SBM).
- **Eastern Meadowlark**, *Sturnella magna* — Host. Common in pastures, hayfields and fallow fields. BBS: 41.3. G&G: estimates for both meadowlark species 4,000,000 — 3,800,000. Nest with 4 + 1 + 1 Bobolink eggs (Barnes 1914a). REF: Blocher 1924; Eifrig 1915, 1919; Friedmann 1929, 1963; Goelitz 1915a; Gross in Bent 1958; Thompson 1960; Silloway 1906. SETS: 6 (WFVZ, DMNH, ChAS, FMNH).
- **Western Meadowlark**, *Sturnella neglecta* — Victim. Uncommon locally in open habitats in northern and central Illinois. BBS: 6.7.
- **Yellow-headed Blackbird**, *Xanthocephalus xanthocephalus* — Victim. Uncommon in marshes in northern Illinois. BBS: +. REF: Friedmann 1929, 1963; Friedmann et al. 1977; Loucks 1893b.
- **Brewer's Blackbird**, *Euphagus cyanocephalus* — Host. Rare in open habitats of northeast corner of the state. BBS: 0.1. The one set documenting cowbird parasitism (FMNH 2898) was taken by G. Pearsall near Waukegan, Lake Co., on 21 May 1940 and included 4 + 1 eggs.
- **Common Grackle**, *Quiscalus quiscula* — Victim. Abundant in edge, agricultural and residential habitats. BBS: 131.5. G&G: 4,100,000 — 3,600,000. REF: Barnes 1918; Friedmann 1929, 1963; Strumberg 1879; Thompson and Robinson 1963. SETS: 2 at FMNH.
- **Orchard Oriole**, *Icterus spurius* — Host. Common in open wooded habitats. A total of 15 cowbird eggs were laid in all 9 nests found at Morton Arboretum (B. M. Strausberger, unpubl.). BBS: 0.7. G&G: 400,000 — 120,000. REF: Friedmann et al. 1977; Kleen 1993; Trine et al., in press. SETS: 2 (FMNH, WFVZ).
- **Baltimore Oriole**, *Icterus galbula* — Host. Common in woodlands. Cowbird eggs were laid in 2 of 8 nests found at Morton Arboretum (B. M. Strausberger, unpubl.). Baltimore Orioles are known to eject cowbird eggs (Rothstein 1975). BBS: 2.4. REF: Du Bois 1918a.
- **American Goldfinch**, *Carduelis tristis* — Host. Common in weedy, shrubby habitats. BBS: 9.7. G&G: 880,000. REF: Friedmann 1929, 1963.
- **House Finch**, *Carpodacus mexicanus* — Host. Uncommon and increasing in residential habitats. Cowbird eggs were laid in 4 of 6 nests found at Morton Arboretum (B. M. Strausberger, unpubl.) In Coles Co., cowbirds laid 9 eggs in 7 of 12 House Finch nests (Peer and Bollinger 1997).
- **House Sparrow**, *Passer domesticus* — Host. Abundant in agricultural and residential habitats. BBS: 235.7. G&G: 5,300,000 — 6,100,000. SETS: 1 at WFVZ.

Acknowledgements

Janet Hinshaw helped with finding references not readily available. Scott K. Robinson shared pre-publication manuscripts. B. M. Strausberger was most generous in sharing data from his field studies at Morton Arboretum undertaken as part of his graduate studies at the University of Illinois at Chicago. Comments from an anonymous review were helpful. The following individuals and institutions aided this survey in providing information about collections

in their care: Lloyd F. Kiff and Clark Sumida, Western Foundation of Vertebrate Zoology (WVZ), California Academy of Science (CaAS), San Bernardino County Museum of Natural History (SBCM) and Santa Barbara Museum of Natural History, (SBM); Scott Lanyon and David Willard, Field Museum of Natural History (FMNH); Ron Vasile, Chicago Academy of Sciences (ChAS); N. G. McCartney, University Mu-

seum, University of Arkansas (UArk); Kevin J. McGowan, Cornell University, Ithaca, New York (CU); H. David Bolen, Illinois State Museum (ISM); J. Hall, Putnam Museum, Davenport, Iowa (PSM); David Niles, Delaware Museum of Natural History (DMNH); W. Bruce McGillivray, Alberta Provincial Museum (APM); Barbara Stein, Museum of Vertebrate Zoology, University of California-Berkeley (MVZ).

APPENDIX

List of additional Victim and Host species which nest in Illinois but have not been recorded as being parasitized in Illinois. The non-passerines in the list can all be considered incidental victims.

Blue-winged Teal (<i>Anas discors</i>)	Bewick's Wren (<i>Thryomanes bewickii</i>)
Virginia Rail (<i>Rallus limicola</i>)	Sedge Wren (<i>Cistothorus platensis</i>)
Spotted Sandpiper (<i>Actitis macularia</i>)	Marsh Wren (<i>Cistothorus palustris</i>)
Upland Sandpiper (<i>Bartramia longicauda</i>)	House Wren (<i>Troglodytes aedon</i>)
Wilson's Phalarope (<i>Phalaropus tricolor</i>)	American Robin (<i>Turdus migratorius</i>)
Common Tern (<i>Sterna hirundo</i>)	Northern Mockingbird (<i>Mimus polyglottos</i>)
Mourning Dove (<i>Zenaidura macroura</i>)	Loggerhead Shrike (<i>Lanius ludovicianus</i>)
Black-billed Cuckoo (<i>Coccyzus erythrophthalmus</i>)	European Starling (<i>Sturnus vulgaris</i>)
Ruby-throated Hummingbird (<i>Archilochus colubris</i>)	Yellow-throated Warbler (<i>Dendroica dominica</i>)
Red-headed Woodpecker (<i>Melanerpes erythrocephalus</i>)	Pine Warbler (<i>Dendroica pinus</i>)
Western Kingbird (<i>Tyrannus verticalis</i>)	Cerulean Warbler (<i>Dendroica cerulea</i>)
Purple Martin (<i>Progne subis</i>)	Swainson's Warbler (<i>Limothlypis swainsonii</i>)
Tree Swallow (<i>Tachycineta bicolor</i>)	Canada Warbler (<i>Wilsonia canadensis</i>)
Northern Rough-winged Swallow (<i>Stelgidopteryx serripennis</i>)	Blue Grosbeak (<i>Guiraca caerulea</i>)
Barn Swallow (<i>Hirundo rustica</i>)	Clay-colored Sparrow (<i>Spizella pallida</i>)
American Crow (<i>Corvus brachyrhynchos</i>)	Savannah Sparrow (<i>Passerculus sandwichensis</i>)
Red-breasted Nuthatch (<i>Sitta canadensis</i>)	Red Crossbill (<i>Loxia curvirostra</i>)
Brown Creeper (<i>Certhia americana</i>)	Pine Siskin (<i>Carduelis pinus</i>)

Literature Cited

- Abbott, G. A. 1907. Additional notes on the Bobolink. *Oologist* 24: 22-23.
- Allison, D. G. 1947. Bird populations of forest and forest edge in central Illinois. MS thesis, Univ. Illinois.
- Barnes, R. M. 1889. Nesting of the Prothonotary Warbler. *Ornithol. and Ool.* 14: 37-39.
- . 1890. List of birds breeding in Marshall County, Ill. *Ornithol. and Ool.* 15: 113-116.
- . 1909. The Prothonotary Warbler. (*Protonotaria citrea*.) *Oologist* 26: 102-105.
- . 1914a. [Note from E. R. Ford.] *Oologist* 31: 119.
- . 1914b. [Note from W. A. Goeltz.] *Oologist* 31: 119.
- . 1918. Some queer things. *Oologist* 35: 106-109.
- Bartel, K. E. 1932. Oology from Blue Island, Ill. *Oologist* 49: 128-129.
- . 1935. Six year migration summary. *Oologist* 52: 11.
- Bendire, C. E. 1895. Life histories of North American birds, from the parrots to the grackles, with special reference to the breeding habits and eggs. U.S. Nat. Mus. Bull.
- Bent, A. C. 1950. Life histories of North American wagtails, shrikes, vireos, and their allies. U.S. Nat. Mus. Bull. 197.
- . 1958. Life histories of North American blackbirds, orioles, tanagers, and allies. U.S. Nat. Mus. Bull. 211.
- Bjorklund, R. 1979/80. Nesting Solitary Vireo in central Illinois. *Illinois Audubon Bull.*, no. 191: 21-23.
- . 1980/81. Observational evidence for homing in birds. *Illinois Audubon Bull.*, no. 195: 27-28.
- Blocher, A. 1921. Freak sparrow eggs. *Oologist* 38: 129.
- . 1924. Song-Sparrow-Cowbird. *Oologist* 41: 9-10.
- . 1926. Large sets. *Oologist* 43: 49-50.
- . 1933. Depression. *Oologist* 50: 57-58.
- . 1936. Cowbirds. *Oologist* 53: 131-133.
- . 1937. Desertions. *Oologist* 54: 67-70.
- Bohlen, H. D. 1989. The birds of

- Illinois. Indiana Univ. Press, Bloomington, IN.
- Bodensten [Bodenston, *sic*], A. J. 1932. A mystery. *Oologist* 49: 120.
- . 1939. Two experiences while collecting. *Oologist* 56: 75-77.
- Brenneman, W. 1980. [Cover photograph]. *Illinois Audubon Bull.*, no. 193.
- Clark, E. G. 1901. Birds of lakeside and prairie. A. W. Mumford, Publ., Chicago.
- Cory, C. B. 1909. The birds of Illinois and Wisconsin. *Field Mus., Zool. Series* vol. 9, Publ. 131.
- Day, G. W. 1917. Nests. *Oologist* 34: 54-55.
- Du Bois, A. D. 1918a. The old orchard on the hill. *Oologist* 35: 52-53.
- . 1918b. An annotated [*sic*] list of birds observed from May to July in central Logan County, Illinois. *Oologist* 35: 143-146.
- . 1922. Cowbird and Yellowthroat. *Oologist* 39: 81-82.
- E. S. B. 1884. The Summer Yellow-Bird and Cow-Bird again. *Young Oologist* 1: 53.
- Eifrig, C. W. G. 1915. Field notes from the Chicago area. *Wilson Bull.* 27: 417-419.
- . 1919. Notes on birds of the Chicago area and its immediate vicinity. *Auk* 36: 512-524.
- . 1937. The changing status of birds as regards their abundance. *Illinois State Acad. Sci. Trans.* 30: 295-297.
- Erskine, A. J. 1978. The first ten years of the co-operative Breeding Bird Survey in Canada. Canadian Wildlife Service, Report Series No. 42.
- [Finley, C. W.] 1917-1918. Birds' nests on the campus at Macomb. *Audubon Bull.*, winter 1917-1918: 10-16.
- Ford, E. R. 1956. Birds of the Chicago region. *Chicago Acad. Sci.*, spec. publ. 12.
- Friederici, P. 1993. Declining neotropical migrants. *Meadowlark* 2: 2-4.
- Friedmann, H. 1929. The cowbirds, a study in the biology of social parasitism. Charles Thomas Publ., Springfield, Illinois.
- . 1963. Host relations of the parasitic cowbirds. *U.S. Nat. Mus., Bull.* 233.
- , and L. F. Kiff. 1985. The parasitic cowbirds and their hosts. *Proc. Western Foundation Vert. Zool.* 2: 225-304.
- , ———, and S. I. Rothstein. 1977. A further contribution to knowledge of the host relations of the parasitic cowbirds. *Smithson. Contr. Zool.* 235.
- G. K. 1884. Eggs of the Cow Bird. *Young Oologist* 1: 37.
- Goelitz, W. A. 1915a. Cowbird notes. *Oologist* 32: 152.
- . 1915b. Large sets of 1915. *Oologist* 32: 147-149.
- . 1916. The lazy bird. *Oologist* 33: 146-147.
- Graber, J. W., and R. R. Graber. 1973. Nesting distribution of the Veery in Illinois. *Illinois Audubon Bull.*, no. 164: 50-52.
- , ———, and E. L. Kirk. 1983. Illinois birds: wood warblers. *Illinois Nat. Hist. Surv., Biol. Notes* 118: 1-144.
- , ———, and ———. 1985. Illinois birds: vireos. *Illinois Nat. Hist. Surv., Biol. Notes* 124: 1-38.
- Graber, R. R., and J. W. Graber. 1963. A comparative study of bird populations in Illinois, 1906-1909 and 1956-1958. *Illinois Nat. Hist. Surv., Bull.* 28(3): 383-528.
- , ———, and E. L. Kirk. 1970. Illinois birds: Mimidae. *Illinois Nat. Hist. Surv. Biol. Notes* 68: 1-38.
- , ———, and ———. 1971. Illinois birds: Turdidae. *Illinois Nat. Hist. Surv., Biol. Notes* 75: 1-44.
- , ———, and ———. 1972. Illinois birds: Hirundinidae. *Illinois Nat. Hist. Surv. Biol. Notes* 80: 1-36.
- , ———, and ———. 1974. Illinois birds: Tyrannidae. *Illinois Nat. Hist. Surv. Biol. Notes* 86: 1-56.
- Green, T. R. 1917. Strange nesting site of the Wood Pewee. *Oologist* 34: 193-194.
- Jackson, N. H. and D. D. Roby. 1992. Fecundity and egg-laying patterns of captive yearling Brown-headed Cowbirds. *Condor* 94: 585-589.
- Hess, I. E. 1899. Dickeissel in his Illinois haunts. *Oologist* 16: 7-8.
- . 1902. My first Oven Bird's nest. *Oologist* 19: 165.
- . 1906. [letter]. *Oologist* 23: 42.
- Hölford, K. C. and D. D. Roby. 1993. Factors limiting fecundity of captive Brown-headed Cowbirds. *Condor* 95: 536-545.
- Holland, H. M. 1923. Cowbird-like behavior of Red-winged Blackbird. *Auk* 40: 127-128.
- Jackobs, J. W. 1903. The Yellow-throated Vireo. *Wilson Bull.* 10: 19.
- Johnson, L. G. 1950. Yellow Warbler nesting notes. *Audubon Bull.*, no. 74: 1-3.
- Kendeigh, S. C. 1982. Bird populations in east central Illinois: fluctuations, variations, and development over a half-century. *Illinois Biol. Monogr.* 52.
- Kleen, V. M. 1979/80. Field notes. Breeding season. *Illinois Audubon Bull.*, no. 191: 25-34.
- . 1985. Field notes - the breeding season. *Illinois Birds & Birding* 1: 14-20.
- . 1986. Field notes - the breeding season. *Illinois Birds & Birding* 2: 11-17.
- . 1992. Field notes, 1991 breeding season. *Meadowlark* 1: 25-39.
- . 1993. Field notes, 1992 breeding season. *Meadowlark* 2: 23-36.
- . 1995. Field notes, 1994 breeding season. *Meadowlark* 4: 25-40.
- . 1996. Field notes, 1995 breeding season. *Meadowlark* 5: 27-40.
- , and L. Bush. 1972. Middlewestern prairie region. *Amer. Birds* 27: 777-781.
- Koford, R. R., B. S. Bowen, J. T. Lokemoen, and A. D. Kruse, in press. Cowbird parasitism in grassland and cropland in the northern Great Plains, in *Ecology and management of cowbirds* (T. Cook, S. K. Robinson, S. I. Rothstein, S. G. Sealy, J. N. M. Smith, eds.), Univ. Texas Press, Austin, TX.
- Lantz, D. E. 1883. Bells Vireo. *Ornithol. and Ool.* 8: 95.
- Loucks, W. E. 1893a. The Golden Swamp Warbler. *Oologist* 10: 19-21.
- . 1893b. Distribution of the Yellow-headed Blackbird in Illinois. *Ornithol. and Ool.* 18: 109.
- . 1894. Life hist. & distr. of Prothonotary Warbler in Illinois. *Bull. Illinois State Lab. Nat. Hist.* 4: 31-32.
- Lowther, P. E. 1993. Brown-headed Cowbird (*Molothrus ater*). In *Birds of North America*, No. 47 (A. Poole and F. Gill, Eds.), Philadelphia: Acad. Nat. Sci.; Washington, DC: Amer. Ornith. Union.
- Mayfield, H. 1965. The Brown-headed Cowbird, with old and new hosts. *Living Bird* 4: 13-28.
- McKinney, N. 1966. Illinois nesting records - 1965. *Audubon Bull.*, no. 138: 13-21.
- . 1967. Illinois nesting records for 1966. *Audubon Bull.*, no. 142: 16-23.
- Milosevich, J. B. 1996. Breeding Chestnut-sided Warblers in eastern Will County. *Meadowlark* 5: 22-24.
- Moore, G. E. 1947. Briefs. *Bluebird* 14(7): n.p.
- Mundt, A. H. 1883. Oological and ornithological. *Ornithol. and Ool.* 8: 9-10.
- [Musselman, T. E.] 1918. Criticising [*sic*] the cowbird. *Audubon Bull.*, spring & summer 1918: 18-19.
- . 1946a. Band bluebirds by the thousands if you wish. *Audubon Bull.*, no. 58: 7-10.

- . 1946b. Some interesting nest habits of the Eastern Bluebird (*Sialia sialis sialis*). *Bird-Banding* 42: 60-63.
- Nehrling, H. 1880-1885. Beiträge zur Ornithologie des nördlichen Illinois. *J. Orn.* 28: 408-418; 29: 196-203, 405-416; 31: 84-97, 255-257; 33: 142-151.
- Nice, M. M. 1952. Breeding birds of Jackson Park, [Chicago, IL]. *Audubon Bull.*, no. 82: 3-7.
- Paul, J. R. 1969. Illinois nesting records / 1968. *Audubon Bull.*, no. 150: 6-11.
- Parak, J. D. 1992. Reproductive success of upland nesting Red-winged Blackbirds within an interstate right-of-way in northwestern Illinois. *Trans. Illinois State Acad. Sci.* 85: 201-204.
- Peer, B. D. and E. K. Bollinger. 1997. Explanations for the infrequent cowbird parasitism on Common Grackles. *Condor* 99: 161-161.
- Perry, G. P. 1908. Nest of Wood Thrush into which a Cowbird had deposited five eggs. *Bird Lore* 10: 126-127.
- Pickwell, G. B. 1931. The Prairie Horned Lark. *Trans. St. Louis Acad. Sci.* 27: 153.
- Pitelka, F. A. 1939. Mourning Warbler in the Chicago region. *Auk* 56: 481.
- , and E. J. Koestner. 1942. Breeding behavior of Bell's Vireo in Illinois. *Wilson Bulletin* 54: 97-106.
- Poling, O. C. 1889. A list of birds in whose nests the cowbird's eggs have been found. *Ornithol. and Ool.* 14: 133-134.
- . 1890. Further notes on the Cowbird, with remarks on the nesting of the Prothonotary Warbler at Quincy, Illinois. *Ornithol. and Ool.* 15: 92.
- Pratt, W. C. 1890. Notes from Lake Forest, Ill. *Ornithol. and Ool.* 15: 70.
- Price, J., S. Droege, and A. Price. 1995. The summer atlas of North American birds. Academic Press, New York, NY.
- Robbins, C. S., D. Bystrak, and P. H. Geissler. 1986. The Breeding Bird Survey: its first fifteen years, 1965-1979. U.S. Fish & Wildlife Service, Resour. Publ. 157.
- Robinson, S. K. 1987. Woodland birds of Illinois. *Field Mus. Nat. Hist. Bull.* 58(8): 15-21.
- . 1992. Population dynamics of breeding birds in a fragmented Illinois landscape, pp. 408-418. *In Ecology and conservation of neotropical migrant landbirds* (J. M. Hagen and D. W. Johnston, eds.), Smithsonian Inst. Press, Washington, DC.
- . 1996. Looking at the big picture. *Living Bird* 15(2): 9.
- and D. S. Wilcove. 1994. Forest fragmentation in the temperate zone and its effects on migratory songbirds. *Bird Conservation International* 4: 233-249.
- , S. I. Rothstein, M. C. Brittingham, L. J. Petit, and J. A. Grzybowski. 1995a. Ecology and behavior of cowbirds and their impacts on host populations, pp. 428-460, in *Ecology and management of neotropical migratory birds* (T. E. Martin and D. M. Finch, eds.), Oxford Univ. Press, Oxford.
- , F. R. Thompson, III, J. M. Donovan, D. R. Whitehead, and J. Faaborg. 1995b. Regional forest fragmentation and the nesting success of migratory birds. *Science* 267: 1987-1990.
- , J. P. Hoover, R. Jack, and J. L. Herkert. in press. Effects of tract size, habitat, cowbird density, and nesting stratum on cowbird parasitism levels. in *Ecology and management of cowbirds* (T. Cook, S. K. Robinson, S. I. Rothstein, S. G. Sealy, and J. N. M. Smith, eds.), Univ. Texas Press, Austin, TX.
- Rothstein, S. I. 1975. Evolutionary rates and host defenses against avian brood parasitism. *Amer. Natur.* 109: 161-176.
- Rudolph, P. D. 1916-1917. The Yellow Warbler's nest. *Audubon Bull.*, 1916-1917: 35.
- Scott, C. M., and C. D. Ankney. 1980. Fecundity of the Brown-headed Cowbird in southern Ontario. *Auk* 97: 677-683.
- Sanborn, C. C. 1911. Notes from northern Illinois. *Oologist* 28: 180.
- and W. A. Goeltz. 1915. A two year nesting record in Lake County, Illinois. *Wilson Bull.* 27: 434-448.
- Sealy, S. G. 1996. Evolution of host defenses against brood parasitism: implications of puncture-ejection by a small passerine. *Auk* 113: 346-355.
- Shankland, F. N. 1924. Some notes on the cowbird. *Oologist* 41: 45-47.
- Silloway, P. M. 1894. Bell's Vireo. *Oologist* 11: 234-236.
- . 1902. A novice's note-book. *Oologist* 19: 3-5.
- . 1906. A novice's note book — No. 6. *Oologist* 23: 155-156.
- Smith, H. M. 1943. Size of breeding populations in relation to egg-laying and reproductive success in the Eastern Red-wing (*Agelaius phoeniceus*). *Ecology* 24: 183-207.
- . 1949. Irregularities in the egg-laying behavior of the Eastern Cowbird. *J. Colorado-Wyoming Acad. Sci.* 4: 60.
- S[mith], J. L. 1920. The Yellow-breasted Chat. *Audubon Bull.*, Fall 1920: 22-23.
- Strumberg, C. W. 1883. Notes from Galesburg, Ill. *Ornithol. and Ool.* 8: 8.
- Thom, R. H. 1973. Notes on the birds of Hidden Springs State Forest. *Audubon Bull.*, no. 166: 33-40.
- Thompson, F. R., III. 1994. Temporal and spatial patterns of breeding in Brown-headed Cowbirds in the midwestern United States. *Auk* 111: 979-990.
- , S. K. Robinson, T. M. Donovan, J. Faaborg, and D. R. Whitehead. in press. Biogeographic landscape and local factors affecting cowbird abundance and host parasitism levels, in *Ecology and management of cowbirds* (T. Cook, S. K. Robinson, S. I. Rothstein, S. G. Sealy, and J. N. M. Smith, eds.), Univ. Texas Press, Austin, TX.
- Thompson, M. D. 1958. The 1959 [sic, = 1958] breeding bird census. *Audubon Bull.*, no. 108: 5-11.
- . 1960. The 1959 nesting report. *Audubon Bull.*, no. 115: 7-13.
- , and O. M. Robinson. 1962. Illinois nesting records - 1961. *Audubon Bull.*, no. 122: 14-19.
- , and ———. 1963. Illinois nesting records - 1962. *Audubon Bull.*, no. 126: 7-15.
- , and ———. 1965. Illinois nesting records - 1963-1964. *Audubon Bull.*, no. 134: 5-17.
- Trine, C. L. in press. Effects of multiple parasitism on cowbird and Wood Thrush nesting success, in *Ecology and management of cowbirds* (T. Cook, S. K. Robinson, S. I. Rothstein, S. G. Sealy, J. N. M. Smith, eds.), Univ. Texas Press, Austin, TX.
- , W. D. Robinson and S. K. Robinson. in press. Consequences of Brown-headed Cowbird brood parasitism for host population dynamics, in *Avian brood parasitism* (S. I. Rothstein and S. K. Robinson, eds.), Oxford Univ. Press, New York, NY.
- Twomey, A. C. 1945. The bird population of an elm-maple forest with special reference to aspektion, territorialism and coactions. *Ecol. Monogr.* 15: 174-205.
- Wilson, B. H. 1912. Red-letter days in the country. *Oologist* 29: 281-285.
- Zimmerman, J. L. 1983. Cowbird parasitism of Dickcissels in different habitats and at different nest densities. *Wilson Bull.* 95: 7-22.

—Peter E. Lowther
Field Museum of Natural History
Roosevelt Road at Lake Shore
Drive, Chicago, IL 60604

AVIAN COUNTERPOINT

Comments on the Parentage of a Hybrid Goose

I read with interest Nancy Bent's article (Bent 1995) on a hybrid goose believed to be a cross between *Branta canadensis* X *Anser albifrons*. I agree with the presumed genera (i.e., *Branta* X *Anser*) involved in the cross but question the selection of the *Anser* species (i.e., Greater White-fronted Goose) and the *Branta* subspecies and suggest other, apparently unconsidered, parentage of the hybrid observed. My reasons for questioning the proposed cross are: (a) observation of free-flying domestic greylag geese (*Anser anser*) in flocks of Canada Geese in the region; (b) apparent domestic characteristics displayed in the hybrid photographs in her article; (c) limited opportunity for *B. c. interior* to pair with Greater White-fronted Geese on the wintering grounds; (d) observations of a similarly appearing family group of hybrids with the parents present; and (e) observations of several similarly appearing birds in flocks of apparent wild/feral giant Canada Geese (*B. c. maxima*).

Free-flying feral domestic geese (*A. anser*) occur with Canada Geese in northeastern Illinois occasionally throughout the year. I have observed greylag geese almost yearly, for the past twenty years, associating with "resident" giant Canada Geese. The occurrence of feral greylag geese suggests another possible parentage of the hybrid goose that may not have been considered by Ms. Bent. Delacour (1964:154-159) discussed the origin and various varieties of domestic waterfowl and hybrids between domestic *A. anser* and *A. cygnoides* (Swan Goose). He reported that these species will hybridize with each other or other species in captivity, including *Branta*. Delacour noted that while the wild ancestors of the domestic greylag goose have orange feet and legs, they arose from wild forms having rosy pink or or-

ange bills and rosy pink feet and legs. Others noted that the greylag and White-fronted Goose's bill color may be pink, orange, yellow, or variably colored depending upon the subspecies/race or age of the bird (Delacour 1954, Johnsgard 1978, Bellrose 1981, Madge and Burn 1988, Kaufman 1994).

The Brookfield goose's pink bill apparently was an important factor for proposing the white-fronted goose as one of the parents involved here. I would suggest that the pink bill color may not necessarily be a good characteristic for species determination. The Greater White-fronted Goose is reported to possess a pink to orange bill (Delacour 1954, Johnsgard 1978, Bellrose 1981, Madge and Burn 1988, Kaufman 1994). A similar range of color is reported for wild greylag geese (Delacour 1954, Johnsgard 1978, Bellrose 1981, Madge and Burn 1988). Kaufman (1994) cautioned on the use of bill color alone to separate races of Greater White-fronted Geese. He cautioned that the description and perceptions of colors among observers may vary greatly and may be influenced by ambient light (early morning and late afternoon contain more red or yellow color and can influence objects' color), quality and type of optics used, and film type. As noted above, bill color among white-fronted geese may be quite variable. I suggest that similar caution might be considered in this case.

Delacour (1964:155) discusses morphological and behavioral changes that occur as wild species are domesticated. These include changes in how the body is carried (i.e. a more upright stance) and development of "pot belly". The hybrid goose pictured in the photograph accompanying Ms. Bent's (1995) article appears to possess both of these subtle domes-

tic characteristics. Female Canada Geese exhibit similar bagginess just before nest initiation and egg laying, but I cannot recall observing geese in this condition during the fall. This suggests to me that a domestic strain may be a parent.

At least three races (subspecies) of Canada Geese may occur in the state of Illinois (Giant=*maxima*, Todd's=*interior*, Lesser/Richardson's=*parvipes/hutchinsi*.) Of these three races, only the small *parvipes/hutchinsi* winters in close association with white-fronted geese. Thus, they would have a greater opportunity to form pair bonds on a common wintering area. This race is among the smallest of the dozen races of Canada Geese. Adults weigh 4-5 lbs. (1.8-2.3 Kg) and frequently are the size of male mallards (*Anas platyrhynchos*) and would not be confused with Todd's or giant races. Todd's race of Canada Geese historically may have wintered along the Gulf coast of Louisiana and Texas, but now winter from northern Alabama, Mississippi, and central Arkansas northward (Bellrose 1981, Trost et al. 1981). Thus, the opportunity for Todd's race to associate with *albifrons* is very limited. Within the past ten years, white-fronted geese have begun moving through Illinois in greater numbers. They even winter irregularly and in small numbers with the majority of Todd's population wintering in southern Illinois. Even though these recent changes provide an opportunity for such cross specific mating to occur, I feel such matings very unlikely.

A much greater opportunity for hybridization occurs between resident giant Canada and domestic greylag geese. Domestic greylag geese frequently are kept and displayed by private and public pond/wetland owners including city parks and children's petting zoos. The year-round asso-

ciation between resident giant Canada Geese and domestic greylag geese would increase the opportunity for such pair formation.

I also would caution observers from routinely identifying the subspecies of Canada Geese in the field. The taxonomy of this species is quite complex and differences in size are difficult to determine in the field. An excellent discussion of this problem may be found in Moser and Rolley (1990). Although the giant is the largest of the subspecies, there is some overlap in morphological measurements between two races (i.e., Todd's and giant). Moser and Rolley (1990) could identify subspecies with a high degree of accuracy by using morphology measurements and a complicated discriminant function analysis statistical procedure.

While censusing and banding Canada Geese during the breeding and fall migratory periods in north-eastern Illinois over the past twenty years, I have observed, nearly annually, geese similar in appearance to the Brookfield goose Ms. Bent reports. In addition, I have observed free-flying domestic greylag geese associating with resident Canada Geese. Based upon behaviors observed, (i.e., defense of a territory, pair greeting, and triumph ceremonies: Johnsgard 1965, Collians and Jahn 1950), I have several times found mixed pairs of these two species in-

cluding one pair associated with a brood of nearly fledged young. Members of this brood resembled the individual pictured in this article. My most recent observation of geese resembling the goose pictured in Ms. Bent's article were two individuals at Fermi National Accelerator Laboratories near Warrenville, Illinois, in early November 1995. These individuals, or similar appearing birds,

have been observed at Fermi on several different occasions during the past few years.

I commend Ms. Bent for reporting her observation and concur with the generic identification of this bird (*Anser X Branta*). However I feel that there may be other possible species and/or races involved in the parentage of the goose she reported.

Literature Cited

Bellrose, F.C. 1981. Ducks, geese and swans of North America. Third ed. Stackpole Books, Harrisburg, PA. 540 p.

Bent, N. 1995. Probable *Branta X Anser* hybrid. Meadowlark 4:64-65.

Collians, N.E., and L.R. Jahn. 1950. Social behavior and breeding success in Canada Geese (*Branta canadensis*) confined under semi-natural conditions. Auk 76:478-509.

Delacour, J. 1954. The Waterfowl of the world. Vol. I. County Life Ltd., London 284p.

_____. 1964. The Waterfowl of the world. Vol. IV. County Life Ltd., London 364p.

Johnsgard, P.A. 1965. Handbook of waterfowl behavior. Cornell Univ. Press, Ithaca, NY. 378p.

_____. 1978. Ducks, geese, and swans of the world. Univ. of Neb. Press. Lincoln. 404p.

Kaufman, K. 1994. Greenland white-fronted geese over-reported. Birding 26:380-382.

Madge, S. and H. Burn. 1988. Wildfowl: an identification guide to duck, geese and swans of the world. Houghton, Mifflin Co. Boston 298p.

Moser, T.J. and R.E. Rolley. 1990. Discrimination of giant and interior Canada geese of the Mississippi Flyway. Wildl. Soc. Bull. 18:381-388.

Trost, R. E., D.H. Rusch, and D. H. Orr. 1981. Population affinities of Canada geese from six southern refuges.

Proc. Annu. Conf. Southeastern Assoc. Fish Wildl. Agencies. 34:598-606.

—R.A. Montgomery
Max McGraw Wildlife Foundation
P.O. Box 9
Dundee, IL 60118

Reply to Montgomery

Bob Montgomery raises interesting points in his critique of my identification of a goose with unusual plumage as a cross between *Branta canadensis* and *Anser albifrons* (Bent 1995). Most of his points question the species identification of the hybrid's *Anser* parent, with one point questioning the subspecies of *Branta* involved as the other parent. I will deal with the questions of the *Anser* parent first.

The main argument regarding the identity of the hybrid's *Anser* parent rests on the presence of free-flying "domestic" or "feral greylag" geese in flocks of resident Canada Geese (*B. c. maxima*) found in the Chicago area (his points a, b, d, e). All breeds of domestic geese, with the exceptions of the Chinese and the African, are derived from the Western Greylag Goose (*Anser anser anser*) (Delacour 1954, 1964; Scott

1972; Crawford 1984). While it was not entirely clear what Mr. Montgomery meant by "domestic" or "feral greylag" geese (were these geese actual escaped greylags? were they domestics of the grey, wild coloration? were they white?), they probably descend from domestic stock and therefore are of Western Greylag origin.

When determining the parent species of any hybrid we must look

at the entire suite of characteristics. I therefore compiled some characteristics of the Greater White-fronted, the Western Greylag, and the observed hybrid geese (Table 1). It is clear when comparing the traits in the table that the hybrid inure closely resembles the Greater White-fronted Goose than the Western Greylag Goose.

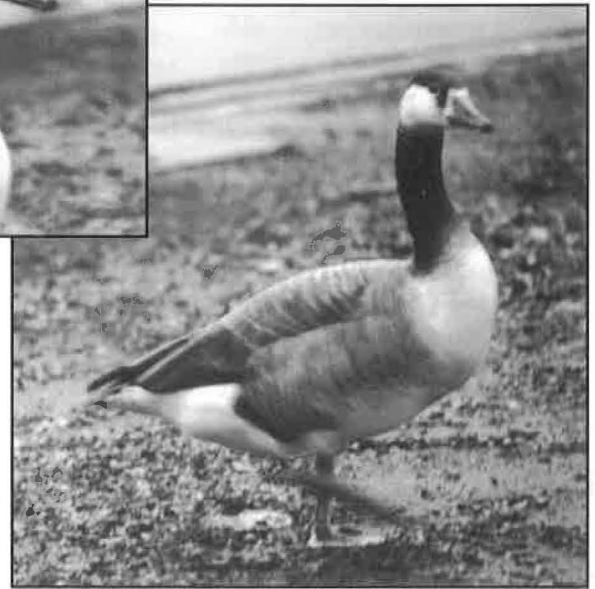
First, though Mr. Montgomery is correct when he mentions that bill color ranges from pink to orange in both the Greylag and the White-fronted Goose (see his references), the **subspecies** of each goose involved is critically important when comparing bill colors. The Greater White-fronted Goose (*Anser albifrons frontalis*) is the form found in all of North America except Alaska, and this subspecies has a pink bill (Ely and Dzabin 1994). The only member of this species with a truly orange bill is the Greenland race (*A. a. fulvirostris*), and it is extremely unlikely that this subspecies could have been available to pair with a Canada Goose on the Mississippi Flyway. The Western Greylag (*Anser anser anser*), and its domestic derivatives, has an orange bill (Delacour 1954). The hybrid's pink bill suggests a Greater White-fronted Goose parent.

Mr. Montgomery is also correct in pointing out the problems of color perception in the differentiation of White-fronted Goose races. The gray, diffuse light of the day on which my original color photos (printed in black and white in *Meadowlark*) were taken was just about ideal for accurate rendering of the colors of the geese. Also, many observers at the zoo on both days the goose was present commented on the bird's pink bill.

Second, the color of the hybrid's face is very suggestive of a White-

fronted Goose parent. The distinct white band visible above the bill on the hybrid is a diagnostic feature of *Anser albifrons*, and is not seen on any form of *Anser anser*.

Third, the legs and feet of the hybrid were a distinct orange color. All races of the Greylag, whatever their bill color, possess pink leg and feet, while all races of the White-fronted, whatever their bill color, possess orange legs and feet. As hybrid *Anseriformes* usually show characteristics of both parent species distinctly in their patterning (Korhight 1967), the most likely explanation for the observed characteristics of



Nancy Bent photos showing probable *Branta X Anser* species hybrid. Brookfield Zoo, Cook County, 27 Nov. 1994.

Table 1: Selected characteristics of two species of *Anser* and an observed hybrid *Branta X Anser* goose at Brookfield Zoo, 27-28 November 1994.

Characteristic	Greater White-fronted Goose (<i>Anser albifrons frontalis</i>)	Hybrid <i>Branta X Anser</i>	Western Greylag Goose (<i>Anser anser anser</i>)
Bill	pinkish with light orange wash above nostrils, nail cream to tan, pink	pink, paler around nostrils, dark tip around nail	orange, narrow strip of flesh color behind nail and along culmen
Face	band of white feathers at base of bill, large white patch on fore crown and sides of face ²	band of white feathers at base of bill ⁴	ashy brown ¹ , brownish grey ³
Legs and Feet	orange to reddish, orange ¹ , orange ³	orange ⁴	pink ² pink ³

1. Ely and Dzubin 1994 2. Delacour 1954 3. Owen 1980 4. Bent 1995, unpublished color photographs

the hybrid is that its *Anser* parent was a White-fronted Goose.

Mr. Montgomery also mentioned that he feels that the hybrid goose in my published photographs shows subtle domestic characteristics, specifically upright carriage and a pot belly. If one looks at the photo showing the hybrid with a Canada Goose, one will note that both birds show upright carriage. This is because they were alert — I had been stalking them with my camera for a few minutes, and the hybrid's entire subgroup (the presumed family) was well aware of my presence and consequently appeared nervous. As for the pot belly, this is a somewhat subjective observation which is not apparent to me.

Mr. Montgomery's observations of hybrid geese during the migratory and wintering periods do not preclude *Anser albifrons* as a parent if the hybrid is with a migratory flock of *Branta canadensis* (particularly if they are of the *interior* race). For example, were the hybrid birds seen at Fermi Lab with a migratory group of Canada Geese? Were they seen at Fermi all winter? What subspecies of Canada Goose were they closely associating with? It is possible that these were more hybrids similar to the one at Brookfield Zoo, also associating with a flock of *Branta canadensis interior*, some of which were their "families" (see Palmer 1976 for a discussion of Canada Goose families).

Finally, to address Mr. Montgomery's questioning of my identification of the Canada Goose race *interior* as the parent of the observed hybrid goose (his point c), I feel that in his discussion of the wintering ranges of White-fronted and *interior* Canada Geese he is begging the issue of overlap. A quick comparison of the full extent of the wintering ranges of the two species (see Ely and Dzubin 1994 for White-front; Palmer 1976 for *interior* Canada) shows at least historical overlap along the Gulf Coast, and Trost *et al.* (1981) mention that Mississippi Valley population Canada Geese alter their wintering areas, staying in more northerly areas unless cold weather forces them

to move south. They therefore move in and out of the wintering range of White-fronted Geese, depending on the conditions in a given year. Also, Mr. Montgomery's point that both *interior* and *Anser albifrons* are now found wintering in southern Illinois actually lends weight to the presumed parentage of the observed hybrid. Both species form pair bonds during winter (Palmer 1976), and it is much more likely that an interior Canada would encounter and then mistakenly pair with a White-front than with a domestic goose.

Greater White-fronted Geese are known to engage in extra-pair copulations both forced and unforced (Ely 1989). While these observations were of intra-species behavior during the breeding season, this establishes that promiscuity is part of the behavioral repertoire of a seemingly monogamous bird with strong, stable pair bonds (Ely 1989; Ely and Dzubin 1994). The fact that extra-pair copulations occur is important, because it shows that there would be no need for a permanent pair bond in an *Anser*

X Branta cross. If a female Canada Goose was forcibly copulated with by a male Greater White-fronted Goose during her laying period, a hybrid could result and be raised by two Canada parents. This would explain why the observed hybrid was not with a mixed-species family.

The rarity of this cross in the wild, as commented on by Mr. Montgomery, is to be fully expected. Hybrids are rare even in the notably promiscuous ducks and are probably more so in the monogamous geese, which hold territories on the breeding grounds and show male mate defense. Also, a cross-generic hybrid would be extremely unusual, but it is clear that the observed hybrid arose from just such a cross. All that I have presented above has further convinced me that I was accurate in my original identification of a hybrid goose found on the Brookfield Zoo grounds on 27-28 November 1994 as the result of a cross between *Branta canadensis interior* and *Anser albifrons frontalis*.

Acknowledgments

I would like to thank Sheryl DeVore for allowing me to respond to Bob Montgomery's questions about the possible origins of the observed hybrid goose, and Roger Reason for comments on the original draft of this paper.

Literature Cited

Bent, Nancy. 1995. Probable *Branta X Anser* hybrid. *Meadowlark* 4: 64-65.

Crawford, R.D. 1984. Goose. In: Mason, I.L. (editor), *The Evolution of Domesticated Animals*. London: Longman Inc.

Ely, Craig R. 1989. Extra-pair copulations in the Greater White-fronted Goose. *Condor* 91: 990-991.

Ely, C.R. and A. X. Dzubin. 1994. Greater White-fronted Goose (*Anser albifrons*). In: Poole, A and F. Gill (editors), *The Birds of North America* No. 131. Philadelphia: The Academy of Natural Sciences, Washington, DC: The American Ornitho-

logists' Union.

Delacour, Jean. 1954. *The Waterfowl of the World, Volume One*. London: Country Life Limited.

Delacour, Jean. 1964. *The Waterfowl of the World, Volume Four*. London: Country Life Limited.

Kortright, Francis H. 1967. *The Ducks, Geese and Swans of North America*. Harrisburg, PA: Stackpole Co.

Palmer, R.S. 1976. *Handbook of North American Birds, Volume 2: Waterfowl (first part)*. New Haven, CT: Yale University Press.

Scott, Peter. 1972. *A Coloured Key to the Wildfowl of the World*. Slimbridge, UK: The Wildfowl Trust.

Trost, Robert E., Donald H. Rusch and Donald H. Orr. 1981. Population affiliation of Canada Geese from six southern refuges. In: *Proceedings of the Annual Conference of the South-eastern Association of Wildlife Agencies* 34: 598-606.

—Nancy Bent
Brookfield Zoo, 8400 West 31st St.
Brookfield, IL 60513

SEASONAL HIGHLIGHTS - Fall Migration 1996

Lake County's Second Black Vulture

On 19 October 1996, I was birding the Lake County lakefront with Alan Stokie Bob Erickson, and Rick Siebert, all experienced birders, and my mother, Janice. After an eventful morning in Waukegan and at Illinois Beach State Park's main unit, we drove to the park's Camp Logan unit. Sand Pond was crowded with fisherman, so we walked east on an old road leading from the parking lot north. By 1:30 p.m. we had nearly reached the beach. While the rest of the group was arguing over an Orange-crowned Warbler and the season's first American Tree Sparrow, I scanned the skies north hoping for migrating hawks. I was immediately rewarded with a large dark raptor flying south toward us. It took several flaps and settled into a slight dihedral, and I figured I had a Turkey Vulture (*Cathartes aura*). Once I put my Tasco 10X50 binoculars on it, though, several more quick flaps and a black head changed my mind. Unfortunately, my next thought was an American Crow (*Corvus brachyrhynchos*). I said as much, and someone replied, "No." The bird continued towards us, and soon its naked black head, relatively short wings, and pale gray outer primaries, contrasting sharply with the inner primaries and wing linings, convinced us all that it was a Black Vulture (*Coragyps stratus*)! It flew nearly overhead and continued its flap-flap-glide flight undeviatingly southward, 50 yards west of the lakeshore.

Although this was my first sighting for Illinois, I have had experience with Black Vultures in Texas and Louisiana. We knew it was a good sighting, but until later, I had no idea how unusual.

Subsequent research turned up one previous sighting for Lake County, a bird found dead in Highland Park on 18 November 1909 (Mlodinow 1984). The only other record that I am aware of for northeastern Illinois is one that was photographed in southwestern Will County on 28 April 1985 (Illinois Birds and Birding 1:81). Interestingly, though, two individuals were reported in Wisconsin this fall, including one in Sheboygan which apparently lingered into early December (*vide* Alan Stokie). At the time, we joked that we must have missed an important record for Wisconsin by a mere mile, as there was nowhere else for the bird to have come from. Be that as it may, we will long remember the day when, as Mom put it, "You've never seen four grown men so excited about a buzzard!"

Literature Cited:

Mlodinow, Steven. 1984. Chicago Area Birds. Chicago Review Press. Chicago IL.

---Paul Sweet
2114 Elisha Ave.
Zion, IL 60099

Swainson's Hawk in Flock of Broad-wings

On 22 September 1996, at the end of a lackluster day of birding, I stopped at the latest frozen custard place in Urbana. Fortunately, my binoculars were still in the car. At about 5 p.m., as I left Jarling's Frozen Custard, I noticed several shadows on the parking lot. Looking up, I saw several Broad-winged Hawks (*Buteo platypterus*) gliding by. Above them was a kettle of another 175 Broad-winged Hawks. Since Urbana is not on any major flyways, ridges or bodies of water, this was an unusually high number.

As the kettle went by, I noticed others. And as I drove home, more Broad-winged kettles appeared. Before I had even made the turn north to drive home, I had already seen over 500 Broad-winged Hawks, about doubling the previous single day total for Urbana. Yet the hawks kept coming. As I arrived home, I noticed a kettle of 125 hawks over my house. By 5:30 p.m., the

thermals began to dissipate and the hawks began gliding out of their kettles and heading into trees in Urbana.

At 5:35 p.m., a kettle of about 50 birds appeared from the east near my house. As I scanned the flock, one bird appeared larger and longer winged, but as the birds milled about, I could not see any distinctive field marks or even be sure about its size. Then the flock began to break up and the individual birds began gliding. One notably larger (about double the bulk of the Broad-winged Hawks) immature hawk glided out of the kettle to within 50 yards of me and only 25 feet above the ground. I noted its heavy, blotchy streaking on the breast and other background color to the underparts characteristic of the immature Swainson's Hawk (*B. swainsoni*). I also noted it had a long finely barred gray-brown tail with a single wider subterminal band. While not as noticeable as in adults, this bird also clearly showed

darker flight feathers contrasting with lighter colored fan wing linings.

Swainson's Hawks, like Broad-winged Hawks, migrate in large flocks. Occasionally they appear in a large flock of Broad-winged Hawks. Interestingly, although no other large flights of Broad-winged Hawks were reported from Illinois in the fall of 1996 and Duluth had fewer than usual Broad-winged Hawks, there were very

large flights in the east. This may have been a flight of hawks that normally passes farther west.

Although Swainson's Hawks bred in Champaign County in the 19th century, there has only been one other recent sighting in Champaign County.

—Robert Chapel

306 1/2 W. California Ave.
Urbana, IL 61801

Pacific and Red-throated Loon Invasion

During the late fall of 1996, a veritable invasion of Red-throated (*Gavia stellata*) and Pacific Loons (*G. pacifica*) occurred along Lake Michigan in Illinois. Most of these birds were seen in Lake and northern Cook Counties, uncharacteristically swimming and feeding close to shore. On 18 November 1996, while searching for Snowy Owls, Bob Hughes found a Pacific Loon in Lake Michigan off the end of Navy Pier in Chicago.

It was a small and rather elegant loon, with a proportionately sized, even-sided bill. There was a sharp, straight division between the dark and light areas in the neck and no white above the eye. The nape was paler than the rest of the head. Also, the bird was a juvenile as evidenced by the pale edges to the back and scapular feathers.

Interestingly, after Hughes' initial discovery, several birders reported seeing two Pacific Loons from Navy Pier. Hughes saw a juvenile Pacific Loon off Montrose Beach on 10 November 1996.

Other Pacific Loon sightings were reported into December from Waukegan and Illinois Beach State Park. Until these sightings this fall, the species was unrecorded along Lake Michigan in Illinois.

According to available literature, the invasion of rare loons in the fall of 1996 was unprecedented. The Chicago Audubon Society's Rare Bird Alert between 1 November and 13 December 1996 reported more than 53 separate observations of Red-throated Loons from Zion in the north to New Buffalo, Michigan. Pacific Loon sightings for the same period totaled 11. Note that these are reports of occurrence and may include sightings on different days of the same bird. The highest single day count of Red-throated Loons together was five from Miller Beach, Indiana, on 9 November (pers. comm. Ken Brock). Two, three, and four individual birds were seen at the same site on numerous days.

Red-throated and Pacific Loons are both rare, but fairly regular visitors to the Midwest, especially during fall migration, with a peak occurrence in mid-November (Brock 1986). High counts of Red-throated Loons have come most often from the Miller Beach area of northwest-

ern Indiana where Brock listed nine on 12 October 1955 and from southeastern Michigan where Mlodinow listed a spring day high count of 18 at Grand Mere on 1 May 1965.

Chicago has had, in the past, only single Red-throated Loon sightings in the fall, all from Lake Michigan and nearly all from the north shore. No Red-throated Loons were seen in the fall of 1992, 1994, or 1995, according to Audubon Field Notes. The same source listed 10 single Lake Michigan sightings in 1993. Meadowlark's Field Notes listed only single birds in 1992 and listed no Red-throated Loon sightings in 1993, 1994, or 1995.

Until the fall of 1996, the Pacific Loon was unreported from Chicago and its surrounding area according to all available records. Bohlen listed 12 records, all immatures and all from lakes located mid to downstate. Mlodinow (1984) listed Pacific Loon as hypothetical in the Chicago area, in the context of Arctic Loon, with which it was once lumped as a single species.

Pacific Loons were present in other parts of the Midwest in the winter of 1992 and 1993 and in the fall of 1994 and 1995. They were absent from the region in the winters of 1994 and 1995 and the fall of 1992 and 1993, according to Audubon Field Notes.

Literature Cited:

Bohlen, H.D., 1989. The Birds of Illinois. Indiana University Press, Bloomington and Indianapolis, IN.

Brock, K.J., 1986. Birds of the Indiana Dunes, Indiana University Press, Bloomington, IN.

Meadowlark Field Notes, Volumes 1-5.

Mlodinow, S., 1984. Chicagoland Birds. Chicago Review Press, Chicago, IL.

National Audubon Field Notes, 1990-1995.

—Robert Hughes

696 W. Irving Park Rd., Chicago, IL 60613

—Christine Williamson

4016 N. Clarendon Ave., # 2N, Chicago, Ill. 60613

birdchris@aol.com

Champaign County's First Rufous Hummingbird

On 6 October 1996, I received a telephone call from Urbana resident, Ernest Walker, who wanted to report a "female Rufous Hummingbird" for inclusion in our local Audubon Society's newsletter field notes. Since there have only been five other records of the Rufous/Allen's superspecies (two confirmed as Rufous), my interest was peaked, but so was my skepticism.

I arranged to visit Walker's yard with Elaine Regehr. We met Walker at 7:15 the next morning. He had already seen the bird once that day. After a five minute wait, the bird flew to the feeder. I was immediately impressed by the amount of rufous on this bird. All the observers noted the extensive rufous wash on the sides and undertail coverts and extensive rufous on the lower back and upper sides above the wings. Through a telescope trained on the bird at 25X, rufous flecking could be seen in the upper back. There was also extensive rufous in the face. There was considerable speckling on the throat, converging into a patch in the center of the throat. This patch reflected orange red in the sun.

We were quickly able to conclude that the bird was either a Rufous (*Selasphorus rufus*) or Allen's Hummingbird (*S. sasin*). The extent of rufous in the upperparts and the throat patch made the initial observers speculate that the bird was more likely an immature male than a female. During this time, the bird never displayed its tail in a way that could lead us to determine the extent of rufous in the outer tail feathers. However, on a subsequent visit, the bird was observed preening its spread tail, revealing a great deal of rufous, especially on the outer rectrices. After observing the bird for 45 minutes, we spread the word, contacting local birders and the Central Illinois Rare Bird Alert. That same day and on 8 and 9 October 1996, the bird was observed by birders from Champaign, Vermilion, Macon, and Sangamon Counties. Several of these birders witnessed the hummingbird display aggressive behavior towards a Ruby-throated Hum-



Rufous Hummingbird, Urbana, Champaign Co. 9 Oct. 1996. Photo by Dennis Oehmke.

mingbird (*Archilocus colubris*) and a Ruby-crowned Kinglet.

Most observers thought the bird was more likely an immature male than a female, but could not be certain. Although photographs were obtained by Helen Parker and Dennis Oehmke, determination as to whether this bird was a Rufous or Allen's Hummingbird could not be ascertained. But, on 25 October, Steve Bailey of the Illinois Natural History Survey, who has a permit to do so, netted the hummingbird and pulled and measured the second and fifth rectrices. The rectrices were then presented to the Illinois Ornithological Records Committee. The measurements and in-hand observations confirmed that this was a female Rufous Hummingbird.

—Robert Chapel
306 1/2 W. California Ave.
Urbana, IL 61801

Kirtland's Warbler in Chicago

On the morning of Friday, 13 September 1996, I decided to bird at Montrose Harbor's "Magic Hedge" in Chicago, since the previous night's winds were strongly from the northwest. A northwest wind tends to compress fall passerine migration along the Lake Michigan shoreline, offering the possibility of viewing thousands of birds. The Montrose Avenue area projects out into Lake Michigan, forming a natural migrant trap, and is arguably Chicagoland's most famous birding hot spot.

Unfortunately, the numbers of birds on this day were somewhat disappointing. After some aimless wandering around the many hedges, I settled down at the bushes southeast of the main hedge area to see what came along. A large, warbler-like bird was perched for a long period of time about 4 feet off the ground, feeding occasionally. It continually pumped its tail up and down, which puzzled me.

The bird had streaking on the yellow flanks and the breast and belly area were a dirty yellow. The back was brownish with light streaking. The bird was obviously not

a Palm Warbler (*Dendroica palmarum*) because it lacked a rusty cap on the head. The face pattern was not strongly patterned as a Prairie Warbler (*D. discolor*). I dismissed it as an immature Magnolia Warbler (*D. magnolia*).

A few minutes later, Bob Hughes, a much more experienced birder, was loudly describing a Kirtland's Warbler (*D. kirtlandii*) from the other side of the same hedge. I went around and saw that the bird Hughes was watching was the same I had seen. After about 45 minutes of feverish excitement, watching this bird, Hughes and I left the hedge to call the Chicagoland Audubon Rare Bird Alert and other local birders. Fortunately, the bird was photographed by at least two individuals.

When we returned, the bird had disappeared, much to the disappointment of the many birders who had interrupted their daily schedules to rush to Montrose to see this rare warbler.

Although the bird was not relocated the next day, the bird was found again on Sunday and viewed by many under even better viewing conditions. The bird's leg



Kirtland's Warbler, immature male, Montrose Magic Hedge, Chicago, 15 Sept. 1996. Photo by Eric Walters.

bands were carefully observed. After a little research with federal agencies, we learned that this was an immature male banded on 15 August 1996 in Ogemaw County in Michigan's Lower Peninsula. Interestingly, the winds on the previous five days had been strongly from the northwest, making flying from Michigan to either Wisconsin or Illinois difficult. Perhaps it migrated westward before the weather system occurred.

The Kirtland's Warbler nests in groves of young jack pines (*Pinus banksiana*) that are between 5 and 15 feet tall. The species also requires a specific soil type, the Grayling Sands, which is important because they nest on the ground and their nests would be flooded if rain water did not drain away quickly in a sandy soil. For this reason, nearly 90% of Kirtland's Warbler nests are in the drainage of a simple stream.

The Kirtland's Warbler has been the focus of much attention in the last 25 years because of its rarity and

special habitat needs. Natural forest fires previously created the conditions the species needed for nesting habitat. When European settlers cleared dense northern forests for agriculture and mining, the warbler benefitted temporarily. Unfortunately, with the opening of the forest, Brown-Headed Cowbirds began nest parasitism which imperiled the nesting success of the Kirtland's Warbler. The trapping of the cowbirds and controlled forest burns by land managers in the last remaining nesting zones in Michigan's Lower Peninsula have allowed the species to make a comeback, with over 700 singing males counted in 1996. The bulk of the nests are in an area 100 miles long and 60 miles wide.

—Wes Serafin
14150 S. 84th Ave.
Orland Park, IL 60462
cmserafin@aol.com

First Painted Bunting Specimen Record for Illinois

On 10 October 1996, as part of our program of monitoring migration through the birds that run into Chicago windows, I checked McCormick Place as Field Museum staff has through the last 19 years. In the pre-dawn light, I picked up a bird that I assumed was a female or young male Indigo Bunting (*Passerine cyanea*). It wasn't until I returned to the museum and saw the greenish back and slight yellow wash to the underparts that I realized the bird was a Painted Bunting (*P. ciris*). The bird is now prepared as a study skin with Field Museum catalogue number 381657; it is an immature male, weighing 15.6 grams, with a high fat level, and testes measuring 1 x .5mm. The specimen is assignable to the subspecies *ciris*, whose normal range is the southeastern U. S. It represents the first specimen record of the species for Illinois. Bohlen (1989) lists Painted Bunting as hypothetical based on four sight records dating from the 1870s through the early 1980s. While all potentially accurate accounts, the documentation for these records was not thorough enough to establish the occurrence of the species in the state. Since the publication of Bohlen's book, Ben Gelman (1994) carefully documented (with an unequivocal photo by Dennis Oehmke) an adult male visiting a feeder in Makanda Township, Jackson County. Gelman also notes the records for adjacent states—four for Minnesota, nine for Wisconsin, five for Michigan, and one for Indiana. Most of these substantiated records are from April and May, with only two from the fall. Spring records

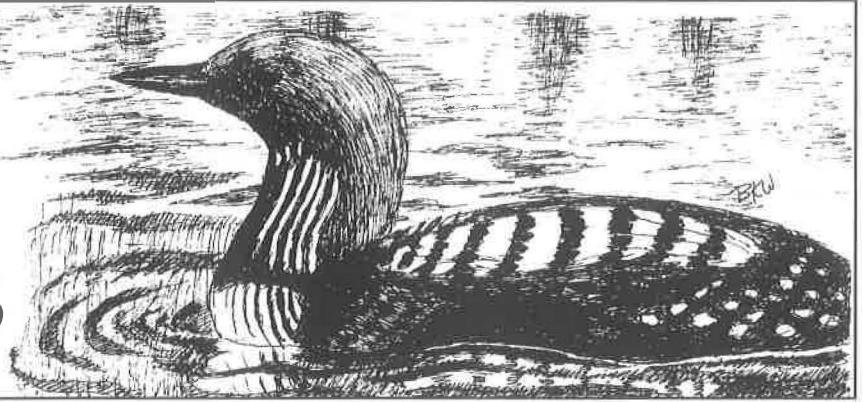
may be explainable by birds overshooting their normal ranges when migrating north. The occurrence of an immature bird this far north of the breeding range in fall is harder to explain. However, in the southwestern U.S., vagrants of this species are predominantly female-plumaged birds recorded in the fall (Phillips et al., 1964). It may be that scarcity of fall records partly reflects the difficulty in separating immature-plumaged birds from Indigo Buntings.

Literature Cited:

- Bohlen 1989. The Birds of Illinois, Indiana University Press, Bloomington, Indiana.
Gelman. 1994, Meadowlark 2: 127-128.
Phillips et.al, 1964, The Birds of Arizona, University of Arizona Press, Tucson, Arizona.
Rosenberg et.al. Birds of the Lower Colorado River Valley, University of Arizona Press, Tucson, Arizona.

—David Willard and Douglas Stotz
Field Museum of Natural History
Roosevelt Rd. at Lake Shore Dr.
Chicago, IL 60605

Field Notes



Field Notes drawing of Pacific Loon by Brian K. Willis.

The 1996 Fall Season

By Robert Chapel

The autumn air has turned crisp with the first hard freeze of the year. Snow flurries are starting to blow. Time to go look at hummingbirds! At least it was true in the fall of 1996. In addition to Champaign County's first Rufous Hummingbird, during a chilly October (see seasonal highlights), there was the amazing **BROAD-BILLED HUMMINGBIRD** that graced a feeder in Trivoli (Peoria County) until November 23, lingering through several snow flurries and freezing temperatures. See story in this issue for more information. In the future, feeder watchers and their birding neighbors should be alert to any hummingbirds that are unusual in timing or appearance (especially considering the occurrence of the Green Violet-ear in nearby Michigan).

If this was the fall for hummingbirds, it was also the fall for jaegers, loons, grebes, and Snowy Owls. An unusual number of jaegers were seen both downstate and along Lake Michigan (while most of the Lake Michigan birds were reported as Parasitic Jaegers, only one was documented as such and the others have been reported as Jaeger, sp.). Most of the downstate birds were documented as Pomarine Jaegers and seen over a number of days. There were unusual numbers of Pacific and Red-throated Loons, Red-necked Grebes, and Western Grebes seen this fall also. By the end of the period, many Snowy Owls had appeared along the Lake Michigan Shore, and a few had made it to downstate locations as well. One observer reported sighting nine Snowys in a single day.

August and September were dryer than usual, although temperatures were moderate. October continued dry, although cool weather came early. This made for comfortable birding. Unfortunately, it did not provide much in the form of migratory waves. Consequently, land birding was spotty. Some places reported a few good migratory waves, while others found few if any good days. While not as spectacular

as last year, hawk flights were moderately good along the lakefront, although the only sizable Broad-winged Hawk flight was in downstate Urbana (which normally doesn't get any).

November was unseasonably cold with snow accumulation on some dates. However, the birding was as brisk as the weather. Not only were there many of the less common loons and grebes, but there were also invasions of the aforementioned Snowy Owls and of Red Crossbills into the northern portion of the state.

Shorebird sightings were concentrated at the traditional shorebird spots along the Illinois River, Rend and Carlyle Lakes, and along Lake Michigan. Waterfowl were also concentrated in these areas, plus other major downstate reservoirs. Numbers at many locations seemed low. Quite ominous was that the least reported Phalarope was Wilson's. It is possible that some are not being reported because they have not traditionally been thought as "significant" as the Red-necked and Red Phalaropes, but veteran shorebirders were reporting single observations as the "only one found." This species deserves close monitoring to see if numbers rebound.

Despite a seemingly rather poor passerine migration, some of the top highlights for the season were the **Kirtland's Warbler** at the Magic Hedge in Lincoln Park, the Varied Thrushes at Lincoln Park and Waukegan (see seasonal highlights), and the **Brewer's Sparrow** at the Bird Sanctuary in Lincoln Park, which lingered through winter. See Vol. 6 No. 3 of Meadowlark for details. Other notable sightings this fall include White-faced Ibis, **Wood Storks**, **Fulvous Whistling Duck**, a **Painted Bunting** specimen (see seasonal highlights this issue), and Black-necked Stilts.

A special thanks is extended to all contributors to this

report, who are listed here in full and by initials following each observation: Cindy Alberico, Louise Augustine, Renee Baade (RBA), Steve Bailey, David Belcher, Nancy Bent, Robert Bezouska (RBe), Richard Biss, Dave Bohlen, Denis Bohm (DBo), John Brandt (JBr), Karin Cassel, Robert Chapel, Elizabeth Chato, Paul Clyne, Robert Danley, Myrna Deaton, Sheryl DeVore, Ralph Eiseman, Josh Engel, Robert Erickson (REr), Carolyn Fields, Robert Fisher (RFi), Matt Fraker, Jim Frazier, Chuck Fuller (CFu), Brad Grover, Phil Haebler, Jeff Hardt, Scott Hickman, Kanae Hirabayashi, Michael Hogg, Larry Hood, Robert Hughes, Barrie Hunt, Cathie Hutcheson, Dave Irons, Dave Johnson, Lee Johnson, Steve Juhlin, Peter Kasper, Dan Kassebaum, Vernon Kleen, John Koch (JKo), Greg Lambeth, Jim Landing, Walter Marcisz, David Mandell, Cynthia McKee (CMc), John

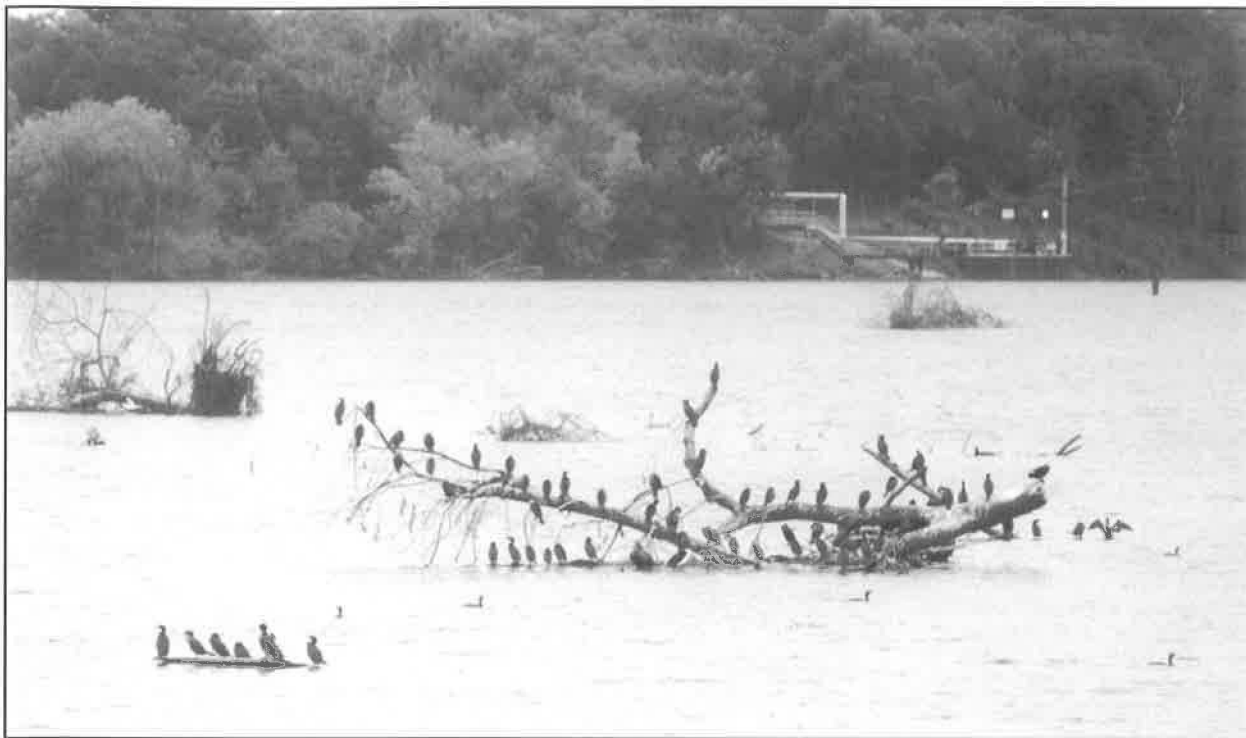
McKee (JMc), John McDaniel (JMI), Lynn McKeon, Keith McMullen, Dan Miller (DMI), David Miller (DMr), Joe Milosevich, Igal Milchtaich, Donna Motherway (DMo), Luis Munoz (LMu), Dennis Oemke, John O'Brien, Helen Parker, Peter Peterson, Jack Pomatto (JPo), John Purcell (JPu), Roger Reason (RRe), Elaine Regehr, Michael Retter, Kevin Richmond, William Rowe, Richard Sandburg, Gerda Schild, Wes Serafin, Darrell Shambaugh, Jim Smith, Muriel Smith, Douglas Stotz, Paul Sweet, Craig Taylor (CTa), Craig Thayer, Jack Van Benthussen (JV), Ernest Walker (EWa), Eric Walters, Alen Welby, Richard Whitton (RWWh), Dave Willard (DWi), Dan Williams, Chris Williamson, Geoff Williamson, Kevin Wright, Rick Wright, Helen Wuestenfeld, Jim Ziebol Waterfowl survey reports by Michelle Georgi (MGe) are aerial survey estimates.

As standard policy, all observers, regardless of experience, must fully document all unusual observations. The Illinois Ornithological Records Committee has designed a new documentation form (available upon request) that should help all observers with the documentation process.

As a printing aide, the following abbreviations have been used throughout this report:

Carl.L	= Carlyle Lake (Clinton, Fayette, & Bond Cos)	ad.	= adult
CBG	= Chicago Botanical Gardens (Glencoe, Cook Co)	Co (s)	= County (ies)
Chi	= Chicago's Lakefront Parks, excluding JP (Cook Co)	subad.	= subadult
Clin.L	= Clinton Lake (De Witt Co)	C.A.	= Conservation Area
CONWR	= Crab Orchard National Wildlife Refuge (Williamson Co)	imm.	= imm.
CNC	= Crabtree Nature Center (Cook Co)	F.P.	= Forest Preserve
ESTL	= East St. Louis, Sauget, & vicinity (St. Clair Co)	yg.	= young
Fermi	= FermiLab at Batavia (Du Page Co)	F.W.A.	= Fish and Wildlife Area
FWMA	= Fishhook Wildlife Management Area (Moultrie Co.)	pr.	= pair
GLPSP	= Goose Lake Prairie S.P. (Grundy Co) & Heidecke L.	L	= Lake
HLCA	= Horseshoe Lake C.A. (Madison Co)	*	= documented record
IBSP	= Illinois Beach State Park (Lake Co)	N.C.	= Nature Center
JP	= Chicago's Jackson Park (Cook Co)	**	= specimen record
KCP	= Kennekuk County Park (Vermilion Co)	N.P.	= Nature Preserve
KFWA	= Kaskaskia F.W.A. (Moultrie Co)	resp.	= respectively
LCal	= Lake Calumet & vicinity (Cook Co)	N.W.R.	= National Wildlife Refuge
LChau	= Lake Chatauqua N.W.R. (Mason Co)	m.ob.	= many observers
LCNP	= La Salle County Nuclear Plant (La Salle Co)	S.F.	= State Forest
LRen	= Lake Renwick (Will Co)	est.	= estimated
LShel	= Lake Shelbyville (Moultrie and Shelby Cos)	S.P.	= State Park
M.Arb	= Morton Arboretum (Du Page Co)	I.O.R.C.	= Illinois Ornithological Records Committee
MFWA	= Middlefork F.W.A. (Vermilion Co)		
MM	= McKee Marsh (Du Page Co)		
MS	= McGinnis Slough (Cook Co)		
MTNWR	= Mark Twain National Wildlife Refuge (Calhoun Co)		
Palos	= Palos Area Forest Preserve, incl. Little Red School House, Saganashkee Slough, etc. (Cook Co)	EA	= Earliest Arrival(s)
Rend L.	= Rend Lake (Franklin & Jefferson Cos)	MC	= Maximum Count(s)
RLCA	= Rice Lake C.A. (Fulton Co)	LD	= Latest Departures(s)
SRSF	= Sand Ridge State Forest		
Sang.L	= Sangchris Lake S.P. (Sangamon and Christian Cos)		
Spfld	= Springfield (Sangamon Co)		
UCCA	= Union County Conservation Area (Union Co)		
Wauk	= Wankegan (Lake Co)		

A number in parentheses () indicates the number of birds observed at a specific location or date.
No number signifies single birds.



Double-crested Cormorants, 600 present at Des Plaines River, Will Co. 25 Sept. 1996. Photo by Joe B. Milosevich.

FIELD NOTES:

THE 1996 FALL SEASON

Red-throated Loon

EA: 30 Oct., Clin.L (*RC); 3 Nov., Highland Park (*DJ), MC: 5, IBSP, 23 Nov. (PS); 3, Glencoe, 4 Nov. (RB). LD: 30 Nov. (imm.), Chi (Navy Pier) (AS); 29 Nov. (ad.), IBSP (AS). Others: 4 Nov., Evanston (IM,m.ob.); 6 Nov. (imm.), Chi (AS); 12-24 Nov., Carl.L (DK,DB); 21-23 Nov., Chi (Montrose) (JPu,*DJ,m.ob.); 23 Nov., Wilmette (RC).

Pacific Loon

EA: 10-14 Nov., Clin.L (GL,m.ob.). Others: 18-28 Nov., **Chi (Navy Pier)** (imm.) but 2 on 19 & 22-24 Dec there (*RH,*m.ob.) - first Cook Co record: 21 Nov., **Chi (Montrose)** (imm.) (*RH,JPu) - one from Navy Pier wandered to here?; 1-10 Dec. (ad.), **IBSP & Wauk** (DMo,RBAS).

Common Loon

EA: 3 Oct. (3), Wilmette (EW et al.); 17 Oct., Decatur (MD). MC: 27, Clin.L, 5 Nov. (MD); 11, Wilmette, 1 Nov. (EW). Seen in Dec.

Pied-billed Grebe

EA: 28 Sep., Wilmette (EW). MC: 200+, Clin.L, 20 Oct. (RC), 155, Barrington, 11 Oct. (CF); 131, CONWR, 21 Oct. (RD). LD: 20 Nov., Chi (EW).

Horned Grebe

EA: 15 Sep, Chi (RB); 21 Sep., Arcola (RC). MC: 126, Spfld, 18 Nov. (DB); 123, CONWR, 22 Nov. (RD); 74, Evanston, 4 Nov. (EW). LD: 24 Nov. (15), LCNP (CMc,JMc).

Red-necked Grebe

EA: 9 Nov., Wauk (JMI); 10 Nov. Carl.L (DBe) LD: 16-20 Nov., Clin.L (GL,RC,m.ob.); 16 Nov., HLCA (KM); 3-7, & 19 Nov., Chi (Montrose) (RE,JPu).

Eared Grebe

EA: **19 Aug.** (winter plumage), Chi (Montrose) (JPu); 10 Sep., Buffalo (Sangamon Co) (DB). MC: 3, MTNWR, 12 Oct. (DB). LD: 25 Nov., Spfld (DB); 10-21 Nov., Wilmette (IM,EW,ph.).

Western Grebe

EA: 4 Nov., Highland Park (DMo,JO,RH); 7 Nov., Lock & Dam 18 (Henderson Co) (*DB et al.); 9 Nov., HLCA (DBe); 11-12 Nov., Clin.L (RS,m.ob.). MC: 3, Clin.L, 14-17 Nov. (MD,RC,EC). LD: 2 Dec (since 22 Nov), Chi (Calumet Park) (DM,DI, m.ob.); 27 Nov., Alton (JV); 24 Nov., LCNP (*CMc,JMc). Others: 16 Nov., UCCA (*DMI,*CH,m.ob.).

American White Pelican

EA: 24 July (6 going north), Evanston (EW), MC: 700+, Spring L (Carroll Co), 29 Sep. (PP); 625, New Boston (Mercer Co), 12 Sep. (LM); 200+, L.Chau, 2 Nov. (RC); 200+, E. Dubuque, 15 Sep. (DW). LD: 6 Nov. (20), Lock & Dam 18 (Henderson Co) (PP); 26 Oct (3), Savannah (EW).

BROWN PELICAN

1-7 Nov. (juv.), Lock & Dam 18 (Henderson Co) (CFu,*m.ob.).

Double-crested Cormorant

EA: 26 Aug., Spfld (DB). MC: 8,000, Carl.L, 10 Oct. (DK); 2,000, L.Chau, 28 Sep. (RC); 2,000, Pool 18 (Carroll Co), 29 Sep. (PP); 600, Channahon, 25 Sep. (JM). LD: Into winter.

NEOTROPIC CORMORANT

27 July - 8 Aug., Jackson Co (DK,DMI,RD-photos).

American Bittern

EA: 14 Sep., Springbrook Prairie F.P. (Du Page Co) (fide JF). LD: 3 Nov., Fulton Co (KW); 31 Oct., Kidd L (Monroe Co) (DK); 19 Oct., IBSP (PS et al.).

Least Bittern

EA: 17 Aug. (female), Lake Co (PS). LD: 6 Sep., Wadsworth (SH).

Great Blue Heron

MC: 200, Carl.L., 3 Sep. (KM); 100, Spfld, 30 Oct. - 2 Nov. (DB). LD (north): 3 Dec. (3 imm.), JP (PC).

Great Egret

EA: 1 July, Cisco (Piatt Co) (RC); 20 Aug., JP (PC). MC: 1,100, SW Jackson Co, 22 Aug. (VK); 500, L.Chau, 31 Aug. (RC); 500, E. Alton, 11 Aug. (DK). LD: 16 Nov. (2), St. Clair Co (KM); 27 Oct., MS (CT).

Snowy Egret

EA: 26-27 July, Colfax (McLean Co) (MR,MF). MC: 70, Madison Co, 31 July (KM). LD: 21 Sep., Carl.L. (KM et al.); 7 Sep., LCal (m.ob.), Others: 10-18 Aug. (2), LCal (WM,CA,m.ob.); 19 Aug., Spfld (DB); 20 Aug. (ad.), Evanston (JE); 26 Aug., Winnebago Co (BG); 3 Sep., Decatur (MD).

Little Blue Heron

EA: 9 July, Spfld (DB); 4 Aug. - 14 Sep. (2 imm.), Shabbona L. S.P. (DS); 5 Aug., Shirland (Winnebago Co) (BG). MC: 104, Jackson Co, 24 Aug. (RD); 100, O'Fallon, 17 Sep. (KM); 12, Spfld, 20 Aug. (DB); 11, Waterfall Glen F.P. (Du Page Co), 4 Sep. (fide JF); 6 (imm.), Pratt's Wayne Woods F.P. (Du Page Co) 9 Aug. - 7 Sep. (JPo,m.ob). LD: 20 Sep., St. Clair Co (KM); 17 Sep., Pratt's Wayne Woods F.P. (JPo), Others (north): 10 Aug. (4-3 imm., 1 ad.) LCal (WM,AS) but 5 present on 17 Aug (m.ob.); 18 Aug. (1 ad., 1 imm.), LCal (CA); 24 Aug., CNC (JMI); 26 Aug. - 9 Sep (2 on 2 Sep.), Shirland (Winnebago Co) (BG); 9 Sep. (5), Lake Co (fide RB).

Tricolored Heron

9 Aug., **Chain-of-Rocks** (Madison Co) (DK,L.A); 22 Aug. (imm.), **Carl.L.** (Fayette Co) (*DB).

Cattle Egret

EA: 17 Aug., Chi (JPu); 29 Aug., Spfld (DB). MC: 300, ESTL, 19 Aug. (KM). LD: 7 Nov., Gladston (Henderson Co) (VK,DB,MD,DK); 2 Nov., L.Chau (RC,GL). Others: 26 Oct., Heyworth (MF).

Green Heron

MC: 7, Wadsworth (Lake Co), 30 Aug. (EW); 5, Carl.L., 11 Aug. (KM). LD: 15 Oct., CNC (CF).

Black-crowned Night-Heron

EA: 16 July, Spfld (DB). MC: 22, (7 ad., 15 imm.), LCNP, 1 Sep. (CMc,IMc), 7, HLCA, 27 Sep. (KM). LD: 17 Nov. (imm.), JPu (PC); 16 Nov., HLCA (KM).

Yellow-crowned Night-Heron

LD: 11 Sep. (imm.), Wheeling (DJ); 9 Aug., Jackson Co (DMI).

White-faced Ibis

LD: 22 Aug., **ESTL** (VK). (note: up to **18** have been reported, but this is an unconfirmed report—fide DK).

'**Plegadis**' Ibis LD: 29 Sep. (ad.), Carl.L. (DK).

WOOD STORK

11-17 Aug. (2 imm.), Wood River (Madison Co) (WR,DK,*m.ob.).

FULVOUS WHISTLING-DUCK

8-9 Aug., Chain-of-Rocks (Madison Co) (*DB,m.ob.).

Tundra Swan

EA: 30 Oct. (ad.), Clin.L (RC); 31 Oct., HLCA (KM). MC: 18, L.Chau, 9 Nov. (DJ).

Mute Swan

MC: 8, Gages L (Lake Co), 2 Nov. (SH); 8, Spring L.C.A., 17 Sep. (VK,DB).

Greater White-fronted Goose

EA: **22 Aug.**, Carl.L. (DB). MC: 45, UCCA, 28 Nov. (RD); 24, Fermi, 20 Oct (PK); 9, Heyworth 2 Nov. (MF). LD: 27 Nov., Spfld (DB); 17 Nov., Durand (Winnebago Co) (BG).

Snow Goose

EA: **11-13 Sep.**, Buffalo Grove (JMI); **12 Sep.** (going south), Wilmette & Chi (JKo & RH); 14 Sep. (blue), Winnetka (fide RB); 14 Sep. (blue), Springbrook Prairie F.P. (JSu); 24 Sep., Spfld & Rochester (DB). MC: 10,000, Rend L, 26 Nov. (RW). (RW).

Ross' Goose

EA: 26 Oct., Heyworth (MF). MC: 7, Baldwin L, 9 Nov. (DB). LD: 17 Nov., LCNP (CMc,IMc).

Canada Goose

EA: 10 Sep. (+), Lake Bluff (PH); 11 Sep. (+ at night), Chi (EW); 20 Sep. (150), Sangamon Co (DB).

MC: 19,000, CONWR, 27 Nov. (RW); 843, JP, 1 Dec. (PC); 550, Spfld, 30 Nov. (DB). (Small Race)—EA: 6 Oct. (8), CBG (JE). MC: 20+, UCCA, 23 Nov. - end of period (RD); 20, Savannah, 26 Oct. (EW).

Wood Duck

MC: 180, Jackson Co, 16 July (summer pop.?) (RD); 150, Lockport, 18 Sep. (JM); 125, Sang.L., 17 Sep. (DB). LD: 27 Nov., Spfld (DB); 27 Nov. (3-2 female & 1 male), LCNP (CMc,IMc).

Green-winged Teal

EA: 20 July (pr.), Deer Creek E. F.P. (JMI); 26 July, Spfld (DB). MC: 7,000, L.Chau, 28 Oct. (MGi), LD: 29 Nov., Spfld (DB).

American Black Duck

EA: 17 Sep., L.Chau (VK); 18 Sep., JP (KC). MC: 9,160, Upper IL R. Valley, 18 Nov. (MGi); 4,100, Lower IL R. Valley, 2 Dec. (MGi).

Mallard

MC: 89,235, Lower IL R. Valley, 18 Nov. (MGi); 72,400, Lower Miss. R. Valley, 2 Dec. (MGi); 69,375, Upper IL R. Valley, 18 Nov. (MGi); 42,070, So. IL, 2 Dec. (MGi); 20,200, LCNP, 17 Nov. (CMc,IMc).

Northern Pintail

EA: 7 Sep., Carl.L. (KM); 11 Sep., Sang.L. (DB); 18 Sep. (female), JP (PC). MC: 26,150, Lower Miss. R. Valley, 28 Oct. (MGi); 16,300, Lower IL R. Valley, 28 Oct (MGi). LD (north): 30 Nov., Winnebago Co (BG).

Blue-winged Teal

EA: 26 July, Spfld (DB). MC: 10,660, Lower IL R. Valley, 30 Sep. (MGi); 5,000, L.Chau, 28 Sep. (RC); 2,055, Lower Miss R. Valley, 30 Sep. (MGi). LD: 16 Nov., CNC (JMI).

Cinnamon Teal

19-20 Oct. (male), **M.Arb area** (fide JF).



Female Ring-necked Duck, Wilmette's Gillson Park, Cook Co. 28 Aug. 1996. Photo by Eric Walters.

Northern Shoveler

EA: 12 Aug., MS (WS); 27 Aug. (4), Rend L. (VK, DB); 30 Aug. (3), Arcola (RC); 30 Aug (3), Spfld (DB), MC: 3,350, Lower Miss. R. Valley, 4 Nov. (MGi); 2,000, L.Chau, 28 Sep. (RC). LD: 5 Nov., JP (KC).

Gadwall

EA: 23 Sep., Spfld (DB), MC: 12,100, Lower Miss R. Valley, 26 Nov. (MGi); 1,000, Clin.L., 30 Oct. (RC); 200, Palos, 3 Nov. (CT).

American Wigeon

EA: 23 Sep. (5), Spfld (DB); 28 Sep. (2), Carl.L. (KM); 29 Sep., JP (PC), MC: 10,500, Lower Miss. R. Valley, 28 Oct. (MGi); 5,475, Lower IL R. Valley, 28 Oct. (MGi). LD (north): 18 Nov. (3), Wauk (SH).

Canvasback

EA: 14 Oct. (3), Rock Cut S.P. (BG); 18 Oct. (4), Spfld (DB); 19 Oct., Carl.L. (KM et al.), MC: 19,850, Upper Miss. R. Valley (19,000 at Keokuk-Nauvoo Pool), 18 Nov. (MGi); 2,050, Lower Miss. R. Valley, 2 Dec. (MGi).

Redhead

EA: 15 Oct. (female), JP (PC); 18 Oct. (2 female), Clin.L. (RC), MC: 2,000, Keokuk-Nauvoo Pool, 12 Nov. (MGi); 72, Spfld, 11 Nov. (DB), LD: 25 Nov. (6), Spfld (DB).

Ring-necked Duck

EA: 28 Aug. (female in molt), Wilmette (EW); 30 Sep. (pr.), Spfld (DB), MC: 7,200, So. IL., 31 Oct. (MGi); 6,000, Upper Miss. R. Valley, 4 Nov. (MGi); 1,425, Carl.L., 28 Oct (KM); 250, Spfld, 31 Oct. (DB), LD: 28 Nov. (8), Spfld (DB); 25 Nov. (5), Rockford (BG).

Greater Scaup

EA: 3 Oct. (100+), Wilmette (EW et al.); 20 Oct., Clin.L. (RC), MC: 555, Wilmette, 31 Oct. (EW), LD: 25 Nov., Spfld (DB).

Lesser Scaup

EA: 29 Sep. (male), JP (PC); 10 Oct. (3), Spfld (DB), MC: 2,450, Carl.L., 28 Oct. (KM); 550, Spfld, 25 Nov. (DB). **Scaup, sp.** MC: 16,150, Upper Miss R. Valley, 4 Nov. (MGi).

Harlequin Duck

EA: 24 Nov.+ (female), Wilmette (RH,m.ob).

Oldsquaw

EA: 2-17 Nov. (male), Carl.L. (DK, DB, KM), MC: 8 (5 males, 3 females), Winnetka, 23 Nov. (RC); 4, Spfld, 26 Nov. (DB), Others: 3-30 Nov., Heyworth (MF); 22 Nov., Loves Park (DW); 16-21 Nov. (female), Carl.L. (DK); 20 & 27 Nov. (pr), Spfld (DB, DO); 23 Nov., Alton (JV); 29 Nov. (male), HLCA (JZ).

Black Scoter

EA: 30 Oct. (female), Clin.L. (RC); 31 Oct. (2), Wilmette (EW), MC: 4, Evanston, 4 Nov. (EW); 3 (female), Clin.L., 3 Nov. (RC). LD: 8 Dec. (2), JP (PC); 24 Nov., Wilmette (EW et al.); 23-24 Nov. (2 female type), Chi (AS, DJ); 23 Nov. (?), Alton (DBe);

14-15 Nov. (imm. male), Carl.L. (DK), Others: 2 Nov. (2 imm.), Clin.L. (MD); 3-7 Nov. (2), Highland Park (DJ,m.ob); 4-7 Nov., Lock & Dam 18 (Henderson Co) (m.ob).

Surf Scoter

EA: 3 Oct. (5), Wilmette (EW,m.ob.); 14 Oct. (2 imm.), Decatur (MD), LD: 24 Nov., Chi (AS); 23 Nov. (2), Alton (DBe), Others: 21 Oct. (female), Chi (Rainbow Beach) (RC); 1 Nov. (imm.), Clin.L. (MD); 8-19 Nov. (2 on 14 Nov.), Spfld (DB); 10 Nov., L.Shel (RC); 23 Nov., Chi (DJ).

White-winged Scoter

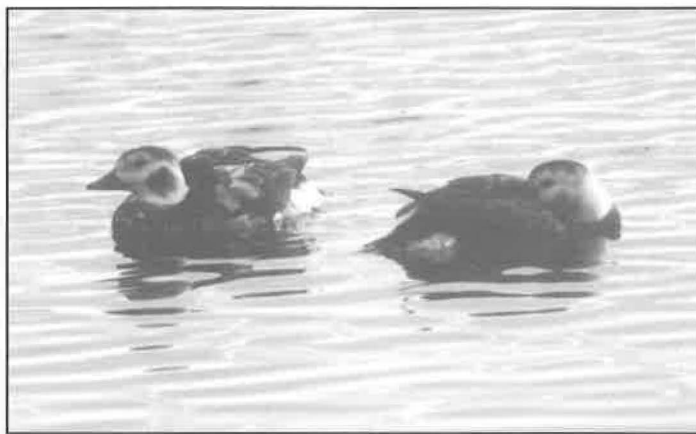
MC: 5, Wilmette, 31 Oct. (EW); 3, Clin.L., 12 Nov. (DB), LD: 24 Nov. (2), Wilmette (EW,RH), Others (downstate): 1 Nov., Spfld (DB).

Common Goldeneye

EA: 27 Oct. (female), LCNP (CMc, JMc); 28 Oct. (2), Wilmette (EW); 31 Oct. (pr.), Spfld (DB), MC: 500+, Evanston-Winnetka, 23 Nov. (RC); 460, Spfld, 27 Nov. (DB).

Bufflehead

EA: 19 Oct., Carl.L. (KM et al.), MC: 7,300, Keokuk-Nauvoo Pool, 2 Dec. (MGi); 5,500, Upper IL R. Valley, 26 Nov. (MGi); 4,400, Duck Creek (Fulton Co), 2 Dec. (MGi); 400, Spfld, 25 Nov. (DB).



Oldsquaws, Springfield, IL, Sangamon Co. 27 Nov. 1996. Photo by Dennis Oehmke.

Hooded Merganser

EA: 27 Aug. (female), Carl.L. (VK, DB), MC: **400**, Rend L., 24 Nov. (RD); 130, Spfld, 24 Nov. (DB); 90, Palos, 11 Nov. (CT), Others: 5 Aug. (3 - summer resident?), Winnebago (BG et al).

Common Merganser

EA: 23 Sep. (3), Joliet (JM); 31 Oct. (pr.), Spfld (DB), MC: 60, Spfld, 29 Nov. (DB).

Red-breasted Merganser

EA: 3 Oct. (6), Wilmette (EW,m.ob.); 30 Oct., Clin.L. (RC), MC: 2,000+, Cook Co lakelfront, 23 Nov. (RC); 100, Carl.L., 17 Nov. (KM); 90, Spfld, 21-23 Nov. (DB).

Ruddy Duck

EA: 19 Sep. (male), Spfld (DB), MC: 700, Carl.L., 28 Oct. (KM); 245, Spfld, 29 Oct. (DB); 35, Lock & Dam 13, 26 Oct. (EW).

Black Vulture

19 Oct., **IBSP**, (*PS, *AS,m.ob.) - first ne. IL record since 1909. See seasonal highlights.

Turkey Vulture

MC: 45, Jersey Co, 1 Oct. (KM); 24, Spfld, 27 Sep. (DB); 16 (summering population?), Palos, 9 Sep. (WS), LD: 3 Nov. (4), Mississippi Palisades S.P. (PS).

Mississippi Kite

MC: 10 (9 ad., 1 imm.), UCCA, 17 Aug. (RD), LD: 27 Aug. (subad.), Jefferson Co (DB, VK); 12-18 Aug., **Normal** (*GL, MF,m.ob.),

Osprey

EA: 13 Aug., Spfld (DB); 14 Aug., Carl.L. (DK), MC: 10, IBSP, 29 Sep. (RE et al.); 6, Mt. Hoy, 8 Sep. (fide JF), LD: 16 Nov. Clin. L. (RC et al.); 3 Nov., Midewin National Tallgrass Prairie (JE).

Bald Eagle

EA: 31 Aug. (2nd summer), RLCA (RC). Others (excluding Illinois & Mississippi Rivers): 24 Sep. - 15 Oct., CNC/Baker's L area (CF,PS); 26-28 Sep. (2nd yr.), Spfld (DB); 18 Oct. (imm.), IBSP (REr et al.); 1 Nov. (2), IBSP (RBe); 3 Nov. (2 imm.), Clin.L (CMc,IMc); 8 Nov. (imm.), IBSP (RBe); 2, Carl.L, all Fall (KM); 17 Nov. (ad. & imm.), Durand (Winnebago Co) (BG); 19 Nov., Fairmont (Vermilion Co) (JS); 24 Nov. (ad.), Durand (BG). Others (at nests): 4 Aug (imm.) & 14 Oct. (ad.), Winnebago Co (BG).

Northern Harrier

EA: 16 Aug. (imm.), CNC (CF). MC: 82, IBSP, 18 Oct. (REr et al.). Others: 10, Wilmette, 31 Oct. (EW).

Sharp-shinned Hawk

EA: 30 Aug., Wadsworth (Lake Co) (EW); 7 Sep., Carl.L (KM). MC: 278, IBSP, 18 Oct. (REr et al.).

Cooper's Hawk

EA: 24 Aug., Evanston (JE); 27 Aug., Rend.L (VK,DB). MC: 16, IBSP, 29 Sep. (AS). Some into winter.

Northern Goshawk

EA: 3 Nov. (imm.), Clin.L (JE); 8 Nov., IBSP (RBe). Others: 3 Dec., Urbana (RC).

Red-shouldered Hawk

EA: 23 Sep., Shirland (Winnebago Co) (BG); 14 Oct. (ad.), Urbana (RC). MC: 6, IBSP, 18 Oct. (REr et al.). LD: 5 Nov. (ad.), CNC (CF).

Broad-winged Hawk

EA: 30 Aug. (ad.), Wilmette (EW); 12 Sep., Jersey Co (KM). MC: 1,000+, Urbana, 22 Sep. (RC,m.ob.). Others: 6 Aug. (imm.), JP (PC) - summer wanderer?

Red-tailed Hawk

MC: 220, IBSP, 31 Oct. (RBe). Others: 14 Oct. ("Kriders"), Warren Co (LH), 3 Nov. ("Harlan's" ad.), UCCA (RD).

Swainson's Hawk

22 Sep. (imm.), Urbana (*RC). See seasonal highlights

Rough-legged Hawk

EA: 18 Oct. (2), IBSP (REr,RH). MC: 4, IBSP, 31 Oct. (RBe).

Golden Eagle

EA: 1 Nov., IBSP (RBe); 10 Nov., L.Shel (RC); 10 Nov., Clin.L (GL); 10 Nov., Rockford (DW). LD: 28 Nov. (subad.), UCCA (RD). Others: 23 Nov. (imm.), UCCA (RD); 25 Nov., Durand & 26 Nov., Cherry Hill (Winnebago Co) (BG).

American Kestrel

EA: 22 Aug. (migrating south), Evanston (EW). MC: 8, Spfld, 12 Aug. (DB).

Merlin

EA: 27 July-3 Aug, IBSP (AS,REr); 2 Sep., IBSP (PS,EW,AS); 7 Sep., Middlefork F.P. (Champaign Co) (RC); 21 Sep., Carl.L (DK et al.). MC: 21, IBSP, 18 Oct. (REr et al.); 10, IBSP, 23 Sep. (EW,IM,JE); 5, Mississippi Palisades S.P., 29 Sep. (PP). LD: 29 Oct., Evanston (JE); 26 Oct., Clin.L (MD); 20 Oct., Kidd I. (Monroe Co) (DK).

Peregrine Falcon

EA: **13 Aug.** (imm. of 'tundrius' race), JP (PC); 21 Sep., Rend L (RD). MC: 16, IBSP, 29 Sep. (RE et al); 3, Mississippi Palisades S.P., 29 Sep. (PP); 3, Mt. Hoy, 29 Sep. (fide JF). LD: 24 Nov. (2), Chi (JPu); 13-23 Nov. (ad.), Alton (DK); 9 Nov., Clin.L (RC). Others: 3, Mt. Hoy, 29 Sep. (fide JF).

Prairie Falcon

EA: 2 Dec., Philo (Champaign Co) (RW).

Wild Turkey

MC: 5, E. Alton, 13 Nov. (DK).

Northern Bobwhite

MC: 15, HLCA, 31 Oct. (KM); 14, Sang.L, 31 Oct. (DB). Others: 9 Nov. (found dead), Rockford (DW).

Yellow Rail

EA: 24 Sep., Chi (Navy Pier) (**IBr) - being eaten by gulls. LD: 16 Oct., Chi (Montrose Harbor) (fide RB).

Virginia Rail

EA: 10 Aug., CONWR (DMI); 12 Aug., Gurnee (PS). LD: 7 Oct., Highland Park (RE).

Sora

EA: 21 Aug. (ad.), JP (PC,KC); 30 Aug. (imm.), Sang.L (DB). LD: 8 Oct. (2), Arcola (MD); 5 Oct. (5), Chi (JPu).

Common Moorhen

MC: 25, Madison Co, 16 Sep. (KM). LD: 29 Sep., sw. Du Page Co (fide JF).

American Coot

EA: 28 Aug., JP (KC); 12 Sep. (10), Spfld (DB); 16 Sep. (14), HLCA (KM). MC: **11,100**, Lock & Dam 13 (Whiteside Co), 26 Oct. (EW); 4,200, Carl.L, 28 Oct. (KM); 2,300, Spfld, 18 Oct. (DB).

Sandhill Crane

EA: 24 Sep. (++), Du Page Co (fide JF); 29 Sep. (5), Carroll & Whiteside Cos (PP); 13-23 Oct. (ad.), Carl.L (DK). MC: 1,225, IBSP, 31 Oct. (RBe); 59, Carl.L, 22 Nov. (DK). Others: 35, Chi, 30 Oct. (JPu).

Black-bellied Plover

EA: 3 Aug., IBSP (AS); 17 Aug. (3), Carl.L (RC). MC: 12, IBSP, 5 Oct. (AS); 10, LChau, 5 Oct. (MD). LD: 8 Nov. (8), Carl.L (DK); 6 Nov., Charleston (BH).

Lesser Golden Plover

EA: 17 July, Decatur (MD); 11 Aug., Carl.L (KM). MC: 50, Momence, 2 Sep. (RC). LD: 5 Oct., Bloomingdale (Du Page Co) (JPo); 5 Oct., IBSP (AS). Others: 17, IBSP, 23 Sep. (EW,IM,JE).

Semipalmated Plover

EA: 13 July, Decatur (MD); 30 July, Grand Tower (Jackson Co). MC: 25, Carl.L, 17 Aug. (RC). LD: 19 Oct. (2), Carl.L (KM et al.).

Piping Plover

EA: 17 Aug., Carl.L (Fayette Co) (RC,MD). LD: 9 Sep., Rend L (*SJ). Others: 24 Aug., Carl.L (Clinton Co) (RC).

Killdeer

MC: 375, Carl.L, 11 Aug (KM); 157, LCNP, 22 Sep. (CMc,IMc); 100, Spfld, 12 Aug. (DB).

Black-necked Stilt

MC: 4 (1 ad., 3 imm.), Chain-of-Rocks (Madison Co), 8-11 Aug. (*DB,DK,m.ob.) & at ESTL (same birds), to 21 Aug. (KM). LD: 22 Aug. (3), ESTL (VK).

American Avocet

EA: 22 Aug., Carl.L (DB); 26 Aug., Spfld (DB). MC: 5, LChau, 2 Nov. (KR et al.). LD: 9 Nov., LChau (DJ). Others: 31 Aug., L.Chau (RC); 4 Sep. (3), Chi (JPu); 11 Sep., Chi (RH); 23 Sep. (2), Rock Cut S.P. (BG); 29 Sep - 2 Nov. (2), Carl.L (DK,m.ob.); 29 Aug., O'Hare Airport (JH).

Greater Yellowlegs

EA: 13 July, Clin.L (RC). MC: 20, New Lenox, 18 Aug. (CA). LD: 6 Nov., Madison Co (KM); 30 Oct., Sangamon Co (DB).

Lesser Yellowlegs

EA: 1 July, Clin.L (RC). MC: 600, L.Chau, 31 Aug. (RC); 80, De Kalb Co, 10 Aug. (DS). LD: 4 Nov., Charleston (BH); 3 Nov. (3), Fulton Co (KW); 3 Nov., CBG (AS).

Solitary Sandpiper

EA: 4 July, ESTL (RC). MC: 10, Deer Creek E. F.P., 20 July & 4 Aug. (JMI). LD: 14 Sep., Carl.L (KM).

Willet

EA: 14 July, Spfld (4) & Sang.L (DB); 18 July, Evanston (EW); 7 Aug., Madison Co (DB). MC: 184, Chi (Montrose), 6 Aug. (RH,JPu,m.ob); 6, Carl.L, 22 Aug. (DB); 3, L.Chau, 31 Aug (RC). LD: 25 Sep., L.Chau (RC); 21 Sep., Arcola (RC).

Spotted Sandpiper

EA: 16 July, JP (PC); 27 July (3), Table Grove (Fulton Co) (KM). MC: 6, Spfld, 10 Aug. (DB); 6, Rend.L, 26 July (RD). LD: 9 Nov., CONWR (RD); 18 Oct., Gurnee (JE).

Upland Sandpiper

EA: 7 July (3), Decatur (RD). LD: 2 Sep., Mokence (RC). Others: 8 Aug. (3), Chain-of-Rocks (Madison Co) (DB); 25 Aug. (3), Mokence (DJ).

Whimbrel

EA: 6 Aug., Chi (RH,JPu); 10 Aug., Carl.L (Clinton Co) (*MD,DK). LD: 24 Aug., Carl.L (Clinton & Fayette Cos) (RC).

Hudsonian Godwit

31 Oct., Sang.L (DB).

Marbled Godwit

EA: 6 Aug., Chi (RH); 9 Aug., Chain-of-Rocks (Madison Co) (DK,LA). MC: 3, Chi, 23 Aug. (RH,EW). LD: 5-14 Oct., L.Cal (RH,*WM,m.ob). Others: 24 Aug., Carl.L (Fayette Co) (RC,m.ob).

Ruddy Turnstone

EA: 21 July (2 ad.), JP (PC); 21 July (ad.), IBSP (AS); 11 Aug., Carl.L (KM). MC: 6, Rend.L, 17 Aug. (DMI); 4, Chi, 6 Aug. (RH). LD: 5 Sep. (imm.), Chi (EW); 3 Sep., Carl.L (KM).

Red Knot

EA: 31 Aug. (2 imm.), L.Cal (WM); 1 Sep., Hl.CA (DK,WR). LD: 29 Sep., LCNP (CMe,JMC). Others: 2 Sep., Mokence (RC). Scarce.

Sanderling

EA: 13 July, Spfld (DB); 19 July (8 ad.), JP (PC); 27 July, Rend.L (DMI). MC: 47 (ad.), JP, 27 July (PC); 44, RCLA, 25 Sep. (LA,KR,RC). LD: 2-6 Dec., Chi (JPu); 8 Nov. (2), Chi (JPu). Others: 22 Oct. (3), Barrington (CF).

Semipalmated Sandpiper

EA: 7 July (2), Heyworth (MF). MC: 100, Chi, 7 Aug (RH); 60, Carl.L, 3 Sep. (KM). LD: 31 Oct., Wilmette (EW).

Western Sandpiper

EA: 17 July, Decatur (MD); 18 July, Chi (RH,KH); 1 Aug. (2), Jackson Co (KM). MC: 7, Carl.L, 24 Aug. (RC). LD: 19 Oct., Carl.L (KM).

Least Sandpiper

EA: 2 July, Spfld (DB); 4 July, ESTL (RC). MC: 500+, Carl.L, 24 Aug. (RC). LD: 28 Oct., Carl.L (KM); 27 Oct., LCNP (CMe,JMc).

White-rumped Sandpiper

EA: 24 Aug., Carl.L (Clinton Co) (RC); 24 Aug. (2), Deer Creek E. F.P. (JMI). LD: 18 Oct., Gurnee (JE).

Baird's Sandpiper

EA: 28 July (2), Deer Creek E. F.P. (JMI); 1 Aug., Spfld (DB); 10 Aug., Granite City (RC). MC: 13, L.Cal, 18 Aug. (WM); 5, Carl.L, 17 Aug. (RC); 5, Deer Creek E. F.P., 24 Aug. (JMI). LD: 30 Oct. (2), Carl.L (DK); 28 Oct., Rock Cut S.P. (BG).

Pectoral Sandpiper

EA: 1 July, Cisco (Piatt Co) (RC). MC: 200, Carl.L, 11 Aug. (KM). LD: 23 Nov., Wilmette (JE); 19 Nov., New Athens (St. Clair Co) (DK).

Purple Sandpiper

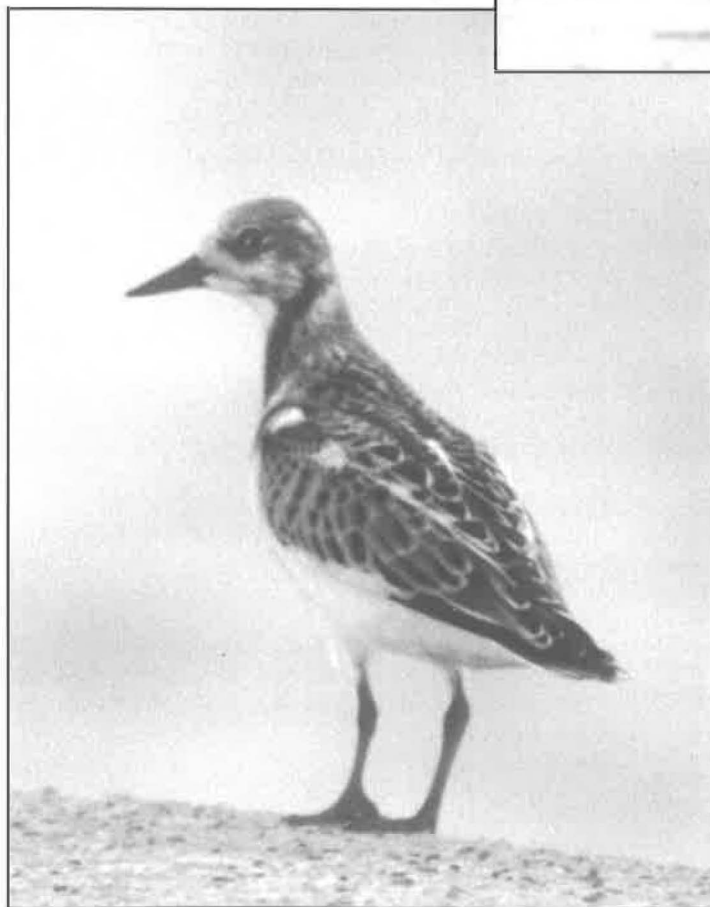
EA: 22-23 Nov., Wauk (CT,*PS).

Dunlin

EA: 14 Sep., Carl.L (KM); 22 Sep., Chi (RH). MC:



Purple Sandpiper, Waukegan Municipal Beach, Lake Co. 22 Nov. 1996. Photo by Craig Thayer.



Ruddy Turnstone, immature, Montrose Harbor, Chicago. 5 Sept. 1996. Photo by Eric Walters.

400, Carl.L., 30 Oct. (DK); 50, Clin.L., 30 Oct. (RC). LD: 7 Dec., Wauk (AS).

Stilt Sandpiper

EA: 14 July, Champaign (RC); 27 July, Rend.L (DMI), MC: 300, L.Chau, 31 Aug. (RC); 250, Carl.L., 10 Aug. (DK, MD). LD: 28 Oct. (11), Carl.L. (KM et al.); 5 Oct., Bloomingdale (Du Page Co) (JPo). Others: 10, O'Hare Airport, 1 Sep. (RB)

Buff-breasted Sandpiper

EA: 10 Aug. (2), HLCA (MD et al.). MC: 20, Boone Co, 20 Aug. (BG); 12, Momence, 2 Sep. (RC); 11, Carl.L., 17 Aug. (MD). LD: 23 Sep., Decatur (MD). Others: 25 Aug., IBSP (AS); 26 Aug. (2), Chi (RH).

Short-billed Dowitcher

EA: 7 July, Heyworth (MF), MC: 25, Carl.L., 17 Aug. (RC); 21, JP, 22 Aug. (PC). LD: 21 Sep. (8), Carl.L. (KM et al.).

Long-billed Dowitcher

EA: 24 Aug., FWMA, (RC). MC: 75, L.Chau, 28 Sep. (RC). LD: 27 Oct., Gurnee (DJ); 19 Oct., Carl.L. (KM et al.); 17 Oct., Spfld (DB), Others: 5-10 Oct., LCal (m.ob).

Common Snipe

EA: 17 Aug., Deer Grove E. F.P. (CF); 17 Aug., Spfld (DB). MC: 150, L.Chau, 7 Nov. (VK et al.). LD: 3 Nov., Fulton Co (KW).

American Woodcock

EA: 11 Oct., JP (GS). LD: 31 Oct., Wilmette (EW); 31 Oct., JP (KC).

Wilson's Phalarope

EA: 4 July, ESTL (RC); 13 July, Decatur (MD). LD: 21 Sep., Carl.L. (KM et al.); 21 Sep., Rend.L (RD). Very scarce this Fall - the least reported Phalarope species! This bird may be in trouble and bears further monitoring.

Red-necked Phalarope

EA: 18 Aug. (3), LCNP (CMc, JMc); 22 Aug., Carl.L. (DB). MC: 6, L.Chau, 2 Sep. (DK, MD).

Red Phalarope

EA: 30 Sep., Carl.L. (*JV); 6 Oct., Areola (RC). LD: 17-21 Nov., Wauk (*DJ, m.ob). Others: 14 Oct., Carl.L. (DK).

Parasitic Jaeger

20 Nov., Chi (Montrose) (*RH).

Pomarine Jaeger

EA: 25 Sep., Alton (*JV). LD: 1 Dec., Clin.L (De Witt Co) (*RC). Others: 5 - 26 Nov. (2 on 16 Nov.), Carl.L. (*DB, *DMI, DK, m.ob.); 8-22 Nov., 15-26 Nov., & 26 Nov. (3 imm.), Spfld (*DB, m.ob.); 23 Nov., Alton (DBe).

Jaeger, sp.

EA: 8 Sep., Chi (Montrose) (RH); 14 Sep., Evanston (RC); 25 Sep. (reported as Pomarine), Alton (JV); 29 Sep., Greene Valley F.P. (reported as a jaeger sp.) (fide JF); 21 Oct. (reported as imm. Parasitic), Evanston (JE); 24 Nov. (2), Chi (Montrose) (*GW, CW, JPu); 24 Nov. (reported as ad. Parasitic), Wilmette (RH, AS); 23 Nov. (reported as Pomarine), Alton (DBe). Given the difficulty in identifying imm. Jaegers, all undocumented birds are reported as Jaeger, sp.

Laughing Gull

EA: 17 Aug., Granite City (RC); 20 Aug., Spfld (DB). LD: 13 Nov. (ad.), Alton (DK). Others: 24 Aug., FWMA (RC); 24 Aug., Carl.L. (DB); 2 Sep. (ad.), Rend.L (RD); 2-18 Sep., Chi (RC, JPu, m.ob).

Franklin's Gull

EA: 23 July, Carl.L. (DK); 27 July, IBSP (AS); 28 July, Spfld (DB). MC: 225, CONWR, 24 Oct. (RD); 108, Spfld, 29 Oct.

(DB). LD: 17 Nov. (1st winter), CONWR (RD); 9 Nov., L.Chau (DJ); 1 Nov. (ad.), JP (PC).

Little Gull

EA: 23 Oct. - 1 Dec. (ad.), Clin.L. (*RC, m.ob.).

Bonaparte's Gull

EA: 12 Aug. (imm.), Spfld (DB); 6 Sep. (ad.), Evanston (EW). MC: 4, 200, LCNP, 27 Oct. (CMc, JMc); 450, Carlyle, 17 Nov. (KM); 400, Spfld, 11 Nov. (DB).

Ring-billed Gull

EA: 4 July, L Evergreen (McLean Co) (MF). MC: 6,000, Carl.L. 11 Nov. (DK); 796, JP, 11 July (PC).

Herring Gull

EA: 15 July, L Bloomington (MF). MC: 600, LCal, 10 Nov. (WM).

California Gull

10 Nov., LShel (*RC).

Thayer's Gull

EA: 18 Oct. (1st yr.), Wilmette (JE); 30 Oct. - 18 Nov. (1st winter), Carl.L. (DK). Others: 1-2 Nov. (ad.), JP (PC); 9 Nov. (2 ad.), 16 Nov. (1 ad. & 1 imm.), & 30 Nov. (ad.), Mallard Lake F.P. (JPo); 22 Nov., Chi (DS), 24 Nov. (ad.), Wilmette (EW); 28 Nov. (imm.), Wilmette (AS, DJ).

Iceland Gull

EA: 24 Nov. (1st yr.), JP (PC).

Lesser Black-backed Gull

EA: 22 Sep. - 10 Oct. (1st winter), Carl.L. (WR, DK, m.ob.). Others: 25 Sep., Alton (JV); 28 Sep. (ad.), L.Chau (RC); 4 Oct. (3rd yr.), Chi (GW, JPu); 1-11 Nov. (3rd yr.), Spfld (DB); 3 Nov. (ad.), Highland Park (DJ); 3-23 Nov., Chi (JPu, AS, DJ, m.ob.); 11 Nov. (3rd winter), Carl.L. (DK); 16 Nov., Alton (DBe); 20 Nov. (ad.), Chi (EW); 22 Nov. (3rd winter), Granite City (JZ); 24 Nov., Rend.L (RD).

Glaucous Gull

EA: 14-16 Nov. (1st yr.), Cherry Hill (Winnebago Co) (BG).

Great Black-backed Gull

EA: 23 Sep. (3rd winter), Wauk (EW, IM, JE-ph.); 29 Sep. (ad.), Whiteside Co (*PP et al.). Others: 19-27 Oct. (ad.), Wauk (AS, JM1); 20 Oct. (2nd winter), Clin.L. (RC). 'Dark-mantled' gull: 23 Nov., Highland Park (DJ et al.).

Black-legged Kittiwake

EA: 23 Nov. (imm.), Chi (CF); 23 Nov. - 1 Dec. (imm.), Clin.L. (MD, m.ob.). MC: 3 (imm.), Wilmette/Evanston, 24 Nov. (RH, AS). Others: 25 Nov., Chi (DS).

Sabine's Gull

EA: 16 Sep. (imm.), Chi (*IM et al.); 18 Sep., Carl.L. (DK). MC: 4, Carl.L., 21-28 Sep. (MD, KM, DK, DB). Others: 21 Sep., L.Shel (RC).

Caspian Tern

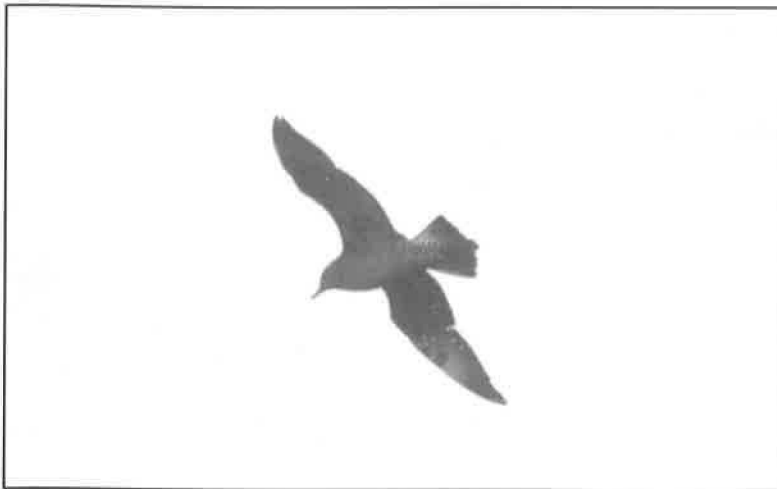
EA: 9 July (7), JP (PC); 14 July, Spfld (DB); 16 July (5), Jackson Co (RD). MC: 82, Evanston, 20 Aug. (JE); 15, Carl.L., 3 Sep. (KM). LD: 10 Oct., Chi (JE); 2 Oct., Spfld (DB).

Common Tern

EA: 18 July (2 ad.), JP (PC); 20 July (ad.), Spfld (DB); 23 July (3), Carl.L. (DK). LD: 28-31 Oct. (imm.), Wilmette & Evanston (EW, JKo-ph.).

Forster's Tern

EA: 17 June, Spfld (DB); 1 July, Clin.L. (RC); 13 July, Carl.L. (DI). MC: 54, Evanston, 20 Aug. (JE); 52, Rend.L., 31 Aug. (RD). LD: 1 Nov., Spfld (DB); 28 Oct., Carl.L. (DK); 26 Oct., Wilmette (RC).



Pomarine Jaeger, Springfield, Sangamon Co. 16 Nov. 1996. Photo by Dennis Oehmke.

Least Tern

LD: 7 Aug., HLCA (DB).

Black Tern

EA: 24 June, Spfld (DB). MC: 50, Carl.L., 22 Sep. (DK). LD: 2 Oct., Spfld (DB).

Rock Dove

MC: 231, JP, 12 Nov. (PC).

Mourning Dove

EA: 6 Sep. (4), Evanston (EW). MC: "hundreds", Chi area, 7-8 Sep. (Chi Tribune, fide EW); 160, SW Jackson Co, 22 Aug. (VK); 150, Spfld, 15 Sep. (DB).

Black-billed Cuckoo

EA: 15 Aug., Spfld (DB). LD: 20 Oct., Clin.L (RC, GL); 29 Sep., M.Arb (fide JF).

Yellow-billed Cuckoo

EA: 29 Aug., Wilmette (EW). MC: 7, Spfld, 5 Aug. (DB). LD: 20 Oct., Clin.L (RC).

Barn Owl

30 Sep. (nest site), Union Co (KM); 8 Nov., Chi (Montrose) (KH,JPu,m.ob.).

Great Horned Owl

MC: 5, Spfld, 17 Sep. (DB). Others: 4 Nov-14 Dec., Chi (Bird Sanctuary) (JPu,EW,m.ob.).

Snowy Owl

EA: 12 Nov., JP (PC); 12 Nov., Chi (Montrose) (JPu). MC: 9, Chi, 23 Nov. (*DJ). Others: 17 Nov. (imm.), LCNP (CMc, JMc); 26 Nov., Danville (JS, m.ob.); 6, Chi (Montrose), 27 Nov (m.ob.). Total birds is easily in excess of the maximum count - good flight.

Barred Owl

MC: 3, Spfld, 17 Sep. (DB).

Long-eared Owl

EA: 6 Nov., Woodstock (RBa).

Short-eared Owl

EA: **20 Sep.**, Chi (RH,JPu); 3 Oct., Wilmette (EW et al.); 4 Oct., Chi (JPu). MC: 7, IBSP, 19 Nov. (PS,AS); 6, Chi, 30 Oct. (JPu,KH). Others: 6 Nov., Homer (JS).

Northern Saw-whet Owl

EA: 21 Oct., Chi (DS). Others: 10 Nov., Fulton Co (KW); 12 Nov., Allerton Park (Piatt Co) (RC).

Common Nighthawk

MC: 329, JP, 22 Aug. (PC). LD: 11 Oct., Carl.L.(DK); 6 Oct., Spfld (DB); 2 Oct., Orland Park (WS).

Whip-poor-will

LD: 19 Oct., Douglas-Hart Nature Ctr. (Coles Co) (BH et al.).

Chimney Swift

MC: 500, CONWR, 16 Sep. (RD); 488, JP, 15 Sep. (PC). LD: 17 Oct. (50), Spfld (DB); 15 Oct. (5), Evanston (JE).

Ruby-throated Hummingbird

EA: 3 Aug., Wadsworth (Lake Co) (PS); 18 Aug., Urbana (RC). MC: 6, Spfld, 3 Sep. (DB). LD: 12 Oct., Urbana (RC, KM); 30 Sep., Chi (JPu).

RUFIOUS HUMMINGBIRD

6-25 Oct. (female or imm. male), Urbana (Ewa,*RC,ER-ph/banded). See seasonal highlights.

BROAD-BILLED HUMMINGBIRD

7-23 Nov., Trivoli (Peoria Co) (VK,*m.ob.-photos). 1st State Record. See article on page 42.

Red-headed Woodpecker

EA: 22 Aug. (imm.), JP (KC). MC: 27 (in 2 hrs.), Greene Co, 30 Sep. (DB). LD: 25 Oct. (imm.), Chi (EW,m.ob.).

Red-bellied Woodpecker

MC: 11, Spfld, 4 Nov. (DB).

Yellow-bellied Sapsucker

EA: 14 Sep. (female), JP (PC); 23 Sep. (imm.), Spfld (DB). MC: 5, Spfld, 8 Oct. (DB). Others: 20-25 Aug., Chi (Bird Sanctuary) (JPu,LMu,m.ob.) - summer wanderer?

Downy Woodpecker

MC: 10, Spfld, 3 Sep. & 21 Nov. (DB); 8, JP, 11 Aug. (PC).

Hairy Woodpecker

MC: 7, Spfld, 3 Sep. (DB).

Northern Flicker

EA: 18 Sep. (10), JP (PC). MC: 19, Spfld, 3 Oct. (DB); 16, JP, 19 Sep. (PC); 13, Carl.L., 6 Oct. (KM). LD (north): 20 Nov., Chi (EW).

Pileated Woodpecker

MC: 5, Pomona (Jackson Co), 30 Sep. (KM); 4, Spfld, 26 Aug. & 8 Sep. (DB).

Olive-sided Flycatcher

EA: 16 Aug. (2), Spfld (DB); 16 Aug., Evanston (EW). LD: 24 Sep., Spfld (DB); 23 Sep., IBSP (EW,IM,JE).

Eastern Wood-Pewee

EA: 16 Aug., Evanston (EW). MC: 13, Spfld, 8 Sep. (DB); 8, Carl.L., 21 Sep., (KMet al.), LD: 9 Oct., Spfld (DB); 9 Oct., JP (KC).

Yellow-bellied Flycatcher

EA: 14 Aug., JP (PC); 15 Aug., Spfld (DB). MC: 3, Spfld, 1 & 5 Sep. (DB). LD: 25 Sep., Spfld (DB); 25 Sep., Zion (PS).

Alder Flycatcher

EA: 26 Aug., Spfld (DB). LD: 24 Sep., Spfld (DB).

Willow Flycatcher

EA: 23 Aug., Chi (EW). MC: 3, IBSP, 2 Sep (EW). LD: 21 Sep. (2), Carl.L. (KM et al.). "Trails"—LD: 16 Sep., JP (PC).

Least Flycatcher

EA: 20 July, JP (PC); 30 July, Spfld (DB). MC: 3, Spfld, 26 & 30 Aug. & 3 Sep. (DB). LD: 5 Oct. (2), Chi (EW et al.).

Eastern Phoebe

EA: 19 Sep., JP (PC). MC: 9, Spfld, 18 Oct. (DB); 6, Carl.L, 23 Oct. (DK). LD: 2 Dec., Lincolnwood (RE).

Great-crested Flycatcher

EA: 24 Aug., JP (PC et al.). MC: 5, Spfld, 3 Sep. (DB) LD: 22 Sep., JP (KC).

Western Kingbird

LD: 26 Aug., Evanston (IM); 9 Aug., ESTL (nest area) (DK).

Eastern Kingbird

MC: 55, Clin.L, 18 Aug. (RC); 20, Carl.L, 3 Sep. (KM); 13, JP, 7 Aug. (PC). LD: 28 Sep., L.Chau (RC); 28 Sep., Clinton Co (KM, DB).

Horned Lark

EA: 18 Sep. (6), JP (PC); 23 Sep., IBSP (EW,IM,JE). MC: 100, Bond Co., 17 Nov. (KM); 44, Sangamon Co, 17 Oct. (DB).

Purple Martin

EA: 18 July, JP (PC). MC: 300+, LShel, 23 July (RC); 155, Evanston, 12 Aug. (EW); 80, Calhoun Co, 31 July (KM); 60, Spfld, 9 Aug. (DB). LD: 14 Sep., JP (PC). Numbers down throughout state.

Tree Swallow

EA: 26 July (12), Sang.L (DB). MC: 50,000, L.Chau, 28 Sep. (RC); 10,000, Carl.L, 12 Oct. (WR). LD: 16 Nov., UCCA (DMI); 23 Oct. (6), Bushnell (McDonough Co) (LH). Others: 21 Sep. (albino). FWMA (RC).

Northern Rough-winged Swallow

EA: 20 July, JP (PC). MC: 3,000, MTNWR, 22 Sep. (DB). LD: 11 Oct., Charleston (BH); 1 Oct. (125), Calhoun Co (KM).

Bank Swallow

EA: 10 July (8), Spfld (DB); 20 July, JP (PC). MC: 180, Spfld, 30 July (DB); 145, LCal, 19 Aug. (WS). LD: 23 Sep., Spfld (DB).

Cliff Swallow

EA: 5 July (2), Spfld (DB); 27 July (2), Lockport (JM). MC: 130, Spfld, 21 Aug. (DB); 80, Table Grove (Fulton Co), 27 July (KM). LD: 27 Sep., Buffalo (Sangamon Co) (DB).

Barn Swallow

MC: 188, JP, 20 Aug. (m.ob.); 75, Carl.L, 21 Sep. (KM et al.); 55, Spfld, 27 Sep. (DB). LD: 29 Oct., Carlyle (DK).

Blue Jay

EA: 24 Aug. (6), Evanston (EW). MC: 340 (in 2 hrs.), Greene Co, 30 Sep. (DB); 187, IBSP, 23 Sep. (EW,IM,JE).

Fish Crow

MC: 40, Jackson Co, 16 July (summer record?) (RD). LD: 30 Aug., Monroe Co (DK).

American Crow

MC: 200, St. Clair Co, 20 Nov. (KM); 129, JP, 4 Dec. (PC).

Black-capped Chickadee

MC: 40, M.Arb., 20 Sep (EW); 24, Spfld, 5 Sep. (DB).

Tufted Titmouse

MC: 18, Spfld, 5 Aug. & 5 Sep. (DB).

Red-breasted Nuthatch

EA: 15 Sep., JP (PC); 12 Oct., Urbana (RC). LD: 23 Nov.,

Wauk (PS). Few records.

White-breasted Nuthatch

MC: 10, Spfld, 13 Nov. (DB).

Brown Creeper

EA: 30 Sep., Rock Cut S.P. (BG); 9 Oct., Spfld (DB); 11 Oct., Pomona (Jackson Co) (DK). MC: 7, Spfld, 27 Nov. (DB); 5, CNC, 6 Nov. (JMI). LD (north): 11 Dec., JP (PC)

Carolina Wren

MC: 7, Spfld, 1 Sep. & 7 Oct. (DB). Others (north): 15 Sep., Naperville (fide JF); 16 Sep., Chi (KH et al.); 18 Sep., Palos (CT).

Bewick's Wren

EA: 6 Oct., Urbana (RC).

House Wren

MC: 14, Spfld, 15 Sep. (DB). LD: 18 Nov. (banded), Rockford (BG et al.).

Winter Wren

EA: 21 Sep., JP (KC); 24 Sep., Spfld (DB). MC: 9, JP, 9 Oct. (PC); 7, Spfld, 8 Oct. (DB). LD (north): 19 Nov., Chi (JPu).

Edge Wren

EA: 12 Sep., Chi (DM). MC: 3, JP, 16 Sep. (PC). LD: 3 Nov., M.Arb (DS).

Marsh Wren

EA: 12 Sep., Chi (DM); 28 Sep., Carl.L (KM). LD: 28 Oct., Carl.L (DK); 24 Oct., Chi (JPu). Others: 16 Aug., JP (PC) - summer wanderer?

Golden-crowned Kinglet

EA: 18 Sep., JP (PC). MC: 16, JP, 5-6 Oct. (PC); 14, Spfld, 21 Oct. (DB). LD: 23 Nov. (female), Spfld (DB); 23 Nov. (2), JP (PC).

Ruby-crowned Kinglet

EA: 15 Sep. (5), Half Day F.P. (Lake Co) (JMI); 18 Sep., Spfld (DB); 21 Sep., Carl.L (KM et al.). MC: 32, Spfld, 27 Oct. (DB). LD: 26 Nov. (male), Spfld (DB); 18 Nov., Rockford (BG).

Blue-gray Gnatcatcher

EA: 2 Aug., IBSP (PS). MC: 4, Spfld, 3 Sep. (DB). LD: 5 Oct. (2), Clin.L (RC).

Eastern Bluebird

MC: 60, Clin.L, 23 Oct. (RC); 11, IBSP, 23 Sep. (EW,IM,JE). LD: 3 Dec. (2), Woodstock (RBa).

Veery

EA: 26 Aug., Spfld (DB). LD: 24 Sep., Spfld (DB); 24 Sep., JP (PC). Others: 23 July, JP (PC) - summer wanderer?

Gray-cheeked Thrush

EA: 24 Aug., CNC (JMI); 30 Aug., Urbana (RC). LD: 7 Oct., Spfld (DB); 6 Oct., Zion (PS).

Swainson's Thrush

EA: 24 Aug. (2), Evanston (EW); 24 Aug., JP (PC); 26 Aug., Spfld (DB). MC: 40, Urbana, 7 Sep. (RC); 12, JP, 25 Sep. (PC). LD: 11 Oct., JP (KC); 14 Oct., Sang.L (DB).

Hermit Thrush

EA: 14 Sep., Chi (RC). MC: 75, Chi, 12 Oct. (CA); 11, Spfld., 25 Oct. (DB). LD: 17 Dec., JP (KC).

Wood Thrush

EA: 7 Aug., Wauk (PS). MC: 4, Spfld, 19 Sep. (DB). LD: 7 Oct., Spfld (DB); 3 Oct., JP (PC).

American Robin

MC: 145, Spfld, 20 Oct. (DB); 86, JP, 8 Aug. (PC).

Varied Thrush

25-27 Oct. (female), Chi (Lincoln Park) (**KH,m.ob.), 24 Nov.-into Dec.(male), Wauk (fide RB). See seasonal highlights next issue for account of Waukegan Varied Thrush seen by many observers.

Gray Catbird

EA: 19 Sep., Skokie Lagoons F.P. (EW). MC: 18, Spfld, 24 Sep. (DB). LD: **24 Nov.**, JP (PC); 12 Nov., Spfld (DB).

Northern Mockingbird

MC: 11, Spfld, 10 Aug. (DB).

Brown Thrasher

EA: 19 Sep., Skokie Lagoons F.P. (EW). LD: 4 Nov., Spfld (DB).

American Pipit

EA: 13 Sep., IBSP (EW); 14 Sep. (2), Chi (RC); 21 Sep. (2), Carl.L (KM et al.). MC: 40, Spfld, 11 Nov. (DB); 29, IBSP, 23 Sep. (EW,IM,JE); 20, Carl.L, 12 Oct. (WR), LD: 24 Nov. (15), Spfld (DB); 17 Nov., LCNP (CMC, JMc); 14 Nov., Chi (JPu et al.).

Cedar Waxwing

EA: 9 Aug. (16), JP (PC). MC: 300+, Evanston, 8 Sep. (EW); 200, Carl.L, 16 Nov. (DK), LD: 24 Nov. (4), Wilmette (JE); 24 Nov. (6), O'Fallon (KM).

Northern Shrike

EA: 18 Oct. (imm.), Shirland (Winnebago Co) (LJ). Others: 1 Nov., Chi (DWi, m.ob.).

Loggerhead Shrike

EA: 15 Sep., Champaign (RC). LD: 19-20 Nov., Bardolph (McDonough Co) (LH).

European Starling

MC: 2,800, DuPage Co, 15 Sep. (DS).

White-eyed Vireo

MC: 3, Spfld, 1 & 21 Sep. (DB). LD: 4 Oct., Sang.L (DB).

Bell's Vireo

LD: 4 Sep. (male), Sang.L (DB).

Solitary Vireo

EA: 21 Sep., Sang.L (DB). MC: 3, Spfld, 29 Sep. & 14 Oct. (DB); 2, Evanston, 9 Oct. (EW). LD: 28 Oct., Spfld (DB).

Yellow-throated Vireo

EA: 8 Sep., Wauk (PS), LD: 15 Oct., Barrington (CF).

Warbling Vireo

EA: 29 Aug., Evanston (IM). MC: 12 (summer pop.), JP, 9 Aug. (PC); 3, Spfld, 8 & 11 Sep. (DB). LD: 29 Sep., Carlyle (DK); 27 Sep., JP (KC).

Philadelphia Vireo

EA: 30 Aug. (3), Urbana (RC). MC: 6, Spfld, 16 Sep. (DB), LD: 13 Oct., Thatcher Woods F.P. (Cook Co) (DS).

Red-eyed Vireo

EA: 29 Aug., Evanston (EW). MC: 13, Spfld, 8 & 11 Sep. (DB). LD: 9 Oct., Chi (DS); 8 Oct., Spfld (DB).

Blue-winged Warbler

EA: 15 Aug. (male), Evanston (EW); 26 Aug., Spfld (DB). LD: 19 Sep. (male), Spfld (DB).

Golden-winged Warbler

EA: 17 Aug. (possibly "Brewster's"), Sangamon Co (DB). MC: 4, Spfld, 6 Sep. (DB); 4, JP, 15 Sep. (PC). LD: 30 Sep., Rock Cut S.P. (BG); 22 Sep., Chi (m.ob.).

Tennessee Warbler

EA: 30 July (2), Chi (RH, JPu); 24 Aug., FWMA (RC), MC: 20,

Urbana, 23 Sep. (RC), LD: 28 Oct., Spfld (DB); 18 Oct., JP (PC).

Orange-crowned Warbler

EA: 3 Oct. (++), Chi area (m.ob.), MC: 7, Spfld, 16 Oct. (DB), LD: 7 Nov., Glencoe (EW); 7 Nov., JP (PC, KC). Documentation is requested for all records of this species prior to 20 Sep. due to similarity to Tennessee Warbler et al.

Nashville Warbler

EA: 24 Aug., JP (PC). MC: 10, Urbana, 30 Aug. (RC). LD: 30 Oct., Spfld (DB); 23 Oct., JP (PC).

Northern Parula

MC: 4, Spfld, 16 Sep. (DB). LD: 9 Oct., Charleston (BH); 29 Sep., Zion (PS); 29 Sep. (2), Wright Woods (Lake Co) (SH); 29 Sep., Evanston (EW).

Yellow Warbler

MC: 3, Spfld, 1 Aug. (DB); 3, JP, 17 Aug. (PC). LD: 16 Sep., Chi (DS); 8 Sep., Spfld (DB).

Chestnut-sided Warbler

EA: 26 Aug. (5), Urbana (RC); 26 Aug. (5), Spfld (DB). MC: 15, Carl.L, 20 Sep. (DK). LD: **8 Oct.**, Evanston (EW).

Magnolia Warbler

EA: 24 Aug. (2), JP (PC); 28 Aug., Spfld (DB). MC: 25, Urbana, 15 Sep. (RC); 17, JP, 30 Aug. (PC). LD: 17 Oct., Spfld (DB); 15 Oct., Chi (DS).

Cape May Warbler

EA: 30 Aug., Urbana (RC); 30 Aug. (2), JP (PC). MC: 12, Wilmette, 14 Sep. (RC, DI). LD: 16 Oct., JP (PC).

Black-throated Blue Warbler

EA: 28 Aug. (male), JP (PC); 8 Sep. (female), Urbana (RC). MC: 3, JP, 25 Sep. (PC); 3, Chi, 8 Sep. (CW); 3, M. Arb, 14 Sep. (m.ob.). LD: 17 Oct. (male), JP (PC); 20 Sep. (male), Carl.L (DK); 19 Sep., Spfld (DB).

Yellow-rumped Warbler

EA: 13 Sep., JP (KC); 20 Sep. (2), Spfld (DB). MC: 160, Thatcher Woods F.P. (Cook Co), 13 Oct. (DS); 85+, Spfld, 17 Oct. (DB). LD (north): 6 Nov., JP (KC).

Black-throated Green Warbler

EA: 30 Aug. (3), Urbana (RC); 30 Aug., Van Patten Woods F.P. (Lake Co) (PS). MC: 9, Spfld, 24 Sep. & 2 Oct. (DB); 7, JP, 25 Sep. (KC, PC), LD: 16 Nov. (banded), Sand Bluff Banding Station (Winnebago Co) (LJ).

Blackburnian Warbler

EA: 24 Aug. (imm.), Spfld (DB). MC: 12, Lodge Park F.P. (Piatt Co), 25 Aug. (RC). LD: 10 Oct., Evanston (EW).

Yellow-throated Warbler

LD: 16 Sep., Rochester (DB).

Pine Warbler

EA: 21 Sep., FWMA (RC). LD: 12 Oct., Urbana (RC); 6 Oct. (2), JP (PC).

KIRTLAND'S WARBLER

13-15 Sep., Chi (Montrose) (*RH, *WS, m.ob.-ph.). See seasonal highlights.

Prairie Warbler

EA: 30 Aug., Urbana (RC), LD: 10 Nov., Greene Co (*DB), Others: 14 Sep., Greene Co (DB).

Palm Warbler

EA: 7 Sep., Chi (DS); 10 Sep., Buffalo (Sangamon Co) (DB); 14 Sep., Carl.L (KM). MC: 100+, Clin.L, 5 Oct. (RC); 52, Chi, 14 Oct. (DS). LD: 31 Oct., Evanston (EW).

Bay-breasted Warbler

EA: 25 Aug. (2), Lodge Park F.P. (Piatt Co) (RC); 25 Aug., Spfld (DB); 28 Aug., JP (PC). MC: 16, Spfld, 16 Sep. (DB); 5, JP, 21 Sep. (KC). LD: 6 Oct., Carl.L (KM); 29 Sep., Zion (PS).

Blackpoll Warbler

EA: 27 Aug., JP (PC); 30 Aug. (2), Urbana (RC). MC: 34, Thatcher Woods F.P. (Cook Co), 14 Oct. (DS). LD: 20 Oct., JP (KC).

Cerulean Warbler

LD: 2 Oct. (female), Carlyle (DK). Others: 14 Sep., Greene Co (DB); 15 Sep., Urbana (RC et al.).

Black-and-white Warbler

EA: 23 Aug., JP (PC); 26 Aug., Urbana (RC); 26 Aug., Spfld (DB). MC: 9, Spfld, 5 Sep. (DB); 7, JP, 29 Sep. (PC). LD: 18 Oct., Urbana (RC); 9 Oct., JP (KC). Others: 14 July, Urbana (EC) - summer wanderer?

American Redstart

EA: 12 Aug. (imm.), Spfld (DB). MC: 50, Urbana, 30 Aug. (RC); 21, Chi, 11 Sep. (PC). LD: 17 Oct. (female), Spfld (DB); 13 Oct., Evanston (EW).

Prothonotary Warbler

LD: 8 Sep., Spfld (DB).

Worm-eating Warbler

LD: 14 Sep., Greene Co (DB).

Ovenbird

EA: 30 Aug., Urbana (RC); 2 Sep., JP (KC). MC: 10, Urbana, 22 Sep. (RC); 7, JP, 29 Sep. (PC). LD: 21 Nov. (present since 13 Nov.), Chi (Watertower Park) (CW); 11 Oct., Carlyle (DK); 10 Oct., Spfld (DB).

Northern Waterthrush

EA: 8 Aug., JP (PC); 30 Aug., Sang.L (DB); 3 Sep., Carl.L (KM). MC: 5, JP, 15 Sep. (PC). LD: 19 Oct., IBSP (PS).

Louisiana Waterthrush

LD: 15 Aug., Sang.L (DB). Documentation is requested for all northern IL reports in Sep. or beyond due to similarity to the pale Northern Waterthrush race.

Kentucky Warbler

LD: 8 Sep., Pomona (Jackson Co) (DMI).

Connecticut Warbler

EA: 5 Sep., Chi (JPu); 6 Sep., Chi (JPu) - a new one; 18 Sep., Spfld (DB). LD: 25 Sep. (ad. male), JP (PC).

Mourning Warbler

EA: 22 Aug., JP (PC); 26 Aug. (imm.), Spfld (DB). LD: 3 Oct., JP (PC); 8 Sep. (imm.), Spfld (DB).

Common Yellowthroat

MC: 11, Spfld, 4 Aug. (DB); 8, Carl.L, 30 Sep. (KM). MC: 5, JP, 29 Sep. (PC). LD: 30 Oct. (2), Sangamon Co (DB); 26 Oct., Chi (CA).

Hooded Warbler

LD: 9 Sep. (summering male—singing), Rock Cut S.P. (BG). Others: 25 Aug., Douglas-Hart Nature Ctr. (Coles Co) (BH).

Wilson's Warbler

EA: 24 Aug., JP (PC); 25 Aug. (females), Lodge Park F.P. (Piatt Co) & Spfld (RC); 25 Aug. (imm.) Spfld (DB). MC: 8, JP, 28 & 30 Aug. (PC); 4, Spfld, 3 Sep. (DB); 4, Wauk, 8 Sep. (PS). LD: 7 Oct (male), Sang.L (DB).

Canada Warbler

EA: 23 Aug., JP (PC); 25 Aug. (female), Lodge Park F.P. (Piatt Co) (RC); 25 Aug. (imm.), Spfld (DB). MC: 6, Chi, 29 Aug.

(CW); 4, Spfld, 26 Aug. (DB). LD: 29 Sep. (banded), Sand Bluff Banding Station (Winnebago Co) (LJ).

Yellow-breasted Chat

LD: 12 Aug., Sang.L (DB).

Summer Tanager

LD: 2 Oct. (window kill), Bushnell (McDonough Co) (LH); 30 Sep., Greene Co (DB); 30 Sep., Pomona (Jackson Co) (KM). Others: 22 Sep., **Chi (Montrose)** (D1).

Scarlet Tanager

EA: 16 Sep. (imm. male), JP (KC). MC: 3, Spfld, 21 & 24 Sep. (DB). LD: 3 Oct., Spfld (DB); 28 Sep., Palos (CT).

Northern Cardinal

MC: 28, Spfld, 3 Sep. (DB); 19, JP, 29 Aug. (PC).

Rose-breasted Grosbeak

EA: 7 Sep., Carl.L (KM). MC: 20, Urbana, 15 Sep. (RC). LD: 15 Oct., Spfld (DB).

Blue Grosbeak

MC: 4 (imm.), Clin.L, 15 Sep. (RC). LD: 24 Sep., Rochester (DB).

Indigo Bunting

MC: 27, Spfld, 4 Aug. (DB); 18, Carl.L, 3 Sep. (KM). LD: 23 Oct., Carlyle (DK); 21 Oct., Mechanicsburg (Sangamon Co) (DB); 29 Sep. (imm. or female), Chi (JPu).

PAINTED BUNTING

10 Oct. (imm. male), Chi (McCormick Place) (**DWi). 1st specimen, 2d Illinois record. See seasonal highlights.

Dickcissel

MC: 13, Spfld, 1 Aug. (DB). LD: 22 Nov. - 3 Dec., O'Fallon (*KM).

Eastern Towhee

EA: 4 Oct. (male), JP (KC). MC: 20, Clin.L & Weldon Springs S.P., 20 Oct. (RC, GL). LD: 22 Nov., Carl.L (DK).

Spotted Towhee

EA: 24 Oct., Chi (Bird Sanctuary) (*RH).

American Tree Sparrow

EA: 19 Oct., IBSP (PS); 19 Oct., Chi (JPu); 20 Oct., Spfld (DB). MC: 28, Spfld, 30 Nov. (DB).

Chipping Sparrow

EA: 12 Sep. (2), Evanston (EW). MC: 70, Spfld, 27 Oct. (DB); 34, M.Arb, 20 Sep (EW). LD: 15 Nov., Spfld (DB); 13 Nov., Table Grove (Fulton Co) (KM); 29 Oct. (ad.), JP (PC).

Clay-colored Sparrow

EA: 9 Sep., Chi (DS). LD: 18 Oct., Urbana (RC); 13 Oct., Chi (JPu); 9 Oct. (2), Chi (m.ob.). Others (downstate): 8 Oct., Spfld (DB).

BREWER'S SPARROW

27 Nov. & into Dec., Chi (Bird Sanctuary) (Lmu,*RH,*m.ob.). See future seasonal highlights, Vol. 6 No. 3 for account on this bird which remained through winter and even began singing in spring.

Field Sparrow

EA: 12 Oct., JP (KC). MC: 150+, Clin.L & Weldon Springs S.P., 20 Oct. (RC, GL). LD: 23 Nov., Spfld (DB); 21 Nov., Chi (DS).

Vesper Sparrow

EA: 23 Sep., IBSP (EW, IM, E). MC: 3, Spfld, 15 Sep. & 4 & 20 Oct. (DB). LD: 10 Nov., Pike Co (DB).

Lark Sparrow

LD: 10 Oct., Chi (DS).

Savannah Sparrow

EA: 7 Aug., Carl.L (KM). MC: 76, Greene Co, 26 Oct. (DB). LD: 8 Dec., Chi (AS).

Grasshopper Sparrow

MC: 4, Spfld, 4 Aug. (DB). LD: 9 Nov. (banded), Sand Bluff Banding Station (Winnebago Co) (LJ).

Henslow's Sparrow

EA: 18 Sep., Chi (CW); 28 Sep., Colfax (McLean Co) (MR).

Le Conte's Sparrow

EA: 18 Sep., Chi (DS); 3 Oct., Urbana (RC). MC: 2, Fermi, 13-20 Oct. (m.ob.). LD: 29 Oct. (ad.), Carlyle (DK); 12 Oct., Chi (JPu).



"Oregon" Slate-colored Junco, New City, IL, Sangamon Co. 23 Nov. 1996. Photo by Dennis Oehmke.

Nelson's Sharp-tailed Sparrow

EA: 8 Sep., Chi (RH,JPu); 12 Sep., Chi (RH); 22 Sep., Carlyle (KM); 25 Sep., RLCA (KR,LA,RC). MC: 2, M.Arb area, 29 Sep. (m.ob.). LD: 28 Oct. (4), Carl.L (DK); 19 Oct., IBSP (PS).

Fox Sparrow

EA: 25 Sep., JP (PC); 14 Oct., Spfld (DB). MC: 10, Spfld, 25 Oct. (DB). LD: 3 Dec., Woodstock (RBa).

Song Sparrow

EA: 29 Sep., Chi (JPu). MC: 63, Spfld, 21 Oct. (DB). Into Dec.

Lincoln's Sparrow

EA: 30 Aug., Urbana (RC); 14 Sep., Chi (JPu). MC: 18, Chi, 9 Oct. (DS); 7, Spfld, 21 Oct. (DB). LD: 15 Nov., Spfld (DB); 8 Nov., Chi (DS).

Swamp Sparrow

EA: 15 Sep. (2), Spfld (DB); 19 Sep., Chi (JPu). MC: 27, Spfld, 21 Oct. (DB). LD: 10 Nov., Chi (JPu).

White-throated Sparrow

EA: 14 Sep. (4), Chi (RC); 15 Sep., Urbana (RC). MC: 450+, Chi, 12 Oct. (CA); 144, Spfld, 28 Oct. (DB).

White-crowned Sparrow

EA: 11 Sep., Chi (DM); 24 Sep., Rochester (DB). MC: 33, Spfld, 21 Oct. (DB); 27, JP, 9 Oct. (PC,KC).

Harris' Sparrow

EA: 9 Oct., Bushnell (McDonough Co) (LH). LD: 30 Oct. (imm.), Carlyle (DK); 29-30 Oct., Chi (AW); 26 Oct., Colfax (McLean Co) (MR); 26 Oct., Clin.L (MD).

Dark-eyed Junco

EA: 13 Sep., IBSP (EW); 3 Oct. (3), Spfld (DB). MC: 740, JP, 28 Oct. (KC); 150, Carlyle, 22 Nov. (DK); 135, Spfld, 28 Oct. (DB). Others (Oregon race): 1 Oct., Spfld (MD), (Oregon race) (1) Sangamon Co, 23 Nov. (DO).

Lapland Longspur

EA: 13 Sep. IBSP (EW). MC: 3,000, Bond Co, 19 Nov. (DK); 2,800, Kendall Co, 10 Nov. (CMC,JMc); 2,000+, Kemp (Douglas Co), 10 Nov. (RC).

Snow Bunting

EA: 25 Oct., Chi (CF); 8 Nov. (3), Carl.L (DK). MC: 51, LCNP, 17 Nov. (CMC,JMc).

Bobolink

EA: 21 Aug., JP (PC, KC); 25 Aug., Sang.L (DB). MC: 20, Deer Creek E. F.P., 24 Aug. (JMI); 12, Sang.L, 25 Sep. (DB). LD: 10 Oct., Carl.L (DK). Others: 15, IBSP, 23 Sep. (EW,IM,JE).

Red-winged Blackbird

EA: 30 Sep. (male), JP (PC). MC: 3,000, Spfld, 20 Oct. (DB).

Eastern Meadowlark

EA: 14 Oct., JP (KC). MC: 40, E. Grundy Co, 27 Sep. (JM); 30, Spfld, 27 Oct. (DB); 15, Carl.L, 19 Oct. (KM). LD (north): 18 Nov., Chi (JPu).

Western Meadowlark

LD: 24 Nov. (LD), Greene Co (DB).

Yellow-headed Blackbird

EA: 3 Aug. (imm. male), Sang.L (DB).

Rusty Blackbird

EA: 19 Sep. (2), Skokie Lagoons F.P. (EW et al.); 23 Sep., Shirland (Winnebago Co) (BG). MC: 50, Spfld, 19 Nov. (DB). Into Dec.

Brewer's Blackbird

EA: 19 Oct. (2 females), Bond Co (DB et al.); 22 Oct. (male, 4 females), Sang.L (DB). MC: 10, Bond Co, 20 Nov. (DK); 10, Pike Co, 20 Nov. (DB). LD: 23 Nov. (2 males), Shirland (BG). Others: 26 Oct. (male), Spfld (DB).

Common Grackle

EA: 19 Sep. (29), JP (PC). MC: 500,000, St. Clair Co, 21 Nov. (DK).

Brown-headed Cowbird

MC: 1,000+, HLCA, 21 Sep. (JZ); 250, Spfld, 2 Sep. (DB). LD: 30 Nov. (DB), Sang.L (DB).

Orchard Oriole

EA: 5 Aug. (female & imm. male), JP (PC). MC: 4, FWMA, 30 Aug. (RC). LD: 31 Aug., L.Chau (RC).

Baltimore Oriole

MC: 11, Spfld, 16 Aug. (DB). LD: 19 Sep., Douglas-Hart Nature Ctr. (Coles Co) (BH); 15 Sep., Winnetka (EW).

Purple Finch

EA: 22 Sep., Greene Co (DB). MC: 14, Weldon Springs S.P., 20 Oct (RC, GL); 4, Wilmette, 18 Oct. (JE). LD: 16 Nov. (2 male), Woodstock (RBa).

House Finch

MC: 1,500, HLCA, mid-Oct. (JZ).

Red Crossbill

EA: 23 Oct. (2), Clin.L (RC). MC: 60, IBSP, 2 Nov. (AS); 21, Wilmette, 31 Oct. (JKo,EW). Others: 1 Nov., Evanston (EW). Others (early wanderers): 18 Aug. (3), Skokie (EW); 29 Aug (fem/imm.), Chi (Montrose) (RH et al.); 25 Sep. (4), SRSF (LA, KR)

White-winged Crossbill

EA: 23 Oct. (2 males), Ryder's Woods F.P. (McHenry Co) (RBa).

Common Redpoll

EA: 9-10 Nov. (2), Chi (JPu,AS).

Pine Siskin

EA: 6 Oct., CBG (JE); 11 Oct., Urbana (RC). Others: 29 Oct., Sang.L.(DB); 1 Nov., Carl.L.(DK); 2 Nov., Ottawa (CMc,IMc); 10 Nov., Table Grove (Fulton Co) (KM). Very scarce this fall.

American Goldfinch

EA: 23 Sep. (24), IBSP (EW,IM,JE). MC: 500, HLCA, mid-Oct. (JZ): 200, Spfld, 29 Oct. (DB); 100, Carl.L, 19 Oct. (KM et al.); 91, JP, 27 Oct (KC,PC). LD: 7 Nov. (12), Glencoe (EW).

Evening Grosbeak

Others (early wanderers): 15 Aug. (male), Waterfall Glen F.P. (DuPage Co) (*RFi); 17 Aug. (3), West Chicago (MS) - at a feeder.

Eurasian Tree Sparrow

MC: 150, L.Chau, 31 Aug. (RC); 50, Henderson Co, 9 Nov. (DJ).

House Sparrow

MC: 310 (at feeder), near Homer in Vermilion Co, 27 Nov. (JS); 308, JP, 17 Sep. (PC).

Exotics & Releases:

Trumpeter Swan

17 & 18 Nov. (ad., green neck band), Durand (Winnebago Co) (BG).

Monk Parakeet

MC: 54, JP, 18 Sep. (PC). Others: 20 Aug. (12—2 colony nests), Berwyn (RBe).

Budgerigar

27 Nov.-into Dec., Chi (EW, m.ob.).

Ringed Turtle-Dove

31 Aug., Carl.L. (DK-photo); 1 Aug.-30 Nov. Brookfield (RRe,NB).

The Illinois Ornithological Society gratefully acknowledges the following members for their generous donations and support.

Supporters (\$100 - \$500)

Mrs. Clayton H. Banzhaf • Denis M. Bohm • Decatur Audubon Society
Dinah Dyer & Herb Wisch • Parker Hall • David B. Johnson • R. David Johnson
Steven Mlodinow • Wilbur & Baiba Rosenkranz • Paul F. Sullivan & Marsha Dittmer
Lynne N. Tamura • David Willard • Anonymous

Contributors (\$50 - \$99)

Mr. & Mrs. Rex J. Bates • David Brenner • Florence Burek • Elizabeth L. Chato • Paul R. Clyne
Evanston North Shore Bird Club • Mrs. Erica Friederici • J. Patrick Graham
Philip Haebler/The Upstart Crow • Mary Ann Harrison • Craig Jobson • R. Laegeler
Marjorie Lundy & Family • Martha Marks • Alex and Marilyn Meloy • Kristin & Roger Miller
P. Clifford Miller • Kay Morgan • North Central Illinois Ornithological Society
Sebastian T. Patti • Karen Rodemaker • Harriet W. Rylaarsdam
Roger and Dana Rzepka • Mark Seiffert • Joe Suchecki • John & Caryl Sweeney
Robert Whelan Family • Jack & Betty Wier • Wildlife Rescue and Rehabilitation
The World Cafe/Vernon and Linda La Via

Springhouse begins where the travel brochures leave off.

Read about the real Southern Illinois: History, folklore, humor, recipes, and letters—always plenty of letters.
One-year subscription (6 issues) \$15.00

Springhouse
P.O. Box 61 • Herod, IL 62947
Tel. No. (618) 252-3341

**BINOCULARS REPAIRED
CUSTOM SALES**

The right binocular at the right price

Herb Koehler - Owner
Binocular Technician 44 years
Estimates: No Cost or Obligation



TELE-OPTICS
5514 Lawrence Avenue
Chicago, IL 60630
(312) 283-7757

SUBMISSION INFORMATION

✔ We welcome manuscripts, photographs, and illustrations for possible publication in *Meadowlark*.

✔ Article topics include unusual bird sightings and nesting accounts, technical papers on bird research, and other articles such as bird finding guides and field identification tips. Joy of birding articles will be considered.

✔ Manuscripts should be typewritten or computer-generated, double spaced and on only one side of numbered pages. Please send two copies of your manuscript and make sure you keep another for yourself.

✔ If you are able, submit a computer disc in ascii file or for Word Perfect 5.1.

✔ We prefer clear black and white or color print photographs. Color slides may also be acceptable.

✔ Include name, address, and day and night time phone numbers. Other pertinent information about your qualifications and background is also helpful.

✔ We reserve the right to review and edit articles according to style, grammar, accuracy, and read ability.

✎ Send articles, photographs, and inquiries to:

Sheryl De Vore, Chief Editor
967 Braeburn, Mundelein, IL 60060.

✎ Pen and ink drawings are also accepted.

Contact:

Denis Kania, 1536 Preston Road
Naperville, IL 60563.

SEND SEASONAL REPORTS TO:

Fall Migration - Due 7 December
(1 August - 30 November)

• Robert Chapel

306 1/2 West California, Urbana, IL 61801

Winter Season - Due 7 March

(1 December - 28 February)

• Robert Danley

2201 Clay Street, Murphysboro, IL 62966

Spring Migration - Due 7 June

(1 March - 31 May)

• Paul R. Clyne

5538 S. Blackstone Ave., Chicago, IL 60637

Breeding Season - Due 7 August

(1 June - 31 July)

• Vernon Kleen

Illinois Department of Conservation

Natural Heritage Division

524 S. Second St., Springfield, IL 62701

SUBSCRIPTION INFORMATION

Members of the Illinois Ornithological Society receive *Meadowlark*, the quarterly journal, plus *Wings Over The Prairie*, the IOS newsletter. Members are also invited to special field trips, the annual meeting, and other IOS functions.

To join or send a gift subscription, send your name or that of the gift recipient, address, and telephone number along with fee to:

IOS: P.O. Box 1971
Evanston, IL 60204-1971.

Fees: Individual \$20; Family \$30;
Full-time student \$10; Contributor \$50 - \$99;
Supporter \$100 - \$499; Sponsor \$500.

Back issues of Volume 2, 3, 4, and 5 are still available for \$5 each. Some back issues of Volume 1 are also available at \$6 each.

NATURE'S CORNER • 847-369-3636

WILD BIRD PRODUCTS

Almost 100 kinds of BIRD FEEDERS • More than 40 kinds of WILDLIFE FOOD
Birdbaths, heaters, poles, houses, books, fieldguides, bins, scopes, packs and more

NATURE'S GIFTS

Art and limited edition prints, porcelains, musicals, mugs, tee and sweat shirts, stone critters,
gardening
and nature books, toys, puppets, puzzles, minerals, wind chimes, jewelry, cards, calendars,
audio and video tapes.

WATER GARDENING SUPPLIES

Pond kits, liners, pumps, filters, fountains, water test kits and pond care products.
10-8 WEEKDAYS, 10-6 SAT., 1-5 SUN. • 566 S. Rt. 59 NAPERVILLE, IL

ACROSS FROM THE FOX VALLEY MALL NEAR VENTURE



RAREST OF THE RARE

*Federally endangered Kirtland's Warbler; immature male,
Montrose Magic Hedge, Chicago. 15 Sept. 1996.*

Photo by Eric Walters.